

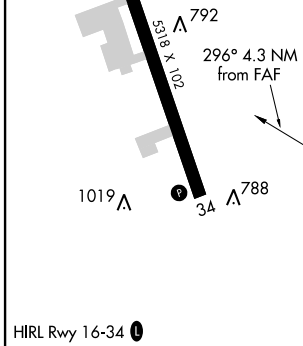
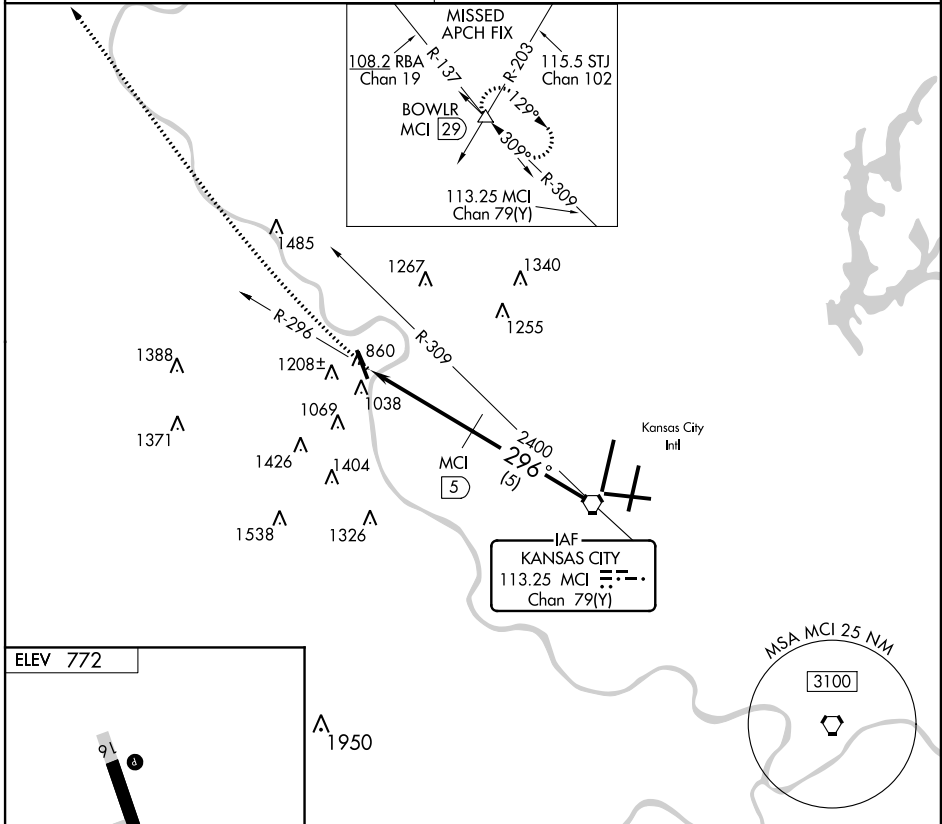
VOR/DME-A  
SHERMAN AAF (F'L V)

VORTAC MCI <b>113.25</b> Chan <b>79 (Y)</b>	APP CRS <b>296°</b>	Rwy Idg TDZE Apt Elev	<b>N/A</b> <b>N/A</b> <b>772</b>
---	------------------------	-----------------------------	--

**NA** Use Kansas City Intl altimeter setting. Circling NA West of Rwy 16-34

**MISSED APPROACH:** Climbing right turn to 3000 via heading 340° and MCI R-309 to BOWLR Int and hold.

KANSAS CITY APP CON <b>124.7 318.1</b>	CTAF <b>126.20*</b>
---	------------------------



3000	MCI R-309	BOWLR	VORTAC
hdg 340°		△	
MCI 9.3	MCI 5	2400	4000
4.3 NM	5 NM	296°	Procedure Turn NA
KANSAS CITY INTL ALTIMETER SETTING MINIMUMS			
CATEGORY	A	B	C
CIRCLING	1440-1	668 (700-1)	1440-1¾ 668 (700-1¾)
			1500-2¼ 728 (800-2¼)

NC-2, 07 FEB 2013 to 07 MAR 2013

NC-2, 07 FEB 2013 to 07 MAR 2013