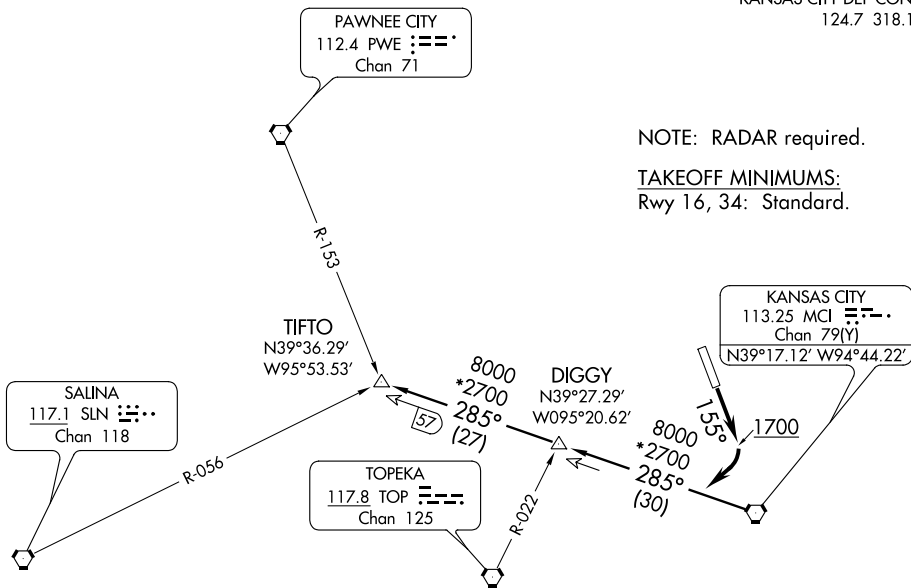


KANSAS CITY DEP CON  
124.7 318.1

NOTE: RADAR required.

TAKEOFF MINIMUMS:  
Rwy 16, 34: Standard.



NC-2, 07 FEB 2013 to 07 MAR 2013

NC-2, 07 FEB 2013 to 07 MAR 2013

TAKEOFF OBSTACLE NOTES:

- Rwy 16: Road 79' from DER, across departure course, up to 15' AGL/779' MSL.  
Building 400' from DER, 580' left of centerline, 28' AGL/788' MSL.  
Pumphouse 444' from DER, 564' left of centerline, 23' AGL/783' MSL.  
Boats 1063' from DER, across departure course, up to 45' AGL/800' MSL.  
Trees 2165' from DER, across departure course, up to 75' AGL/838' MSL.
- Rwy 34: Multiple trees and poles beginning 117' from DER on centerline, up to 100' AGL/879' MSL.  
Levee 187' from DER on centerline, 35' AGL/782' MSL.

NOTE: Chart not to scale



### DEPARTURE ROUTE DESCRIPTION

TAKEOFF RUNWAY 16: Climb heading 155° to 1700 before turning southwest, thence . . .  
. . . fly assigned heading and altitude for vector to appropriate route. Expect filed altitude 10 minutes after departure.

TAKEOFF ALL OTHER RUNWAYS: Fly assigned heading and altitude for vector to appropriate route. Expect filed altitude 10 minutes after departure.

TIFTO TRANSITION (TIFTO3.TIFTO): From over MCI VORTAC via MCI R-285 to TIFTO INT.