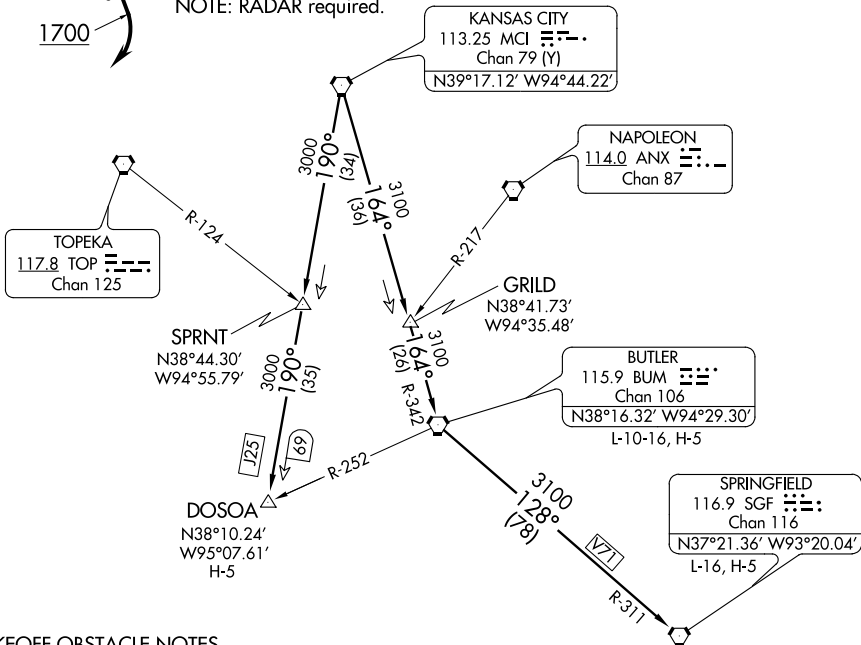


TAKEOFF MINIMUMS

Rwy 16, 34: Standard.

NOTE: RADAR required.

KANSAS CITY DEP CON
123.95 318.1 (BUTLER/SPRINGFIELD TRANSITION)
124.7 284.7 (DOSOA TRANSITION)



TAKEOFF OBSTACLE NOTES

Rwy 16: Road 79' from DER, across departure course, up to 15' AGL/779' MSL. Building 400' from DER, 580' left of centerline, 28' AGL/788' MSL. Pumphouse 444' from DER, 564' left of centerline, 23' AGL/783' MSL. Boats 1063' from DER, across departure course, up to 45' AGL/800' MSL. Trees 2165' from DER, across departure course, up to 75' AGL/838' MSL.

Rwy 34: Multiple trees and poles beginning 117' from DER on centerline, up to 100' AGL/879' MSL. Levee 187' from DER on centerline, 35' AGL/782' MSL.

NOTE: Chart not to scale.

DEPARTURE ROUTE DESCRIPTION

TAKEOFF RUNWAY 16: Climb heading 155° to 1700 before turning southwest, thence . . .

. . . fly assigned heading and altitude for vector to appropriate route. Expect filed altitude 10 minutes after departure.

TAKEOFF ALL OTHER RUNWAYS: Fly assigned heading and altitude for vector to appropriate route. Expect filed altitude 10 minutes after departure.

BUTLER TRANSITION (RACER4.BUM): From over MCI VORTAC on MCI R-164 and BUM R-342 to BUM VORTAC.

DOSOA TRANSITION (RACER4.DOSOA): From over MCI VORTAC on MCI R-190 to DOSOA INT.

SPRINGFIELD TRANSITION (RACER4.SGF): From over MCI VORTAC on MCI R-164 and BUM R-342 to BUM VORTAC, then on BUM R-128 and SGF R-311 to SGF VORTAC.