

# RNAV (GPS) RWY 34

FORT LEAVENWORTH/SHERMAN AAF (FLV)

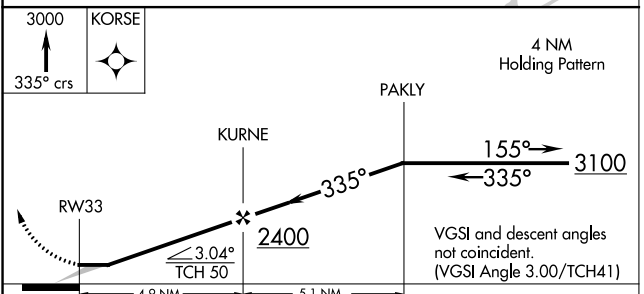
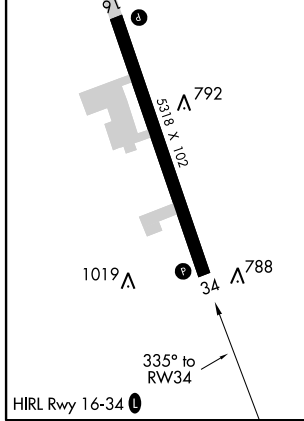
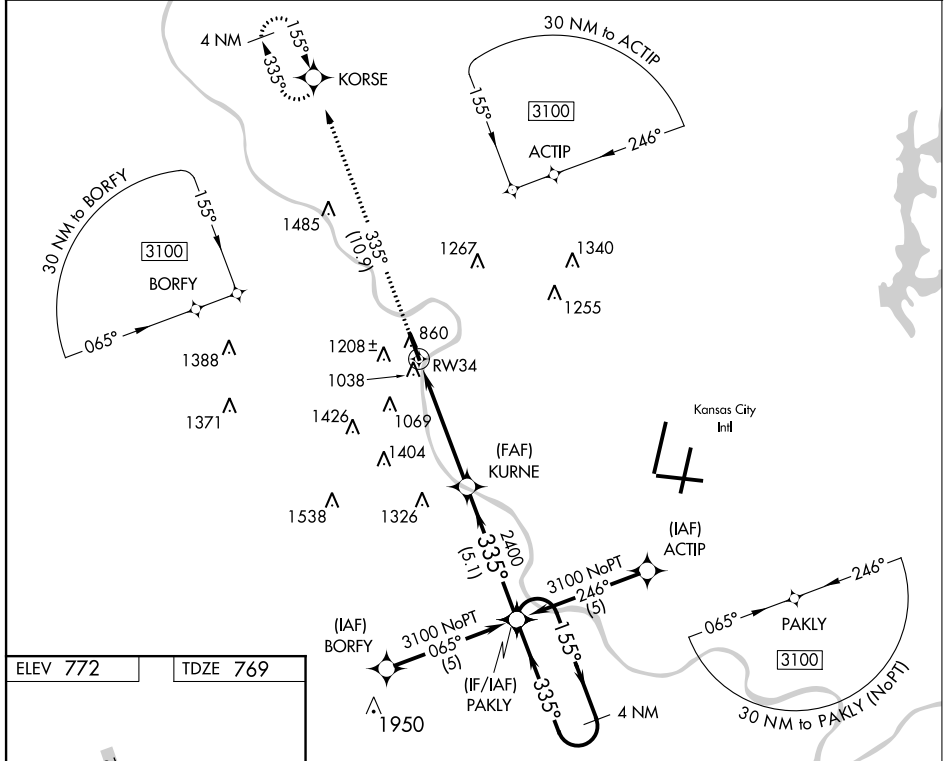
APP CRS <b>335°</b>	Rwy Idg <b>5318</b> TDZE <b>769</b> Apt Elev <b>772</b>
------------------------	---

**NA** DME/DME RNP-0.3 NA. Use Kansas City Intl altimeter setting. Circling not authorized west of Rwy 16-34.

MISSED APPROACH: Climb to 3000 via 335° course to KORSE WP and hold.

KANSAS CITY APP CON  
**124.7 318.1**

CTAF  
**126.2 0\***



CATEGORY	A	B	C	D
LNAV MDA	1560-1 791 (800-1)	1560-1¼ 791 (800-1¼)	1560-2¼ 791 (800-2¼)	NA
CIRCLING	1560-1 788 (800-1)	1560-1¼ 788 (800-1¼)	1560-2¼ 788 (800-2¼)	NA

# RNAV (GPS) RWY 34

NC-2, 07 FEB 2013 to 07 MAR 2013

NC-2, 07 FEB 2013 to 07 MAR 2013