

RNAV (GPS) RWY 16

FORT LEAVENWORTH/SHERMAN AAF (FLV)

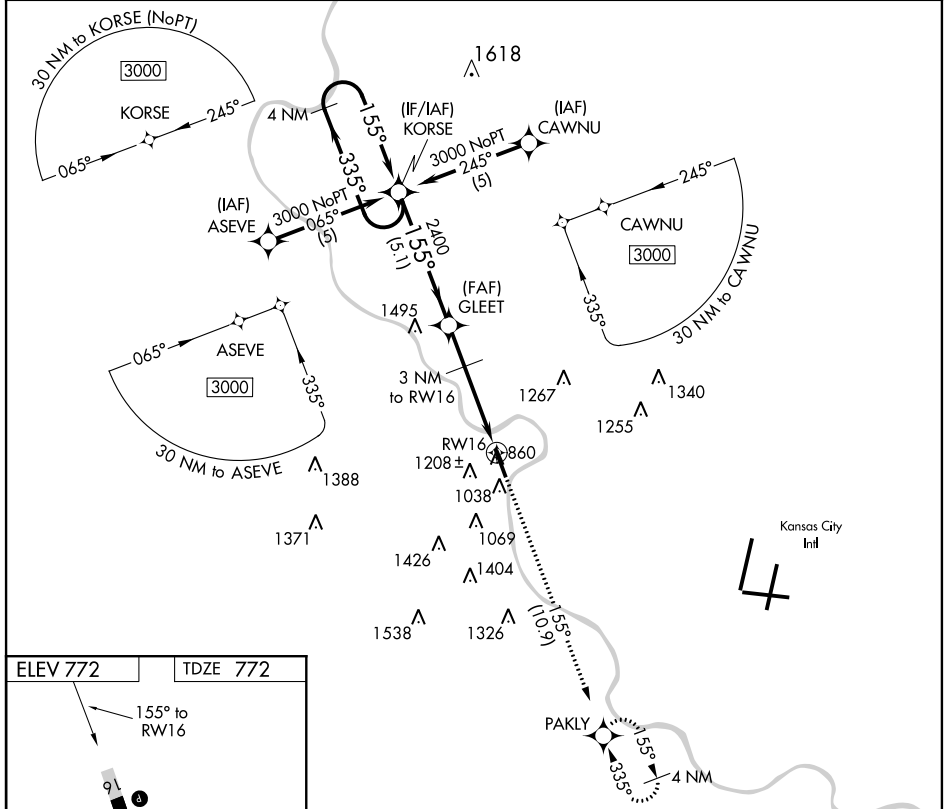
APP CRS 155°	Rwy Idg 5318
	TDZE 772
	Apt Elev 772

NA DME/DME RNP-0.3 NA. Use Kansas City Intl altimeter setting. Circling not authorized west of Rwy 16-34.

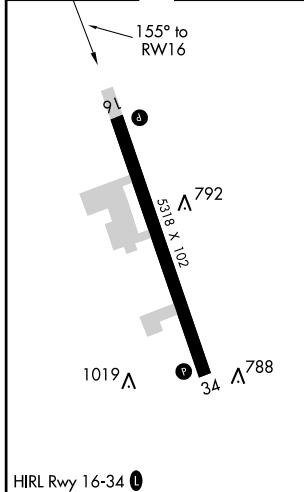
MISSED APPROACH: Climb to 3100 via 155° course to PAKLY WP and hold.

KANSAS CITY APP CON
124.7 318.1

CTAF
126.20*



ELEV 772 TDZE 772



FORT LEAVENWORTH, KANSAS
Orig-A 12320

	4 NM Holding Pattern	KORSE	GLEET	3100	PAKLY
	3000	335°	155°	3.04° TCH 50	155° crs
			2400	3 NM to RW15	
			1780		
		5.1 NM	1.9 NM	3 NM	
CATEGORY	A	B	C	D	
LNAV MDA	1520-1 748 (800-1)	1520-1¼ 748 (800-1¼)	1520-2¼ 748 (800-2¼)	NA	
CIRCLING	1520-1 748 (800-1)	1520-1¼ 748 (800-1¼)	1520-2¼ 748 (800-2¼)	NA	

FORT LEAVENWORTH, KANSAS
Orig-A 12320

FORT LEAVENWORTH/SHERMAN AAF (FLV)

39°22'N-94°55'W

RNAV (GPS) RWY 16

NC-2, 07 FEB 2013 to 07 MAR 2013

NC-2, 07 FEB 2013 to 07 MAR 2013