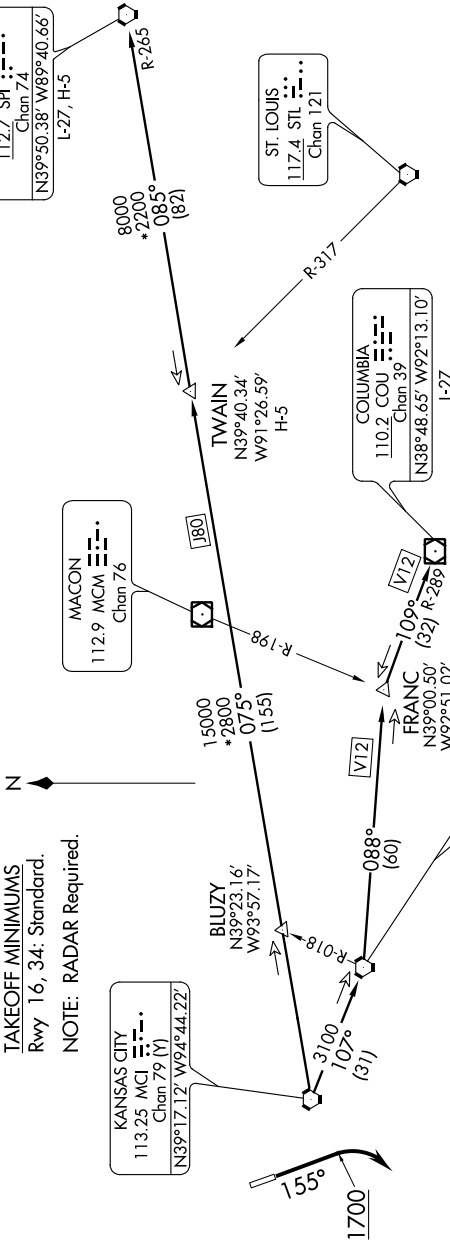


NC-2, 07 FEB 2013 to 07 MAR 2013

KANSAS CITY DEP CON  
124.7 318.1

**TAKEOFF MINIMUMS**  
Rwy 16, 34: Standard.  
**NOTE: RADAR Required.**



**DEPARTURE ROUTE DESCRIPTION**

**TAKEOFF RWY 16:** Climb heading 155° to 1700 before turning southwest, thence . . .

. . . Fly assigned heading and altitude for vector to appropriate route. Expect filed altitude 10 minutes after departure.

**TAKEOFF ALL OTHER RUNWAYS:** Fly assigned heading and altitude for vector to appropriate route. Expect filed altitude 10 minutes after departure.

**COLUMBIA TRANSITION (LAKES7.COU):** From over MCI VORTAC on MCI R-107 to ANX VORTAC, then on ANX R-088 to FRANC INT, then on COU R-289 to COU VOR/DME.

**SPINNER TRANSITION (LAKES7.SPI):** From over MCI VORTAC on R-075 and SPI R-265 to TWAIN INT, then on SPI R-265 to SPI VORTAC. **TWAIN TRANSITION (LAKES7.TWAIN):** From over MCI VORTAC on MCI R-075 and SPI R-265 to TWAIN INT.

NOTE: Chart not to scale.

**TAKEOFF OBSTACLE NOTES**

**Rwy 16:** Road 79' from DER, across departure course, up to 15' AGL/779' MSL. Building 400' from DER, 580' left of centerline, 28' AGL/788' MSL. Pumphouse 444' from DER, 564' left of centerline, 23' AGL/783' MSL. Boats 1063' from DER, across departure course, up to 45' AGL/800' MSL. Trees 2165' from DER, across departure course, up to 75' AGL/838' MSL.

**Rwy 34:** Multiple trees and poles beginning 117' from DER, on centerline, up to 100' AGL/879' MSL. Levee 187' from DER on centerline, 35' AGL/782' MSL.

NC-2, 07 FEB 2013 to 07 MAR 2013