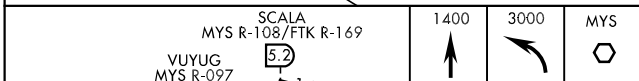
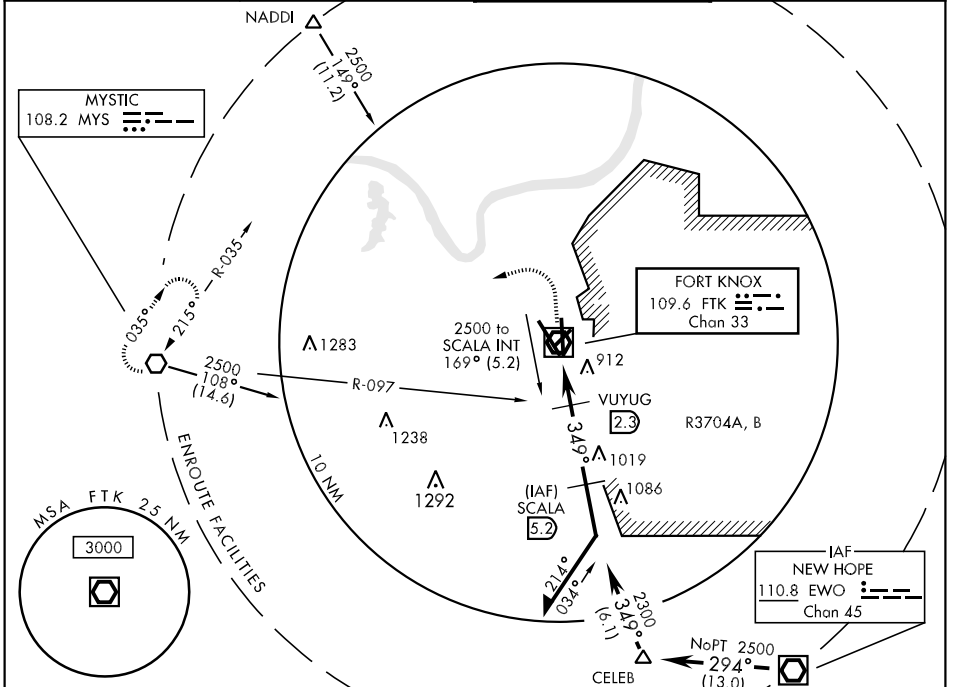


VOR/DME FTK 109.6 Chan 33	APCH CRS 349°	Rwy Idg TDZE 5185 741 Arpt Elev 755	AL-151 [USA]	GODMAN AAF (KFTK)
---	-------------------------	--	--------------	-------------------

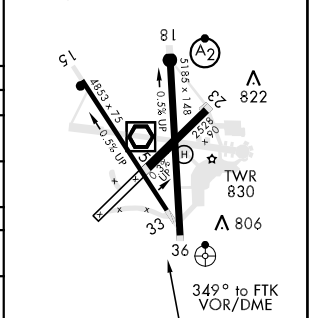
<p>▼ * For inoperative ODALS, increase S-36 visibility CAT D ¼ mile. ** Circling not authorized E of Rwy 18-36. Visibility reduction by helicopters NA.</p>	<p>ODALS</p>	<p>MISSED APPROACH: Climb to 1400, then climbing left turn to 3000 direct MYS VOR and hold.</p>
---	--------------	---

<p>ATIS★ 109.6</p>	<p>LOUISVILLE APP CON 123.675 327.0</p>	<p>GODMAN TOWER★ 133.35 233.7</p>	<p>GND CON 121.9 239.3</p>
-------------------------------	--	--	---------------------------------------



ELEV 755	TDZE 741
<p>HIRL Rwy 18-36 MIRL Rwy 15-33 REIL Rwy 15, 18</p>	

CATEGORY	A	B	C	D
S-36*	1280-¾	539 (600-¾)	1280-1½	1280-1¾
CIRCLING**	1300-1	1300-1	1300-1½	1320-2
VUYUG MINIMA (DUAL VOR RECEIVERS OR DME REQUIRED)				
S-36*	1180-¾	439 (500-¾)	1180-1½	1180-1½
CIRCLING**	1300-1	545 (600-1)	1300-1½	1320-2



SE-1, 07 FEB 2013 to 07 MAR 2013

SE-1, 07 FEB 2013 to 07 MAR 2013