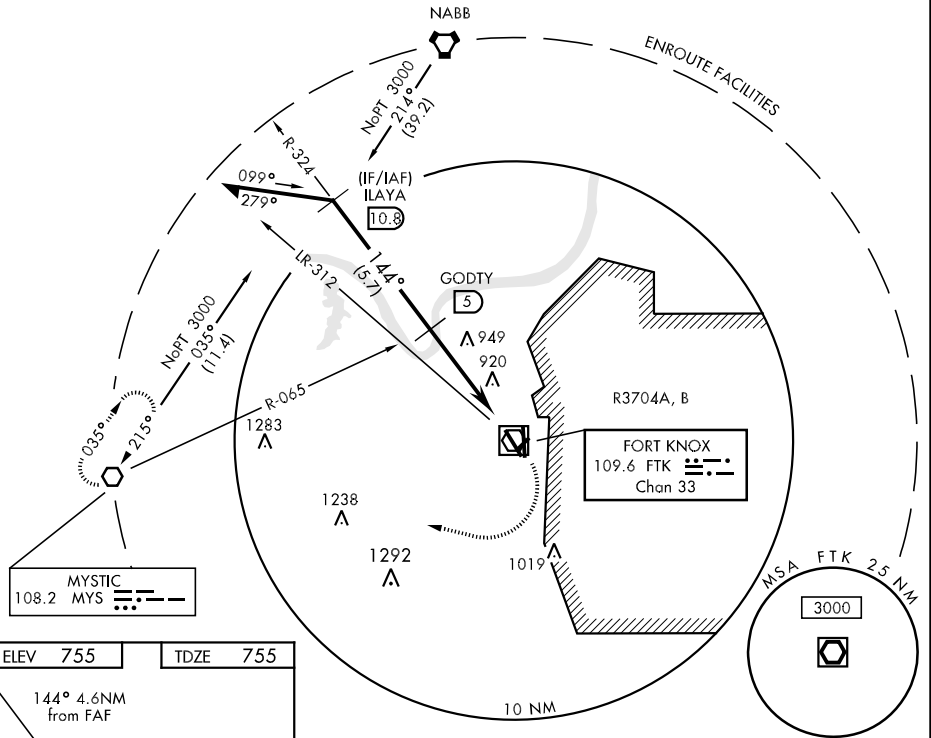


VOR/DME FTK <b>109.6</b> Chan <b>33</b>	APCH CRS <b>144°</b>	Rwy Idg TDZE <b>4853</b> <b>755</b> Arpt Elev <b>755</b>	AL-151 [USA]	GODMAN AAF (KFTK)
---	-------------------------	---	--------------	-------------------

▼ \* Circling not authorized E of Rwy 18-36. MISSED APPROACH: Climb to 1400, then climbing right turn to 3000 direct MYS VOR and hold.

ATIS★ <b>109.6</b>	LOUISVILLE APP CON <b>123.675 327.0</b>	GODMAN TOWER★ <b>133.35 233.7</b>	GND CON <b>121.9 239.3</b>
-----------------------	--	--------------------------------------	-------------------------------

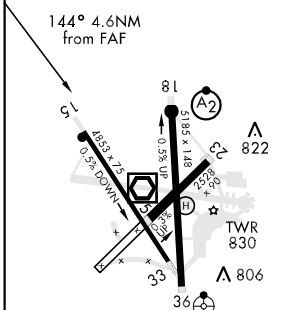
CAUTION: Configure for final approach prior to intercepting FTK R-324.



SE-1, 07 FEB 2013 to 07 MAR 2013

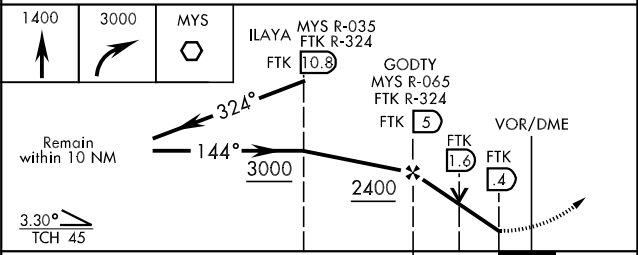
SE-1, 07 FEB 2013 to 07 MAR 2013

ELEV 755	TDZE 755
----------	----------



HIRL Rwy 18-36  
MIRL Rwy 15-33  
REIL Rwy 15, 18

FAF to MAP 4.6 NM					
Knots	60	90	120	150	180
Min:Sec	4:36	3:04	2:18	1:50	1:32



CATEGORY	A	B	C	D
S-15	1200-1 445 (500-1)	1200-1¼ 445 (500-1¼)	1200-1½ 445 (500-1½)	1200-1½ 445 (500-1½)
CIRCLING *	1300-1 545 (600-1)	1300-1½ 545 (600-1½)	1320-2 565 (600-2)	