

VORTAC GXU <b>110.6</b> Chan <b>43</b>	APCH CRS <b>043°</b>	Rwy ldg <b>10,014</b> THRE <b>131</b> Arpt Elev <b>131</b>
--	-------------------------	--

AL-150 [USAF]

(JOINT BASE MC GUIRE DIX LAKEHURST) (KWRI)

MC GUIRE FLD,

▼ \* When ALS inop, increase CAT AB RVR to 55 and vis to 1 mile, CAT CDE vis to 1½ miles.  
\*\* Circling not authorized E of field.

ALSF-2

MISSED APPROACH: Climb to 2000 via GXU VORTAC R-060 to 14 DME (CUGON). Expect further clearance from ATC.

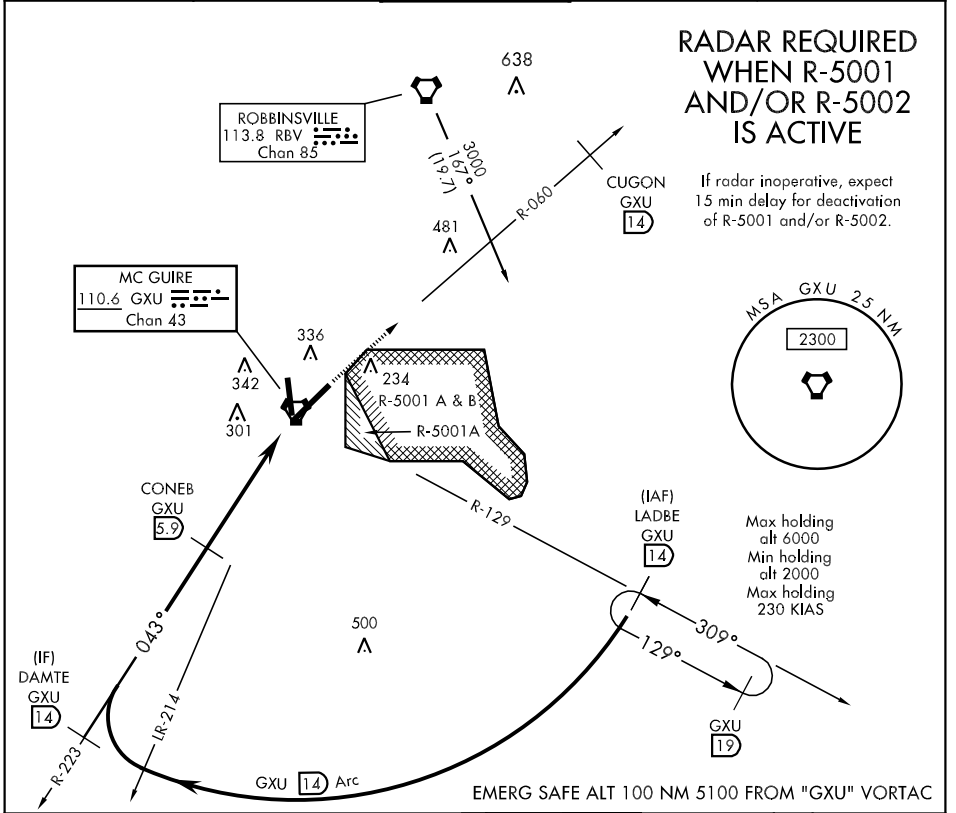
ATIS <b>110.6 270.1</b>	MC GUIRE APP CON <b>124.15 363.8</b>	MC GUIRE TOWER <b>118.65 255.6</b>	GND CON <b>121.8 275.8</b>	CLNC DEL <b>135.2 335.8</b>
----------------------------	---	---------------------------------------	-------------------------------	--------------------------------

**RADAR REQUIRED WHEN R-5001 AND/OR R-5002 IS ACTIVE**

If radar inoperative, expect 15 min delay for deactivation of R-5001 and/or R-5002.

NE-2, 07 FEB 2013 to 07 MAR 2013

NE-2, 07 FEB 2013 to 07 MAR 2013



EMERG SAFE ALT 100 NM 5100 FROM "GXU" VORTAC

LADBE GXU R-129 14	DAMTE GXU R-223 14	CONEB GXU 5.9	2000	2000	2000	043°	VORTAC	2000 GXU R-060 14	CUGON GXU 14	ELEV 131	THRE 131	
							1.6	BEMGE 1	3.01° TCH 76			
							4.9 NM	7 NM				
CATEGORY	A	B	C	D	E							
S-6*	620/40	489 (500-¾)	620/50	489	(500-1)							
CIRCLING**	660-1	529 (600-1)	680-1½ 549 (600-1½)	700-2 569 (600-2)	1200-3 1069 (1100-3)							

