

WRIGHTSTOWN, NEW JERSEY

# VOR/DME or TACAN RWY 36

MC GUIRE FLD,

VORTAC GXU <b>110.6</b> Chan <b>43</b>	APCH CRS <b>020°</b>	Rwy Idg THRE <b>129</b> Arpt Elev <b>131</b>
--	-------------------------	--

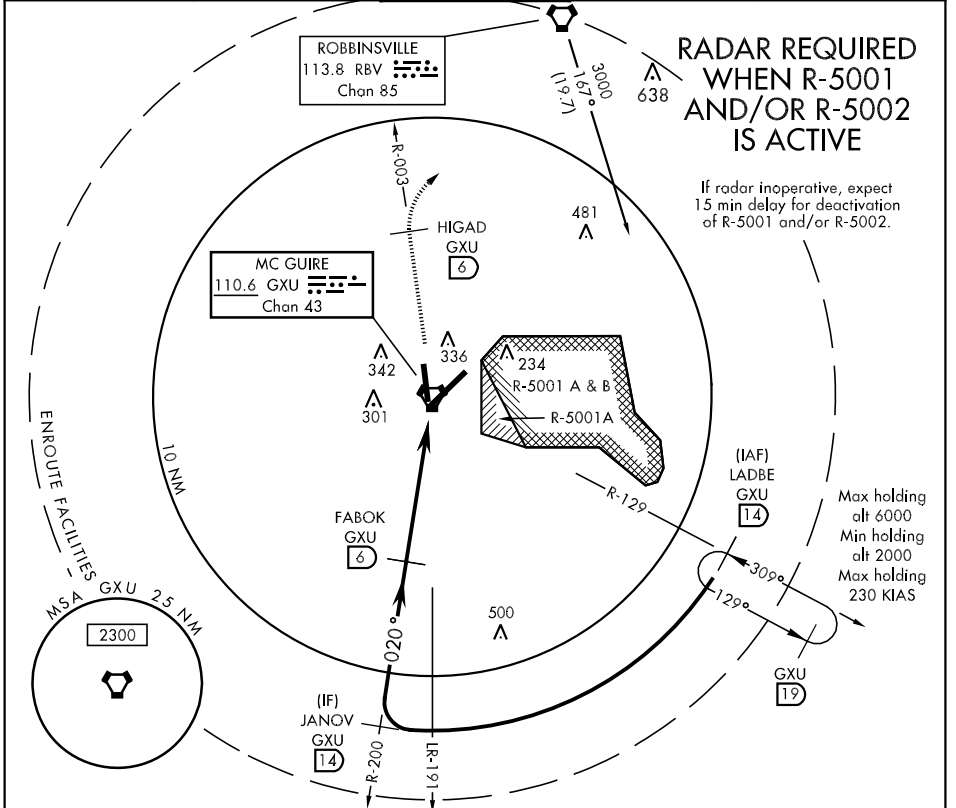
AL-150 [USAF]

(JOINT BASE MC GUIRE DIX LAKEHURST) (KWRI)

▼ \* Circling not authorized E of field.

MISSED APPROACH: Climb to 2000 via GXU R-003 to 6 DME (HIGAD) and right turn direct RBV VORTAC. Expect further clearance with ATC.

ATIS <b>110.6 270.1</b>	MC GUIRE APP CON <b>124.15 363.8</b>	MC GUIRE TOWER <b>118.65 255.6</b>	GND CON <b>121.8 275.8</b>	CLNC DEL <b>135.2 335.8</b>
----------------------------	---	---------------------------------------	-------------------------------	--------------------------------



NE-2, 07 FEB 2013 to 07 MAR 2013

NE-2, 07 FEB 2013 to 07 MAR 2013

EMERG SAFE ALT 100 NM 5100 FROM "GXU" VORTAC

LADBE GXU R-129 14		JANOV GXU R-200 14		FABOK GXU 6		2000 GXU R-003		HIGAD GXU 6	
2000		2000		2000		1.3		1.3	
020°		020°		2.92°		TCH 46		TCH 46	
GXU Arc		GXU Arc		GXU Arc		GXU Arc		GXU Arc	
4.9 NM		1 NM		1 NM		1 NM		1 NM	
CATEGORY	A	B	C	D	E				
S-36	560-1		431 (500-1)						
CIRCLING *	660-1	529 (600-1)	680-1½ 549 (600-1½)	700-2 569 (600-2)	1200-3 1069 (1100-3)				

**306**★

**288**▲

**228**■

**170**▲

**36**

**020° 6.0 NM from FABOK**

**ELEV 131** | **THRE 129**

HIRL all Rwy  
REIL Rwy 18-36  
TDZL/CL Rwy 6

WRIGHTSTOWN, NEW JERSEY  
Amdt 2 18OCT12

40°01'N-74°36'W

MC GUIRE FLD,  
(JOINT BASE MC GUIRE DIX LAKEHURST) (KWRI)

# VOR/DME or TACAN RWY 36