

# VOR/DME or TACAN RWY 24

MC GUIRE FLD,

(JOINT BASE MC GUIRE DIX LAKEHURST) (KWRI)

VORTAC GXU <b>110.6</b> Chan <b>43</b>	APCH CRS <b>240°</b>	Rwy ldg <b>10,014</b> THRE <b>103</b> Arpt Elev <b>131</b>
--	-------------------------	--

AL-150 [USAF]



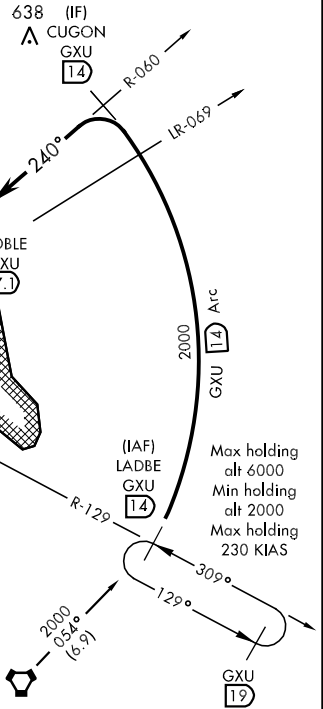
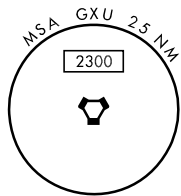
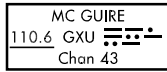
MISSED APPROACH: Climbing to 2000 via GXU R-223 to 1.4 DME (DAMTE). Expect further clearance from ATC.

ATIS <b>110.6 270.1</b>	MC GUIRE APP CON <b>124.15 363.8</b>	MC GUIRE TOWER <b>118.65 255.6</b>	GND CON <b>121.8 275.8</b>	CLNC DEL <b>135.2 335.8</b>
----------------------------	---	---------------------------------------	-------------------------------	--------------------------------

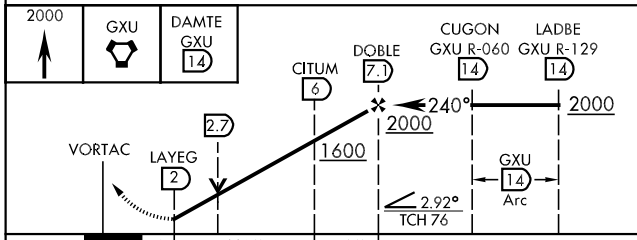
\*\* Circling not authorized E of field.

## RADAR REQUIRED WHEN R-5001 AND/OR R5002 IS ACTIVE

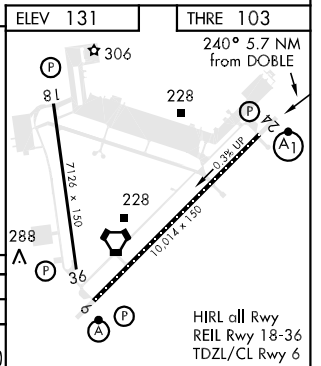
If radar inoperative, expect 15 min delay for deactivation of R-5001 and/or R-5002.



EMERG SAFE ALT 100 NM 5100 FROM "GXU" VORTAC



CATEGORY	A	B	C	D	E
S-24*	580/40	477 (500-34)	580/50	477 (500-1)	
CIRCLING**	660-1	529 (600-1)	680-1½ 549 (600-1½)	700-2 569 (600-2)	1200-3 1069(1100-3)



HIRL all Rwy  
REIL Rwy 18-36  
TDZL/CL Rwy 6

# VOR/DME or TACAN RWY 24

NE-2, 07 FEB 2013 to 07 MAR 2013

NE-2, 07 FEB 2013 to 07 MAR 2013