

VORTAC GXU 110.6 Chan 43	APCH CRS 178°	Rwy Idg THRE Arpt Elev 7126 122 131
--	-------------------------	---

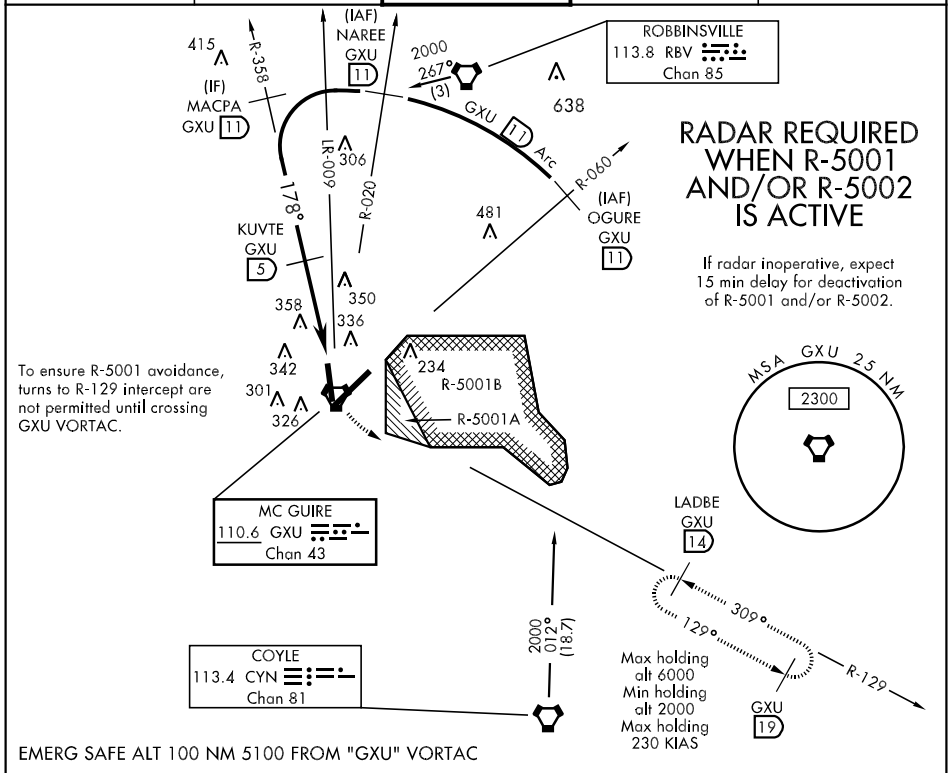
AL-150 [USAF]

(JOINT BASE MC GUIRE DIX LAKEHURST) (KWRI)

MC GUIRE FLD,

▼ *Circling not authorized E of field. MISSED APPROACH: Climb to 2000 via GXU VORTAC R-129 to 14 DME (LADBE) and hold. Do not turn prior to GXU.

ATIS 110.6 270.1	MC GUIRE APP CON 124.15 363.8	MC GUIRE TOWER 118.65 255.6	GND CON 121.8 275.8	CLNC DEL 135.2 335.8
----------------------------	---	---------------------------------------	-------------------------------	--------------------------------



NE-2, 07 FEB 2013 to 07 MAR 2013

NE-2, 07 FEB 2013 to 07 MAR 2013

EMERG SAFE ALT 100 NM 5100 FROM "GXU" VORTAC

OGURE GXU R-060 (11)	NAREE GXU R-020 (11)	MACPA GXU R-358 (11)	KUVTE GXU (5)	2000 GXU R-129	LADBE GXU (14)	ELEV 131	THRE 122
----------------------	----------------------	----------------------	---------------	----------------	----------------	----------	----------

2000	2000	2000	178°	2.5	1.5	VORTAC
------	------	------	------	-----	-----	--------

3.18°	TCH 68	3.5 NM	.4
-------	--------	--------	----

CATEGORY	A	B	C	D	E
S-18	640-1	518 (600-1)	640-1 2/3	518 (600-1 2/3)	
CIRCLING *	660-1	529 (600-1)	680-1 1/2 549 (600-1 1/2)	700-2 569 (600-2)	1200-3 1069 (1100-3)

HIRL all Rwy
REIL Rwy 18-36
TDZL/CL Rwy 6