

WRIGHTSTOWN, NEW JERSEY

RNAV (GPS) RWY 6

12292

APCH CRS	Rwy Idg	10,014
058°	THRE	131
	Arpt Elev	131

AL-150 [USAF]

(JOINT BASE MC GUIRE DIX LAKEHURST) (KWRI)

MC GUIRE FLD,

▼ * When ALS inop, increase CAT AB RVR to 55 and vis to 1 mile, CAT CDE vis to 1½ miles.
 ** Circling not authorized East of field.



MISSED APPROACH: Climbing to 2000 direct BORKE, expect further clearance from ATC.

ATIS 110.6 270.1	MC GUIRE APP CON 124.15 363.8	MC GUIRE TOWER 118.65 255.6	GND CON 121.8 275.8	CLNC DEL 135.2 335.8
----------------------------	-----------------------------------------	---------------------------------------	-------------------------------	--------------------------------

DME/DME RNP -0.3 NA.

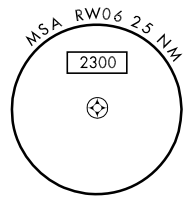
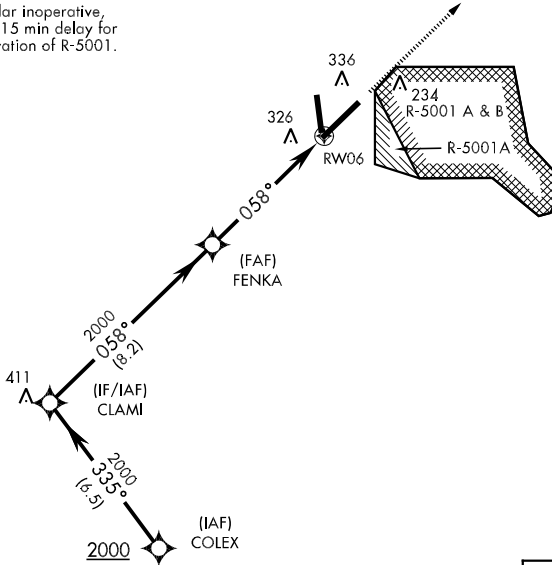
638



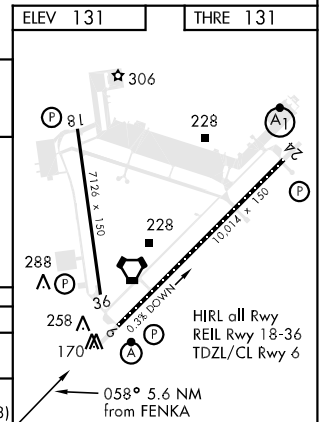
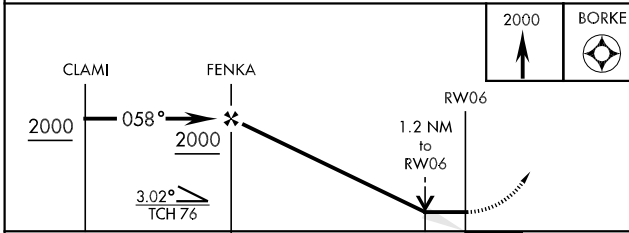
BORKE

RADAR REQUIRED WHEN R-5001 IS ACTIVE

If radar inoperative, expect 15 min delay for deactivation of R-5001.



EMERG SAFE ALT 100 NM 5100



CATEGORY	A	B	C	D	E
RNAV MDA *	580/24	449 (500-½)	580/45	449 (500-¾)	
CIRCLING **	660-1	529 (600-1)	680-1½ 549 (600-1½)	700-2 569 (600-2)	1200-3 1069 (1100-3)

WRIGHTSTOWN, NEW JERSEY
 Amdt 2 18OCT12

40°01'N-74°36'W

(JOINT BASE MC GUIRE DIX LAKEHURST) (KWRI)

MC GUIRE FLD,

RNAV (GPS) RWY 6

NE-2, 07 FEB 2013 to 07 MAR 2013

NE-2, 07 FEB 2013 to 07 MAR 2013