

POTTSTOWN THREE DEPARTURE (PTW3.PTW)

SHL-150 [USAF]

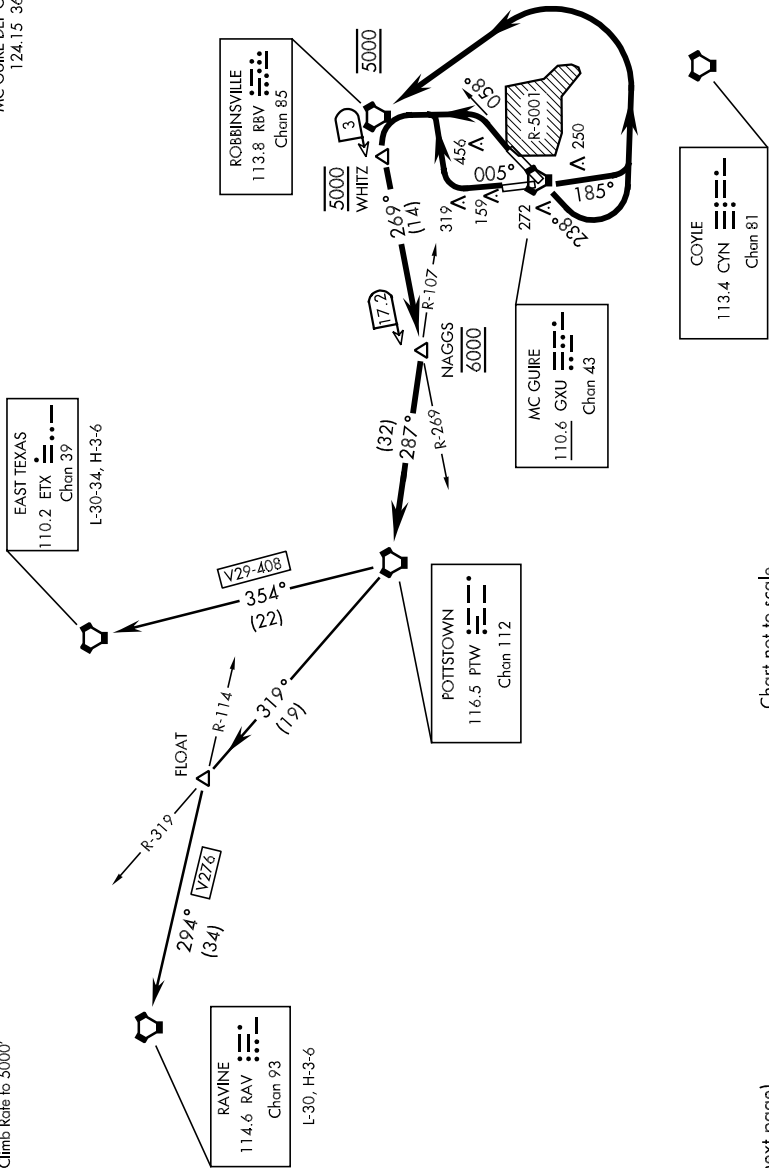
ATIS 110.6 270.1
 CLNC DEL
 135.2 335.8
 GND CON
 121.8 275.8
 MC GUIRE TOWER
 118.65 255.6
 MC GUIRE DEP CON
 124.15 363.8

NE-2, 07 FEB 2013 to 07 MAR 2013

RADAR REQUIRED

Rwy	Knots	60	120	180	240	300	360
6	V/V (fpm)	436	872	1308	1744	2180	2616
18	V/V (fpm)	351	702	1053	1404	1755	2106
24	V/V (fpm)	359	718	1077	1436	1795	2154
36	V/V (fpm)	421	842	1263	1684	2105	2526

ATC Climb Rate to 5000'



(Continued on next page)

Chart not to scale

NE-2, 07 FEB 2013 to 07 MAR 2013

POTTSTOWN THREE DEPARTURE (PTW3.PTW)