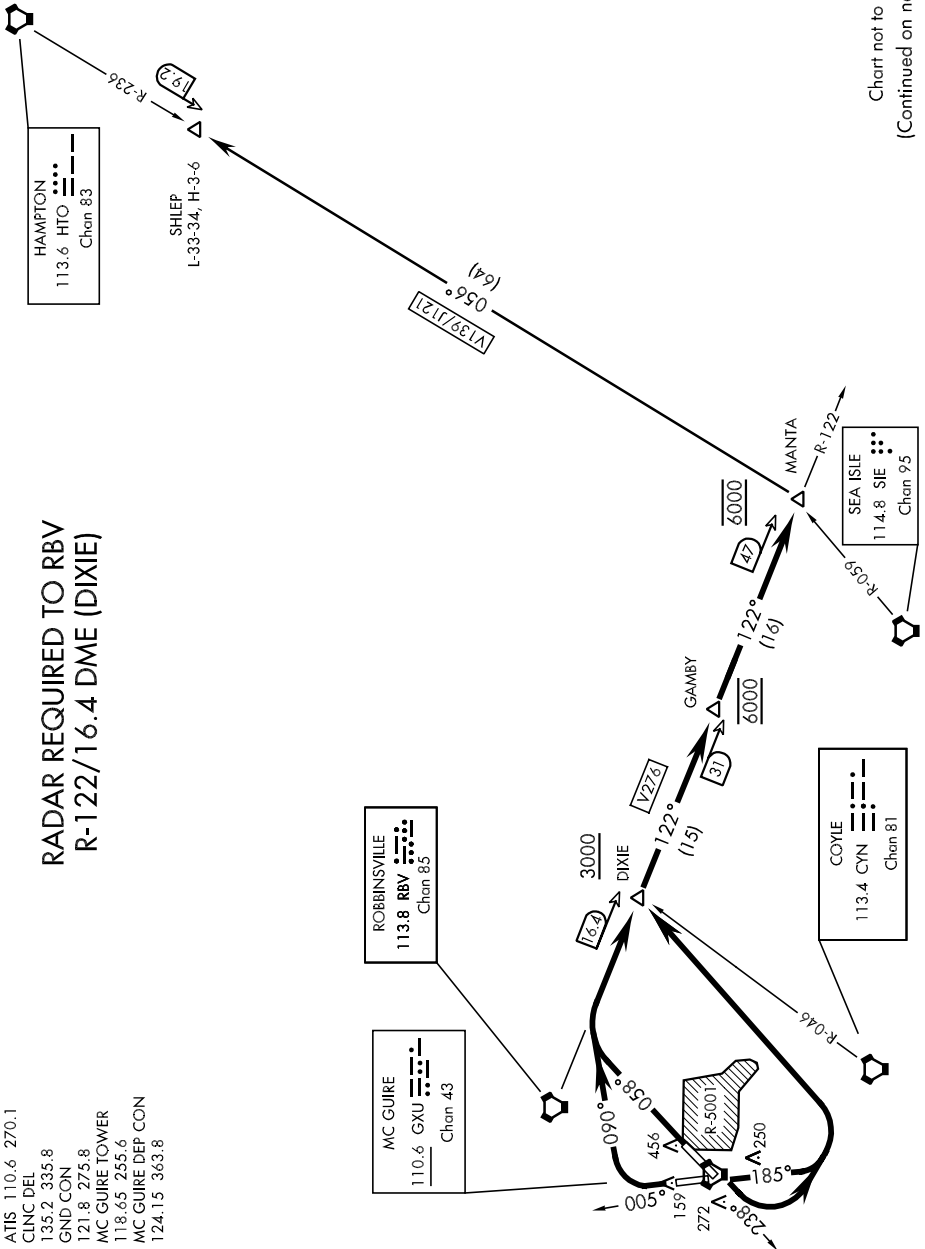


# POINT PLEASANT FIVE DEPARTURE (PTPL5.MANTA)

SHL-150 [USAF]

Chart not to scale  
(Continued on next page)



**RADAR REQUIRED TO RBV  
R-122/16.4 DME (DIXIE)**

ATIS 110.6 270.1  
 CLNC DEL 135.2 335.8  
 GND CON 121.8 275.8  
 MC GUIRE TOWER 118.65 255.6  
 MC GUIRE DEP CON 124.15 363.8

ROBBERSVILLE  
 113.8 RBV  
 Chan 85

MC GUIRE  
 110.6 GXU  
 Chan 43

COYLE  
 113.4 CYN  
 Chan 81

SEA ISLE  
 114.8 SIE  
 Chan 95

HAMPTON  
 113.6 HTO  
 Chan 83

SHLEP  
 L-33-34, H-3-6

NE-2, 07 FEB 2013 to 07 MAR 2013

NE-2, 07 FEB 2013 to 07 MAR 2013

# POINT PLEASANT FIVE DEPARTURE (PTPL5.MANTA)