

MODENA FOUR DEPARTURE (MXE4.MXE)

NE-2, 07 FEB 2013 to 07 MAR 2013

**RADAR REQUIRED UNTIL CROSSING
MXE VORTAC R-278/23.6 DME (PENSY)**

ATIS 110.6 270.1
 CLNC DEL 135.2 335.8
 GND CON 121.8 275.8
 MC GUIRE TOWER 118.65 255.6
 MC GUIRE DEP CON 124.15 363.8

ATC Climb Rate to 5000'

Rwy	Knots	60	120	180	240	300	360
6	V/V(fpm)	436	872	1308	1744	2180	2616
18	V/V(fpm)	351	702	1053	1404	1755	2106
24	V/V(fpm)	359	718	1077	1436	1795	2154
36	V/V(fpm)	421	842	1263	1684	2105	2526

SHL-150 [USAF]

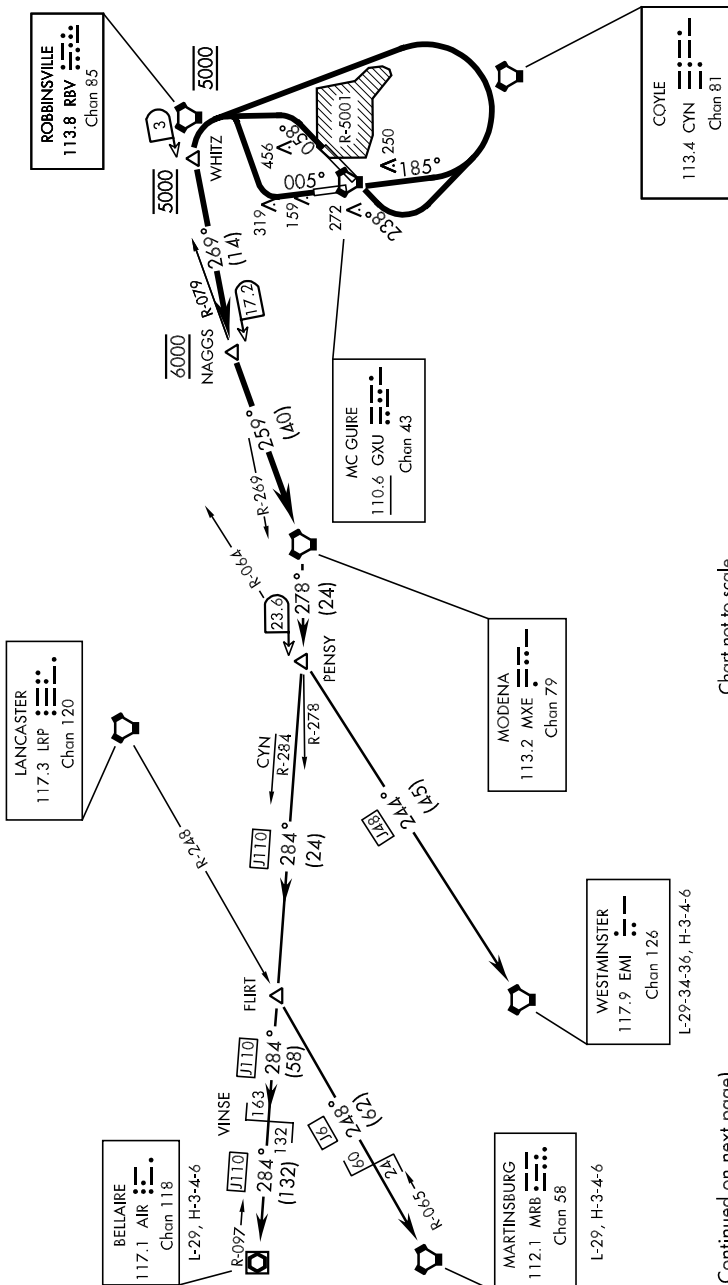


Chart not to scale

(Continued on next page)

MODENA FOUR DEPARTURE (MXE4.MXE)

NE-2, 07 FEB 2013 to 07 MAR 2013