

LOC I-WRI 110.1	APCH CRS 058°	Rwy Idg 10,014 THRE 131 Arpt Elev 131
---------------------------	-------------------------	--

AL-150 [USAF]

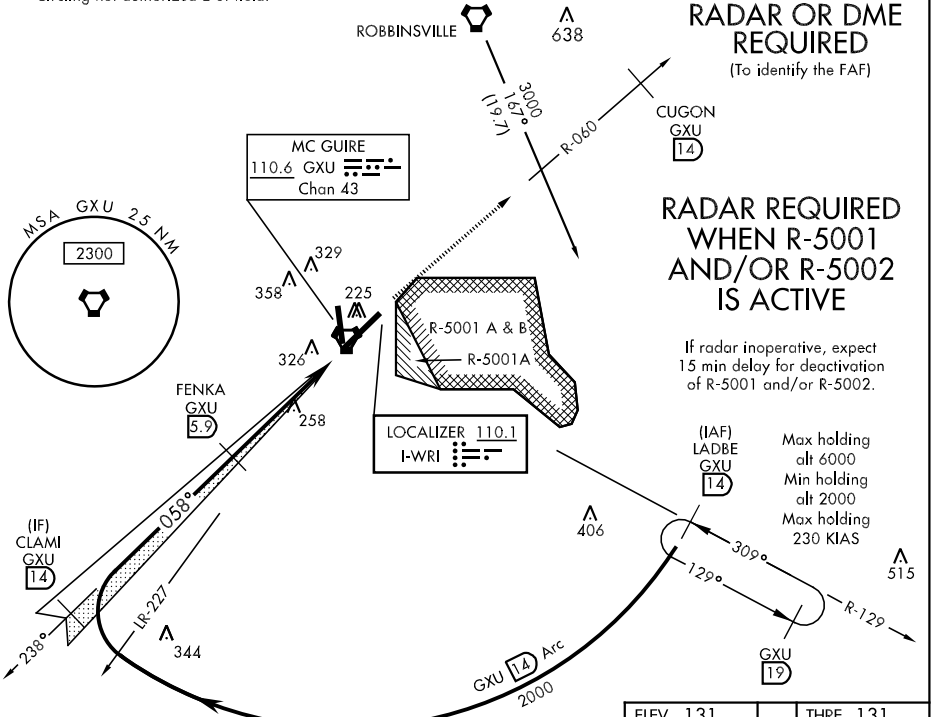
MISSED APPROACH: Climbing to 2000, intercept GXU R-060 to GXU R-060/14 DME (CUGON), expect further clearance from ATC.

▼ * When ALS inop, increase RVR to 40 and vis to ¼ mile.
 ** When ALS inop, increase CAT AB RVR to 55 and vis to 1 mile, CAT CDE vis to 1¼ miles.



ATIS 110.6 270.1	MC GUIRE APP CON 124.15 363.8	MC GUIRE TOWER 118.65 255.6	GND CON 121.8 275.8	CLNC DEL 135.2 335.8
----------------------------	---	---------------------------------------	-------------------------------	--------------------------------

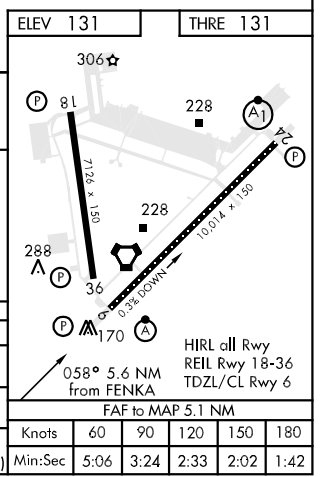
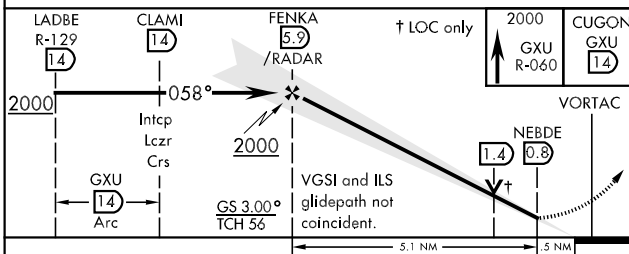
*** Circling not authorized E of field.



NE-2, 07 FEB 2013 to 07 MAR 2013

NE-2, 07 FEB 2013 to 07 MAR 2013

EMERG SAFE ALT 100 NM 5100 FROM "GXU" VORTAC



CATEGORY	A	B	C	D	E
S-ILS 6 *	331/24		200 (200-½)		
S-LOC 6 **	560/24	429 (500-½)	560/40		429 (500-¾)
CIRCLING ***	660-1	529 (600-1)	680-1½ 549 (600-1½)	700-2 569 (600-2)	1200-3 1069 (1100-3)