

ILS RWY 6 (CAT II)

MC GUIRE FLD,
(JOINT BASE MC GUIRE DIX LAKEHURST) (KWRI)

LOC I-WRI 110.1	APCH CRS 058°	Rwy Idg THRE 10,014 Arpt Elev 131
---------------------------	-------------------------	---

AL-150 [USAF]

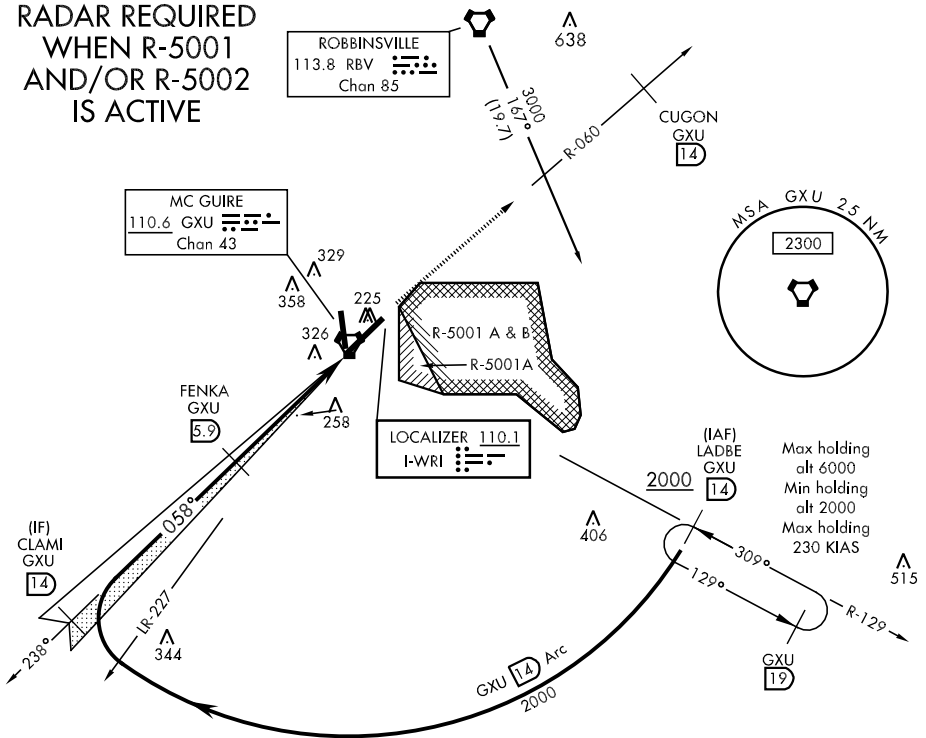
MISSED APPROACH: Climbing to 2000, intercept GXU TACAN R-060 to GXU R-060/14 DME (CUGON), expect further clearance from ATC.

If radar inoperative, expect 15 min delay for deactivation of R-5001 and/or R-5002.



ATIS 110.6 270.1	MC GUIRE APP CON 124.15 363.8	MC GUIRE TOWER 118.65 255.6	GND CON 121.8 275.8	CLNC DEL 135.2 335.8
----------------------------	---	---------------------------------------	-------------------------------	--------------------------------

**RADAR REQUIRED
WHEN R-5001
AND/OR R-5002
IS ACTIVE**

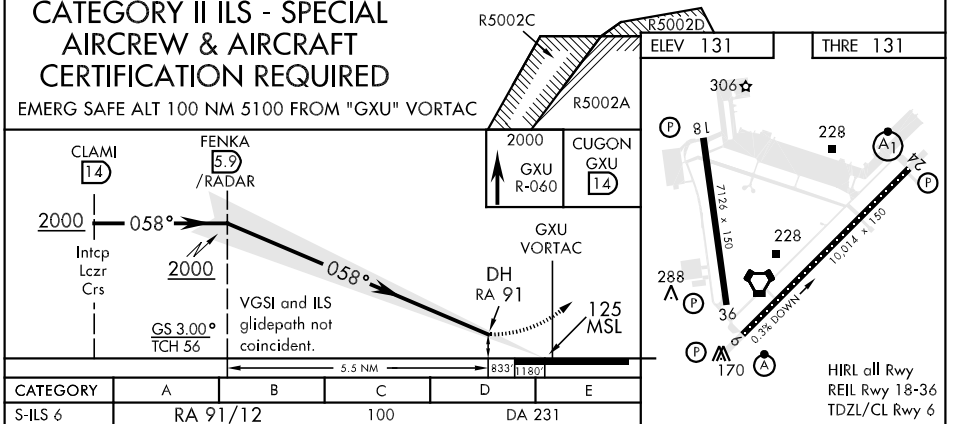


NE-2, 07 FEB 2013 to 07 MAR 2013

NE-2, 07 FEB 2013 to 07 MAR 2013

CATEGORY II ILS - SPECIAL AIRCREW & AIRCRAFT CERTIFICATION REQUIRED

EMERG SAFE ALT 100 NM 5100 FROM "GXU" VORTAC



CATEGORY	A	B	C	D	E
S-ILS 6	RA 91/12		100	DA 231	

ILS RWY 6 (CAT II)

HIRL all Rwy
REIL Rwy 18-36
TDZL/CL Rwy 6