

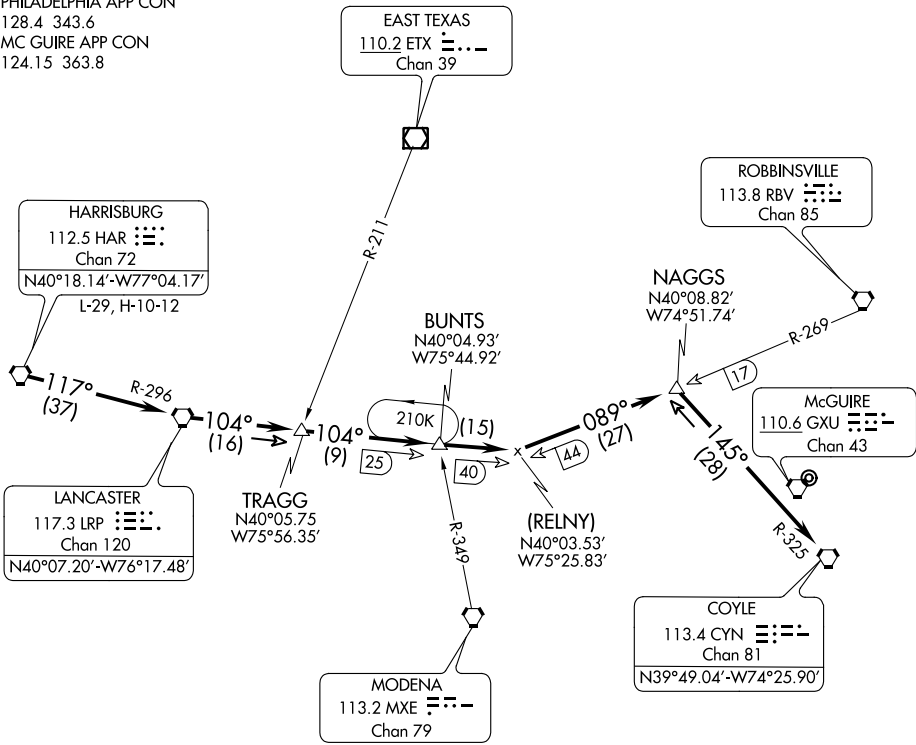
(HAR.HAR5) 12040

ST-150 (FAA)

JOINT BASE MC GUIRE DIX LAKEHURST (WRI)
WRIGHTSTOWN, NEW JERSEY

HARRISBURG FIVE ARRIVAL

JOINT BASE MC GUIRE DIX LAKEHURST ATIS ★
110.6 270.1
PHILADELPHIA APP CON
128.4 343.6
MC GUIRE APP CON
124.15 363.8



NE-2, 07 FEB 2013 to 07 MAR 2013

NE-2, 07 FEB 2013 to 07 MAR 2013

NOTE: Route depicted beyond Naggs Int is for
lost communications or radar outage only.

NOTE: Not for use by fighter type aircraft.

NOTE: Chart not to scale

ARRIVAL ROUTE DESCRIPTION

From over HAR VORTAC via HAR R-117 and LRP R-296 to LRP VORTAC. Thence via LRP R-104 to LRP R-104/40 DME and RBV R-269/44 DME. Thence via RBV R-269 to NAGGS INT. Thence via CYN R-325 to CYN VORTAC. Expect radar vector to final approach 8 DME west of GXU VORTAC. Expect descent below 10000 after HAR VORTAC.

HARRISBURG FIVE ARRIVAL
(HAR.HAR5) 12040

WRIGHTSTOWN, NEW JERSEY
JOINT BASE MC GUIRE DIX LAKEHURST (WRI)