

VOR RWY 22

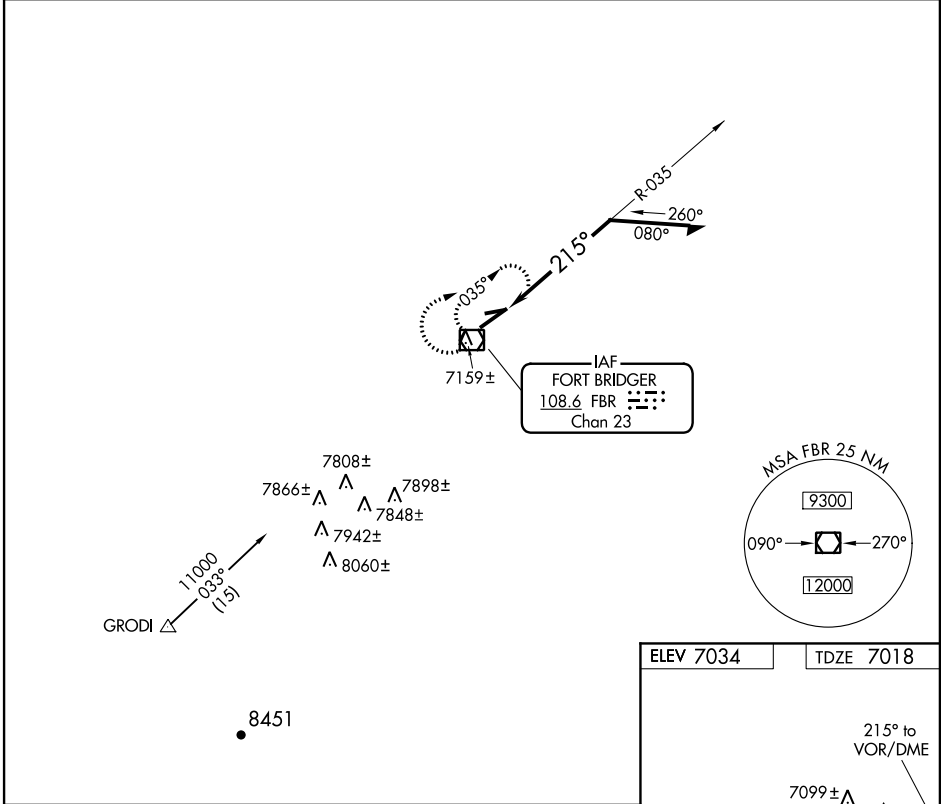
FORT BRIDGER (FBR)

VOR/DME FBR 108.6 Chan 23	APP CRS 215°	Rwy Idg TDZE Apt Elev 6404 7018 7034
---	------------------------	--

NA If local altimeter setting not received, procedure NA.

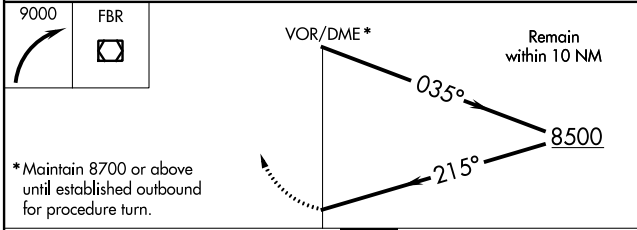
MISSED APPROACH: Climbing right turn to 9000 in FBR VOR/DME holding pattern.

AWOS-2 118.8	CASPER RADIO 122.3	UNICOM 122.8 (CTAF) 0
------------------------	------------------------------	--



NW-1, 07 FEB 2013 to 07 MAR 2013

NW-1, 07 FEB 2013 to 07 MAR 2013



CATEGORY	A	B	C	D
S-22	7440-1	422 (500-1)	7440-1 ¼	422 (500-1 ¼)
CIRCLING	7480-1 446 (500-1)	7500-1 466 (500-1)	7500-1 ½ 466 (500-1 ½)	7600-2 566 (600-2)

ELEV 7034	TDZE 7018
-----------	-----------

