

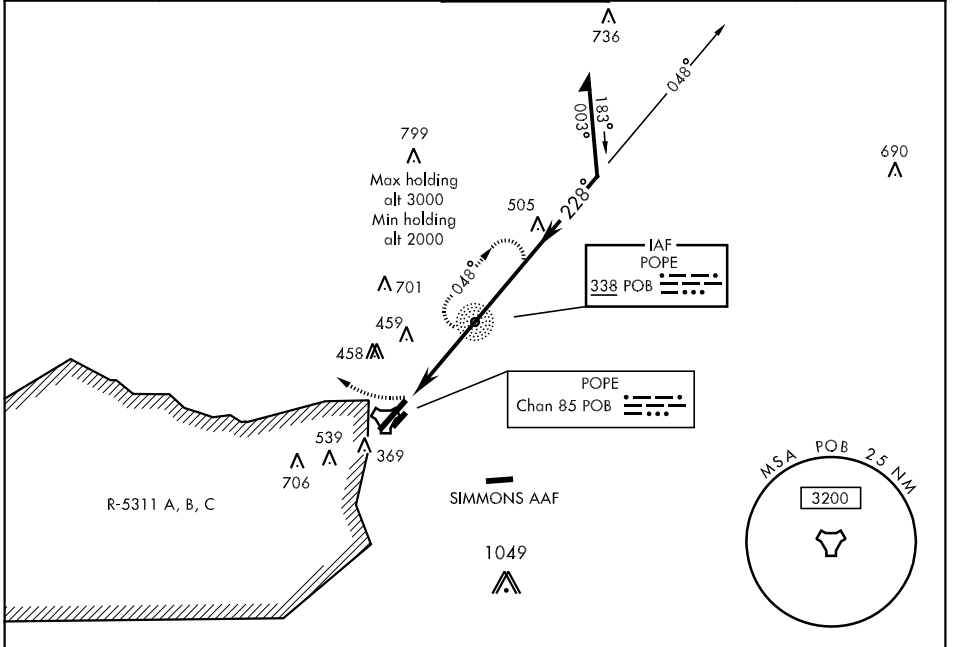
NDB POB 338	APCH CRS 228°	Rwy ldg THRE Arpt Elev 7501 190 217	AL-147 [USAF]	POPE AAF (KPOB)
-----------------------	-------------------------	---	---------------	-----------------

▼ * When ALS inop, increase CAT AB RVR to 55 and vis to 1 mile, CAT CD vis to 1½ miles.
 ** Circling not authorized SE of Rwy 5-23.



MISSED APPROACH: Climbing right turn to 2000 direct POB NDB and hold, continue climb-in-hold to 2000.

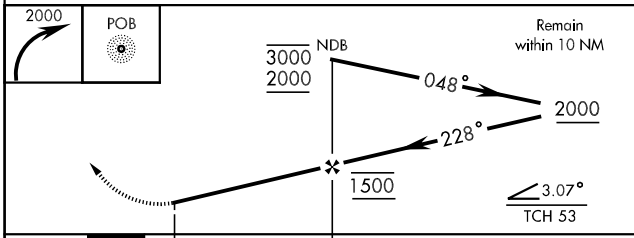
ATIS 132.3 353.725	FAYETTEVILLE APP CON 125.175 285.575 (271°-090°) 133.0 295.0 (091°-270°)	POPE TOWER 135.025 291.1	GND CON 124.55 275.8	CLNC DEL 275.8
------------------------------	--	------------------------------------	--------------------------------	--------------------------



CAUTION: Avoid R-5311 A, B, C located 2.5 DME West of field

RADAR REQUIRED

EMERG SAFE ALT 100 NM 5300 FROM "POB" TACAN



ELEV 217	THRE 190
----------	----------

Rwy 5-23 ldg 8501' by use of dep end overrun
 Rwy 5-23 tkof 8501' incl NE or SW surface by back taxiing

228° 3.9 NM from NDB

REIL Rwy 5
 HIRL Rwy 5-23
 IRL Rwy 050° 230°

FAF to MAP 3.2 NM					
Knots	60	90	120	150	180
Min:Sec	3:12	2:08	1:36	1:17	1:04

CATEGORY	A	B	C	D
S-23 *	760/40 570 (600-¾)	760-1¼ 570 (600-1¼)		
CIRCLING **	760-1 543 (600-1)	760-1½ 543 (600-1½)	860-2 643 (700-2)	

SE-2, 07 FEB 2013 to 07 MAR 2013

SE-2, 07 FEB 2013 to 07 MAR 2013