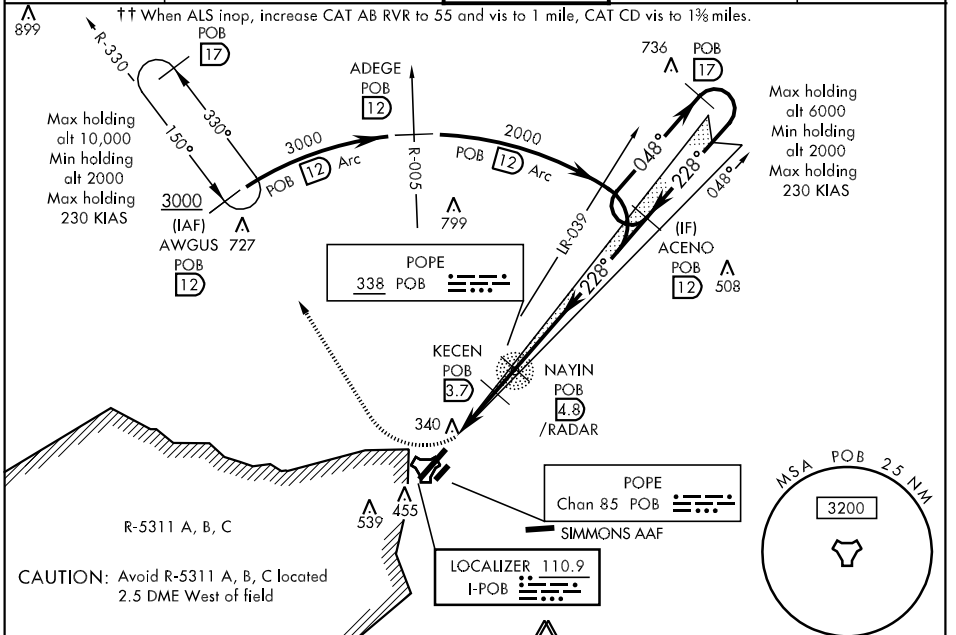


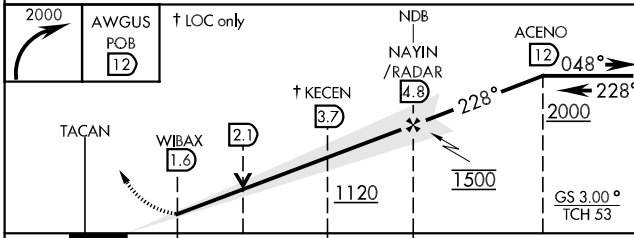
LOC I-POB 110.9	APCH CRS 228°	Rwy Idg THRE 7501 Arpt Elev 190 217	AL-147 [USAF]	POPE AAF (KPOB)
---------------------------	-------------------------	--	---------------	-----------------

* When ALS inop, increase CAT ABCD RVR to 40 and vis to ¼ mile.
 ** When ALS inop, increase CAT AB RVR to 55 and vis to 1 mile, CAT CD vis to 1¼ miles.
 *** Circling not authorized SE of Rwy 5-23.

ATIS 132.3 353.725	FAYETTEVILLE APP CON 125.175 285.575 133.0 295.0 (271° - 090°) (091° - 270°)	POPE TOWER 135.025 291.1	GND CON 124.55 275.8	CLNC DEL 275.8
------------------------------	--	------------------------------------	--------------------------------	--------------------------



RADAR REQUIRED
EMERG SAFE ALT 100 NM 5300 FROM "POB" TACAN



CATEGORY	A	B	C	D
S-ILS 23 *	399/24		209	(200-½)
S-LOC 23 **	620/40		430	(500-¾)
CIRCLING ***	760-1	543 (600-1)	760-1½ 543 (600-½)	860-2 643 (700-2)
WITHOUT LAST STEPDOWN FIX				
S-LOC 23 ††	640/40	450 (500-¾)	640/45	450 (500-¾)

ELEV 217	THRE 190
Rwy 5-23 Idg 8501' by use of dep end overrun Rwy 5-23 tkof 8501' incl NE or SW surface by back taxiing	
228° 3.9 NM from FAF	
FAF to MAP 3.2 NM	
Knots	60 90 120 150 180
Min:Sec	3:12 2:08 1:36 1:17 1:04

SE-2, 07 FEB 2013 to 07 MAR 2013

SE-2, 07 FEB 2013 to 07 MAR 2013