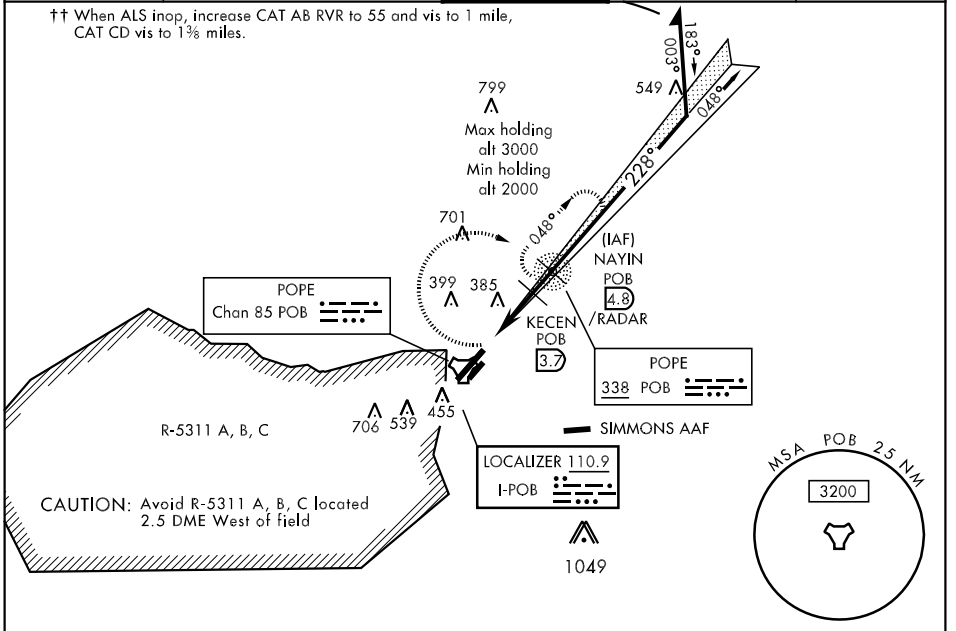


LOC I-POB 110.9	APCH CRS 228°	Rwy Idg THRE 7501 Arpt Elev 190 217	AL-147 [USAF]	POPE AAF (KPOB)
---------------------------	-------------------------	---	---------------	-----------------

▼ * When ALS inop, increase CAT ABCD RVR to 40 and vis to 3/4 mile.
 ** When ALS inop, increase CAT AB RVR to 55 and vis to 1 mile, CAT CD vis to 1/4 miles.
 *** Circling not authorized SE of Rwy 5-23.

ALSF-1 MISSED APPROACH: Climbing right turn to 2000 direct POB NDB and Hold. Continue climb in hold to 2000.

ATIS 132.3 353.725	FAYETTEVILLE APP CON 125.175 285.575 (271° - 090°) 133.0 295.0 (091° - 270°)	POPE TOWER 135.025 291.1	GND CON 124.55 275.8	CLNC DEL 275.8
------------------------------	--	------------------------------------	--------------------------------	--------------------------

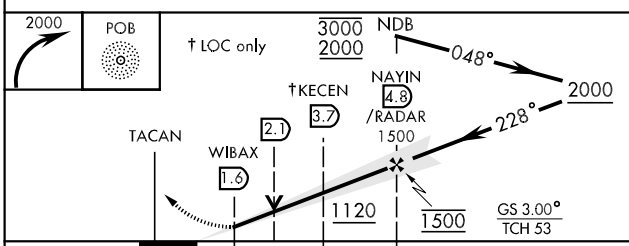


SE-2, 07 FEB 2013 to 07 MAR 2013

SE-2, 07 FEB 2013 to 07 MAR 2013

RADAR REQUIRED

EMERG SAFE ALT 100 NM 5300 FROM "POB" TACAN



ELEV 217	THRE 190
----------	----------

Rwy 5-23 Idg 8501' by use of dep end overrun
 Rwy 5-23 tkaf 8501' incl NE or SW surface by back taxiing

FAF to MAP 3.2 NM

Knots	60	90	120	150	180
Min:Sec	3:12	2:08	1:36	1:17	1:04