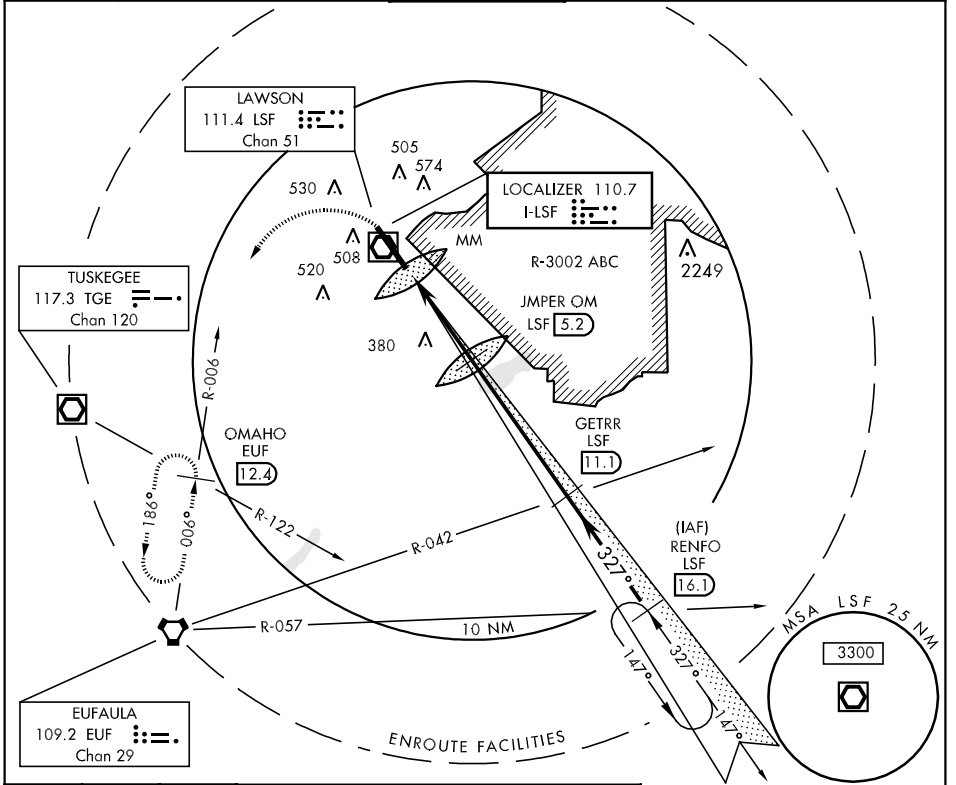
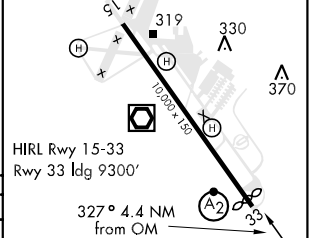
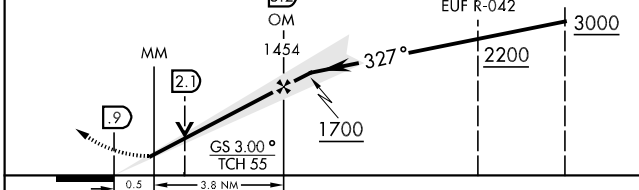


LOC I-LSF 110.7	APCH CRS 327°	Rwy Idg TDZE Arpt Elev 9300 226 232	AL-146 [USA]	LAWSON AAF (KLSF)
---------------------------	-------------------------	---	--------------	-------------------

<p>▼ * Circling not authorized E of Rwy 15-33.</p> <p>▲ NA when tower closed.</p>		<p>SALSF</p>	<p>MISSED APPROACH: Climb to 1000 then climbing left turn to 2400 via EUF R-006 to OMAHO INT/EUF 12.4 and hold.</p>		
ATIS ★ 134.375	125.5 323.1 blw 7000 126.55 353.75 7000 and abv	LAWSON TOWER ★ 119.05 269.525	GND CON 121.7 254.25	CLNC DEL 121.7 251.15	ASR/ PAR



1000	2400	OMAHO EUF 12.4	JMPER OM 5.2	GETRR EUF R-042 11.1	RENFO EUF R-057 16.1	ELEV 232	TDZE 226
------	------	----------------	--------------	----------------------	----------------------	----------	----------



CATEGORY	A		B		C		D	
S-ILS 33	426/24	200	(200-½)		426/40	200	(200-¾)	
S-LOC 33	640/40	414	(500-¾)		640/50	414	(500-1)	
CIRCLING *	820-1	588	(600-1)		840-1¾ 608 (700-1¾)		880-2 648 (700-2)	

LOC FAF to MAP 4.4 NM					
Knots	60	90	120	150	180
Min:Sec	4:24	2:56	2:12	1:46	1:28

SE-4, 07 FEB 2013 to 07 MAR 2013

SE-4, 07 FEB 2013 to 07 MAR 2013