

FLORENCE, SOUTH CAROLINA

AL-145 (FAA)

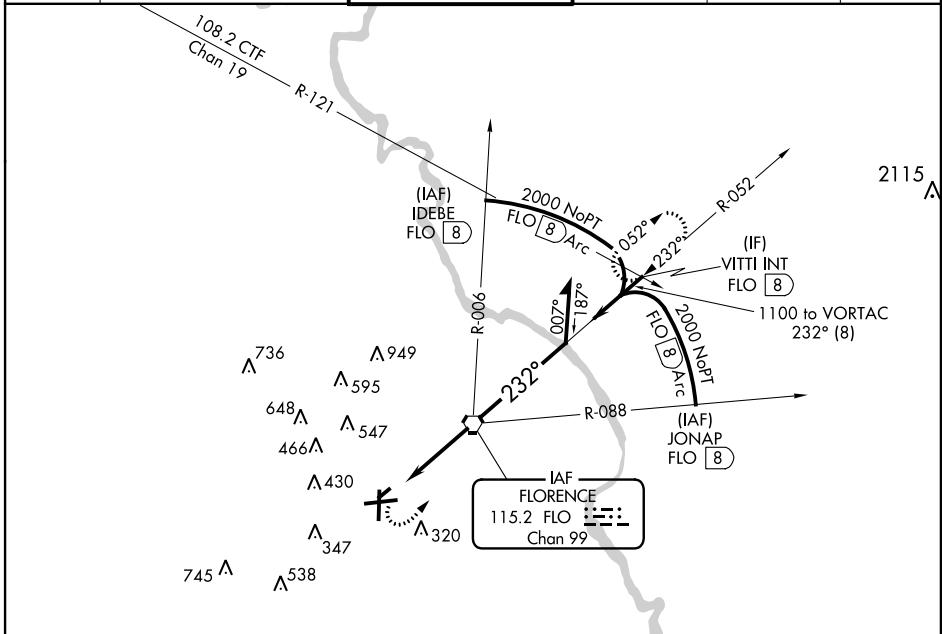
VOR or TACAN-A

FLORENCE RGNL (F'LO)

VORTAC FLO 115.2 Chan 99	APP CRS 232°	Rwy Idg TDZE Apt Elev	N/A N/A 146
--	------------------------	-----------------------------	--

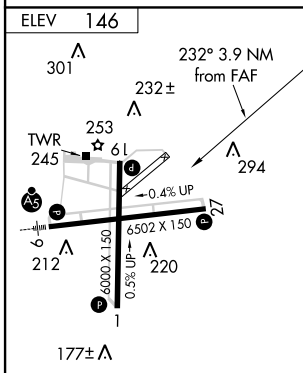
<p>⚠ When local altimeter setting not received, use Darlington altimeter setting and increase all MDA 60 ft.</p>	<p>MISSED APPROACH: Climbing left turn to 2000 via heading 030° and FLO VORTAC R-052 to VITTI Int/FLO 8 DME and hold.</p>
---	--

ATIS 123.625	FLORENCE APP CON* 118.6 341.7 (256°-074°) 135.25 316.15 (075°-255°)	FLORENCE TOWER* 125.1 (CTAF) 353.85	GND CON 121.9 353.85	CLNC DEL 121.9 353.85	UNICOM 122.95
------------------------	---	--	--------------------------------	---------------------------------	-------------------------



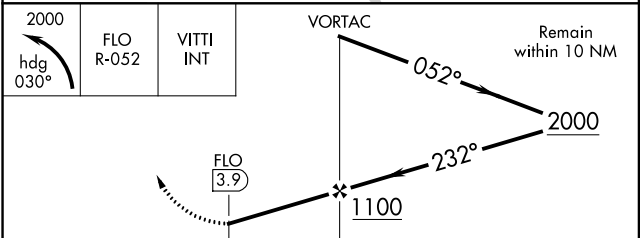
SE-2, 07 FEB 2013 to 07 MAR 2013

SE-2, 07 FEB 2013 to 07 MAR 2013



MIRL Rwy 1-19
REIL Rwys 1, 19 and 27
HIRL Rwy 9-27

FAF to MAP 3.9 NM					
Knots	60	90	120	150	180
Min:Sec	3:54	2:36	1:57	1:34	1:18



CATEGORY	A	B	C	D
CIRCLING	640-1	494 (500-1)	640-1½ 494 (500-1½)	740-2 594 (600-2)

FLORENCE, SOUTH CAROLINA
Amdt 6 13010

34°11'N-79°43'W

FLORENCE RGNL (F'LO)

VOR or TACAN-A