


WAAS CH 70710 W09A	APP CRS 088°	Rwy Idg TDZE 147 Apt Elev 147	6502
--	------------------------	---	-------------

RNAV (GPS) RWY 9

FLORENCE RGNL (F'L0)

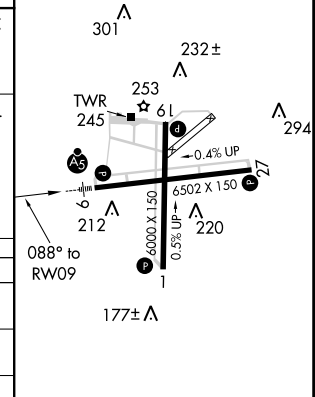
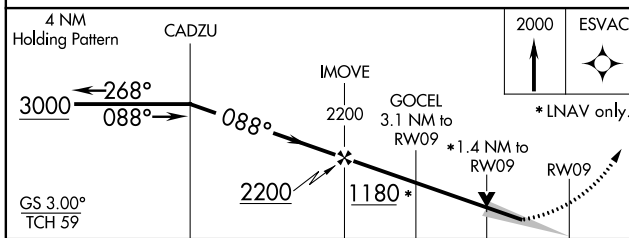
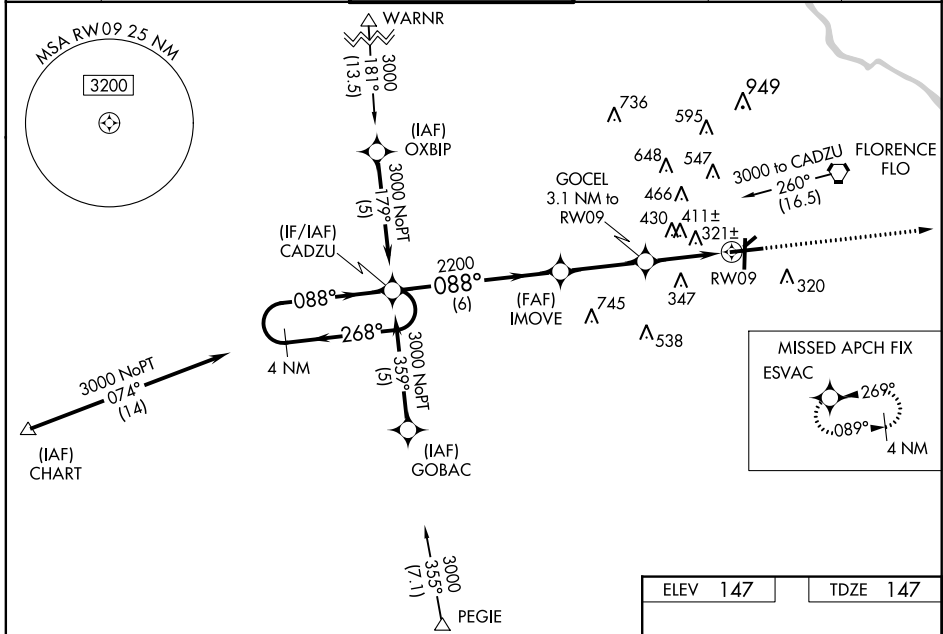
▼ When VGSi inop, Circling Rwy 1 and 19 NA at night. For uncompensated Baro-VNAV systems, LNAV/VNAV NA below -15°C (5°F) or above 49°C (120°F). DME/DME RNP-0.3 NA. When local altimeter setting not received, use Darlington altimeter setting and increase LPV DA 489 feet, LNAV/VNAV DA to 695 feet and all visibilities to 1 ¼ miles; increase all MDA 60 feet and LNAV Cat C visibility ¼ mile. For inoperative MALS/R when using Darlington altimeter setting, increase LPV all Cats visibility to 1 ¼ mile. Baro-VNAV and VDP NA when using Darlington altimeter setting.

MALS/R



MISSED APPROACH:
Climb to 2000 direct
ESVAC and hold.

ATIS 123.625	FLORENCE APP CON* 118.6 341.7 135.25 316.15 (256°-074°) (075°-255°)	FLORENCE TOWER* 125.1 (CTAF) 0 353.85	GND CON 121.9 353.85	CLNC DEL 121.9 353.85	UNICOM 122.95
------------------------	---	---	--------------------------------	---------------------------------	-------------------------



CATEGORY	A	B	C	D
LPV DA		441-½	294 (300-½)	
LNAV/VNAV DA		623-1¼	476 (500-1¼)	
LNAV MDA	660-½	513 (600-½)	660-1 513 (600-1)	660-1¼ 513 (600-1¼)
CIRCLING	660-1	513 (600-1)	660-1½ 513 (600-1½)	740-2 593 (600-2)

MIRL Rwy 1-19
REIL Rwys 1,19 and 27
HIRL Rwy 9-27

SE-2, 07 FEB 2013 to 07 MAR 2013

SE-2, 07 FEB 2013 to 07 MAR 2013