

WAAS CH 61310 W27A	APP CRS 269°	Rwy Idg TDZE Apt Elev	6502 139 146
--	------------------------	-----------------------------	---

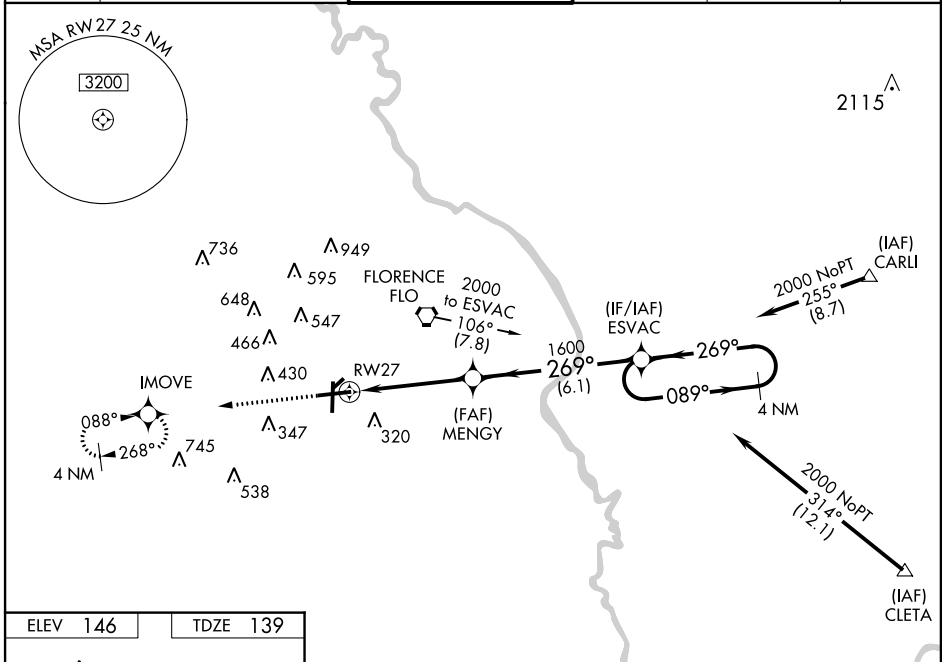
RNAV (GPS) RWY 27

FLORENCE RGNL (F'L O)

⚠ Baro-VNAV NA when using Darlington altimeter setting. For uncompensated Baro-VNAV systems, LNAV/VNAV NA below -15°C (5°F) or above 48°C (118°F). DME/DME RNP-0.3 NA.
⚠ Visibility reduction by helicopters NA. When local altimeter setting not received, use Darlington altimeter setting and increase all DA/MDA 60 feet. Increase LPV and LNAV/VNAV all Cats visibility ¼ mile and LNAV Cat D ¼ mile.

MISSED APPROACH:
Climb to 2000 direct IMOVE and hold.

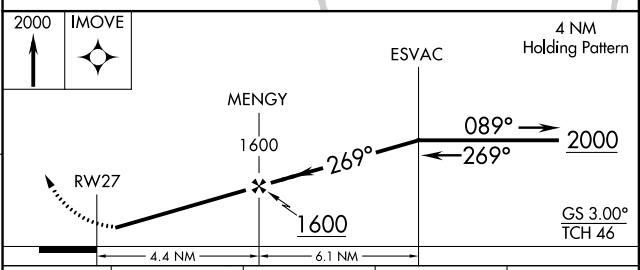
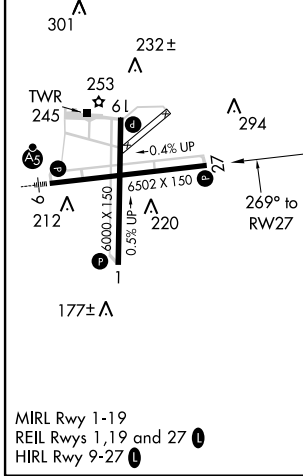
ATIS 123.625	FLORENCE APP CON* 118.6 341.7 (256°-074°) 135.25 316.15 (075°-255°)	FLORENCE TOWER* 125.1 (CTAF) 353.85	GND CON 121.9 353.85	CLNC DEL 121.9 353.85	UNICOM 122.95
------------------------	---	--	--------------------------------	---------------------------------	-------------------------



SE-2, 07 FEB 2013 to 07 MAR 2013

SE-2, 07 FEB 2013 to 07 MAR 2013

ELEV 146	TDZE 139
-----------------	-----------------



CATEGORY	A	B	C	D
LPV DA		474-1¼	335 (400-1¼)	
LNAV/VNAV DA		595-1¾	456 (500-1¾)	
LNAV MDA	560-1	421 (500-1)	560-1¼	421 (500-1¼)
CIRCLING	640-1	494 (500-1)	640-1½ 494 (500-1½)	740-2 594 (600-2)