

FARGO, NORTH DAKOTA

AL-144 (FAA)

VOR/DME or TACAN RWY 18

FARGO/HECTOR INTL (FAR)

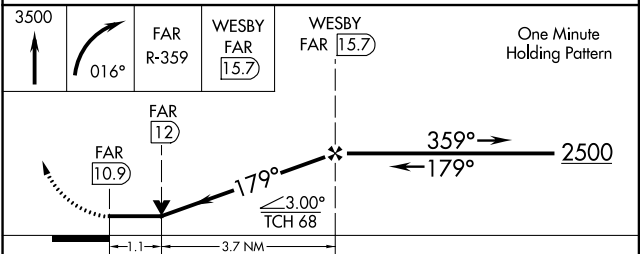
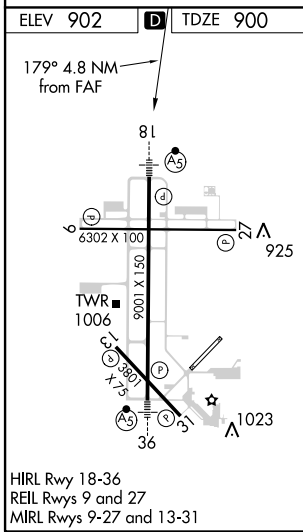
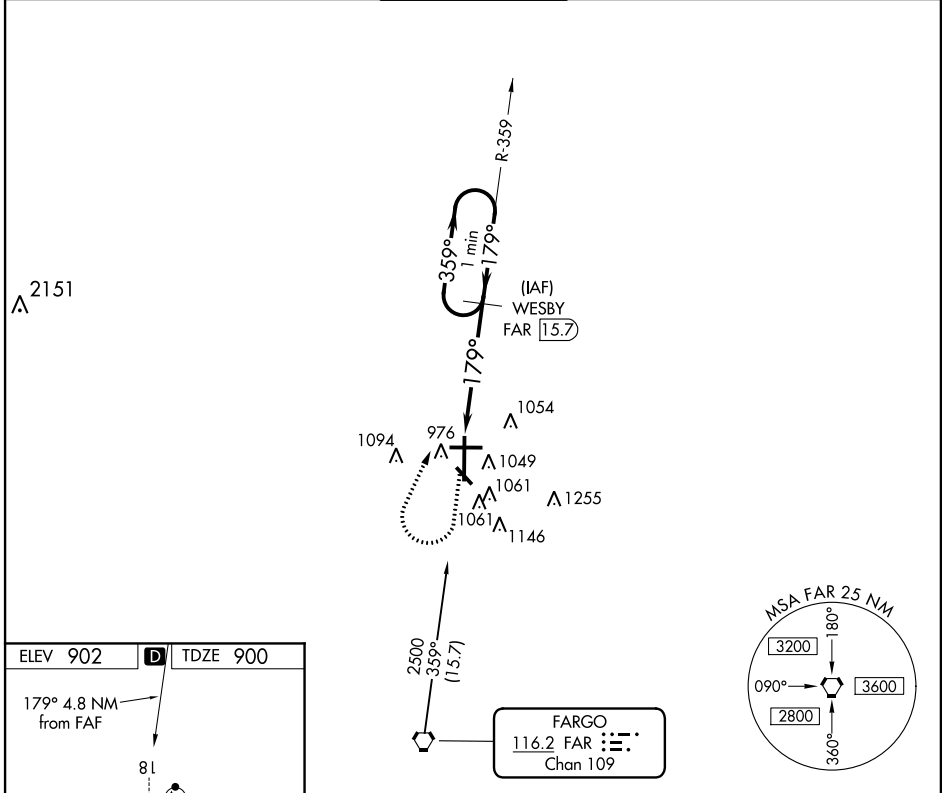
VORTAC FAR 116.2 Chan 109	APP CRS 179°	Rwy Idg TDZE Apt Elev	9001 900 902
---	------------------------	-----------------------------	---

<p>For inoperative MALSR, increase Cat D visibility to RVR 6000 and Cat E to 1½.</p>		<p>MISSED APPROACH: Climb to 3500 then right turn via heading 016° and FAR R-359 to WESBY/15.7 DME and hold.</p>
	<p>ASR</p>	

ATIS 124.5 379.2	FARGO APP CON* 120.4 377.15	FARGO TOWER 133.8 290.4	GND CON 121.9 348.6	CLNC DEL 121.9 348.6
----------------------------	---------------------------------------	-----------------------------------	-------------------------------	--------------------------------

NC-1, 07 FEB 2013 to 07 MAR 2013

NC-1, 07 FEB 2013 to 07 MAR 2013



CATEGORY	A	B	C	D	E
S-18	1320/24	420 (500-½)	1320/40 420 (500-¾)	1320/50	420 (500-1)
CIRCLING	1380-1	478 (500-1)	1380-1½ 478 (500-1½)	1500-2 598 (600-2)	1560-2¼ 658 (700-2¼)

FARGO, NORTH DAKOTA
Amdt 1B 13010

46°55'N-96°49'W

FARGO/HECTOR INTL (FAR)

VOR/DME or TACAN RWY 18