


FARGO, NORTH DAKOTA

AL-144 (FAA)

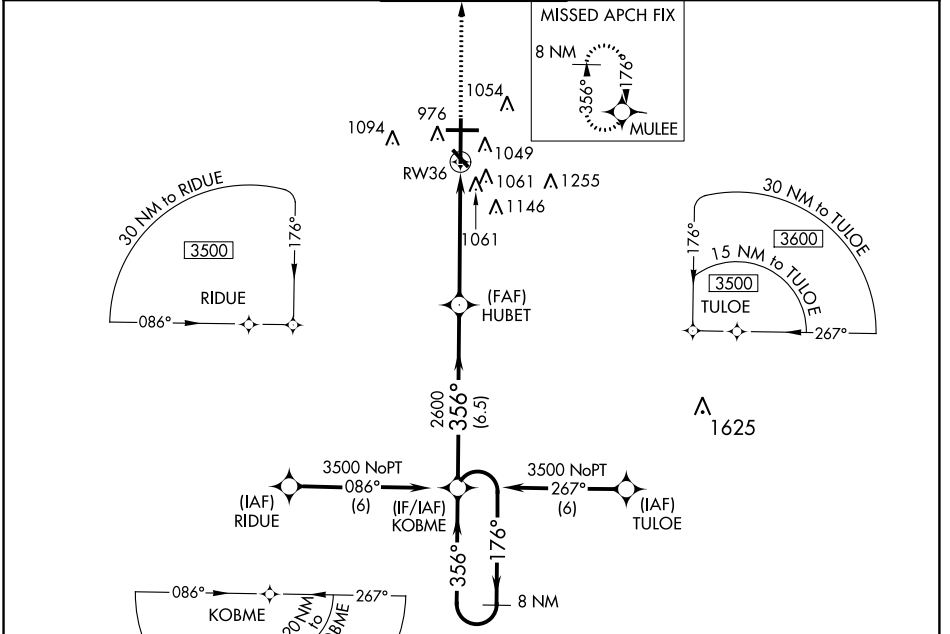
RNAV (GPS) RWY 36

FARGO/HECTOR INTL (FAR)

WAAS CH 50106 W36A	APP CRS 356°	Rwy Idg TDZE Apt Elev	9001 899 902
--	------------------------	-----------------------------	---

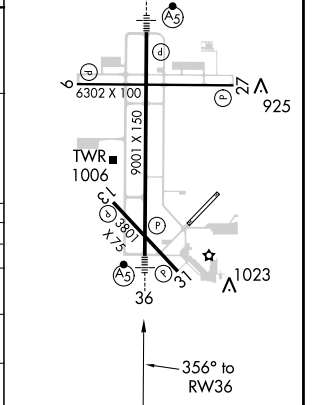
<p>▽ DME/DME RNP -0.3 NA. ⚠ Baro-VNAV NA below -1.6°C (4°F). ⚠ For inoperative MALSR, increase LPV Cat E visibility to RVR 4000, and increase LNAV/VNAV and LNAV Cat E visibility to 1¾ mile.</p>	<p>MALSR</p>  <p>MISSED APPROACH: Climb to 3500 direct MULEE and hold.</p>
--	---

ATIS 124.5 379.2	FARGO APP CON* 120.4 377.15	FARGO TOWER 133.8 290.4	GND CON 121.9 348.6	CLNC DEL 121.9 348.6
----------------------------	---------------------------------------	-----------------------------------	-------------------------------	--------------------------------



8 NM Holding Pattern	KOBME	VGSIs and RNAV glidepath not coincident (VGSIs Angle 3.00/TCH 71).	3500	MULEE
3500 ← 176°	→ 356°	HUBET	↑	⬠
GS 3.00°		2600	*1.4 NM to RW36	
TCH 55		*LNAV only		
	6.5 NM	3.7 NM	1.4 NM	

ELEV 902	D	TDZE 899
HIRL Rwy 18-36		
REIL Rwy 9 and 27		
MIRL Rwy 9-27 and 13-31		



CATEGORY	A	B	C	D	E
LPV DA	1150/24 251 (300-½)				
LNAV/VNAV DA	1360/50 461 (500-1)			1360/60 461 (500-¼)	
LNAV MDA	1420/24 521 (600-½)	1420/50 521 (600-1)	1420/60 521 (600-¼)	1500-2 598 (600-2)	1560-2 658 (700-2¼)
CIRCLING	1420-1½ 518 (600-1½)				

FARGO, NORTH DAKOTA
Orig 13010

46°55'N-96°49'W

FARGO/HECTOR INTL (FAR)

RNAV (GPS) RWY 36

NC-1, 07 FEB 2013 to 07 MAR 2013

NC-1, 07 FEB 2013 to 07 MAR 2013