

LOC I-FAR 110.3	APP CRS 356°	Rwy Idg 9001 THRE 899 Apt Elev 902
---------------------------	------------------------	--

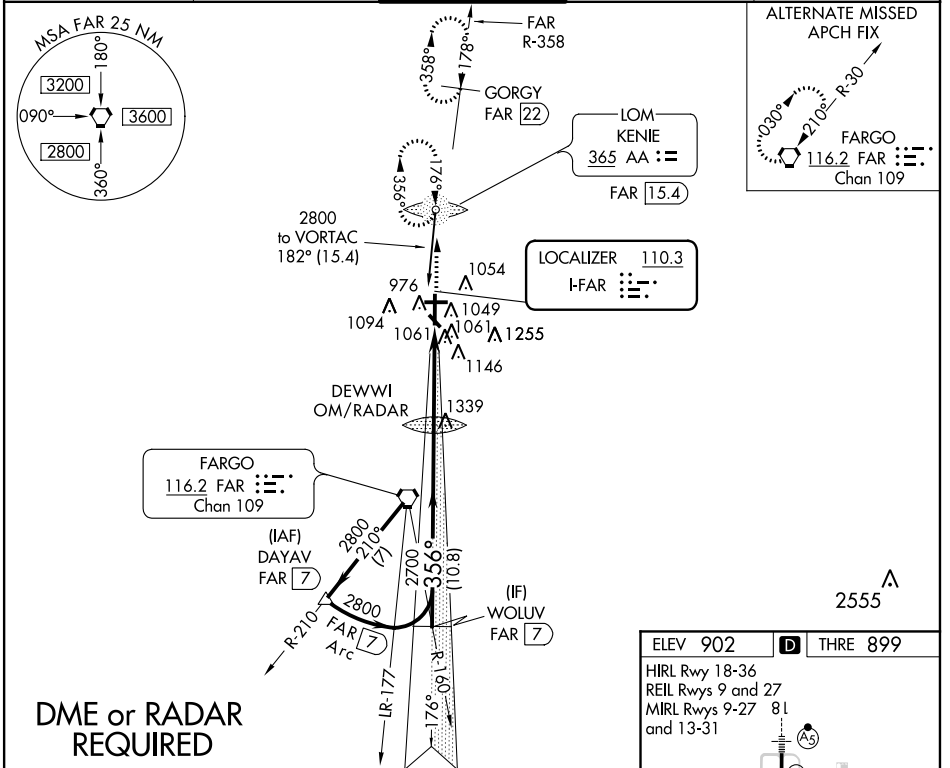
ILS or LOC RWY 36

FARGO/HECTOR INTL (F.A.R.)

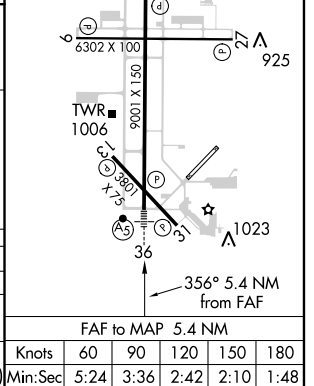
ADF or DME required. ** Visibility Cat A/B/C/D RVR 1800 authorized with the use of FD or AP or HUD to DA. ASR For inoperative MALS/R, increase S-ILS 36 Cat E visibility to RVR 4000 and S-LOC 36 Cat C/D/E visibility to 1%.

MALS/R
MISSED APPROACH: Climb to 2500 direct KENIE LOM and hold (DME aircraft climb to 4000 on FAR VORTAC R-358 to GORGY/22 DME and hold N, RT, 178° inbound, continue climb to 4000).

ATIS 124.5 379.2	FARGO APP CON* 120.4 377.15	FARGO TOWER 133.8 290.4	GND CON 121.9 348.6	CLNC DEL 121.9 348.6
----------------------------	---------------------------------------	-----------------------------------	-------------------------------	--------------------------------



Procedure Turn NA	WOLUV FAR 7					VGSI and ILS glidepath not coincident (VGSI Angle 3.00/TCH 71).					2500	AA
	2800					2706						
GS 3.00° TCH 55	356°					*2700					↑	⊙
	10.8 NM					5.4 NM						
CATEGORY	A	B	C	D	E							
S-ILS 36	**1099/24					200 (200-½)						
S-LOC 36	1360/24	461 (500-½)	1360/50			461 (500-1)						
CIRCLING	1380-1	478 (500-1)	1380-1½	1500-2	1560-2¼	478 (500-1½)	598 (600-2)	658 (700-2¼)				



NC-1, 07 FEB 2013 to 07 MAR 2013

NC-1, 07 FEB 2013 to 07 MAR 2013