

YERIN-FIVE DEPARTURE (YERIN5 • YERIN)

SHL-143 [USN]

FALLON NAS (VAN VOORHIS FLD)
FALLON, NEVADA

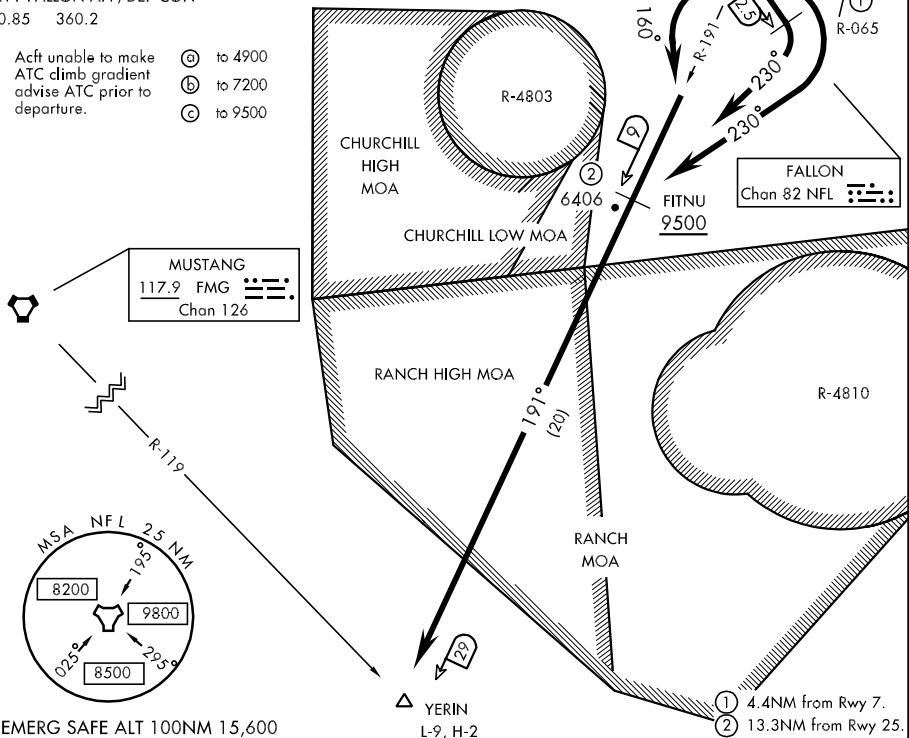
ATIS ★	Rwy	Knots	60	120	180	240	300	360	FALLON
370.925	* 7	ⓐ V/V(fpm)	225	450	675	900	1125	1350	✕
CLNC DEL	† 7	ⓒ V/V(fpm)	480	960	1440	1920	2400	2880	MUNI
353.55	*13L/R	ⓑ V/V(fpm)	245	490	735	980	1225	1470	•
GND CON	†13L/R	ⓒ V/V(fpm)	525	1050	1575	2100	2625	3150	4183
251.15	*25	ⓑ V/V(fpm)	250	500	750	1000	1250	1500	
NAVY FALLON TOWER ★	†25	ⓒ V/V(fpm)	620	1240	1860	2480	3100	3720	
119.25 340.2	†31L/R	ⓒ V/V(fpm)	310	620	930	1240	1550	1860	

NAVY FALLON APP/DEP CON
120.85 360.2

* Minimum Military and Civil † ATC Climb Rate

Acft unable to make ATC climb gradient advise ATC prior to departure.

- ⓐ to 4900
- ⓑ to 7200
- ⓒ to 9500



EMERG SAFE ALT 100NM 15,600

DEPARTURE ROUTE DESCRIPTION

TAKE-OFF RWY 7: Turn right heading 230° to join and fly NFL TACAN R-191 to YERIN. Cross FITNU at or above 9500.

TAKE-OFF RWY 13L/R: Climb on runway heading to NFL 2.5 DME, turn right heading 230° to join and fly NFL R-191 to YERIN. Cross FITNU at or above 9500.

TAKE-OFF RWY 25: Turn left heading 160° to join and fly NFL R-191 to YERIN. Cross FITNU at or above 9500.

TAKE-OFF RWY 31L/R: Climb on runway heading to NFL 1.5 DME, turn right heading 210° to join and fly NFL R-191 to YERIN. Cross NFL R-065 at or above 5200. Cross FITNU at or above 9500.