

FALLON, NEVADA

# RNAV (GPS) RWY 31L

AL-143 [USN]

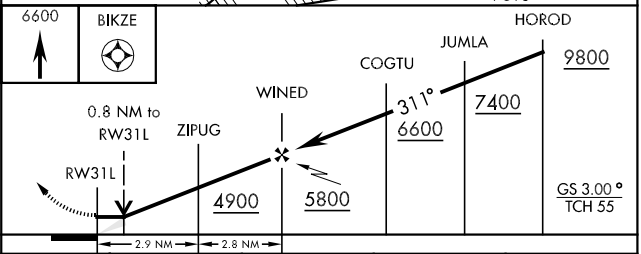
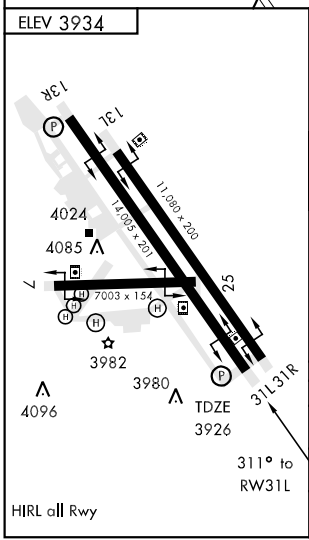
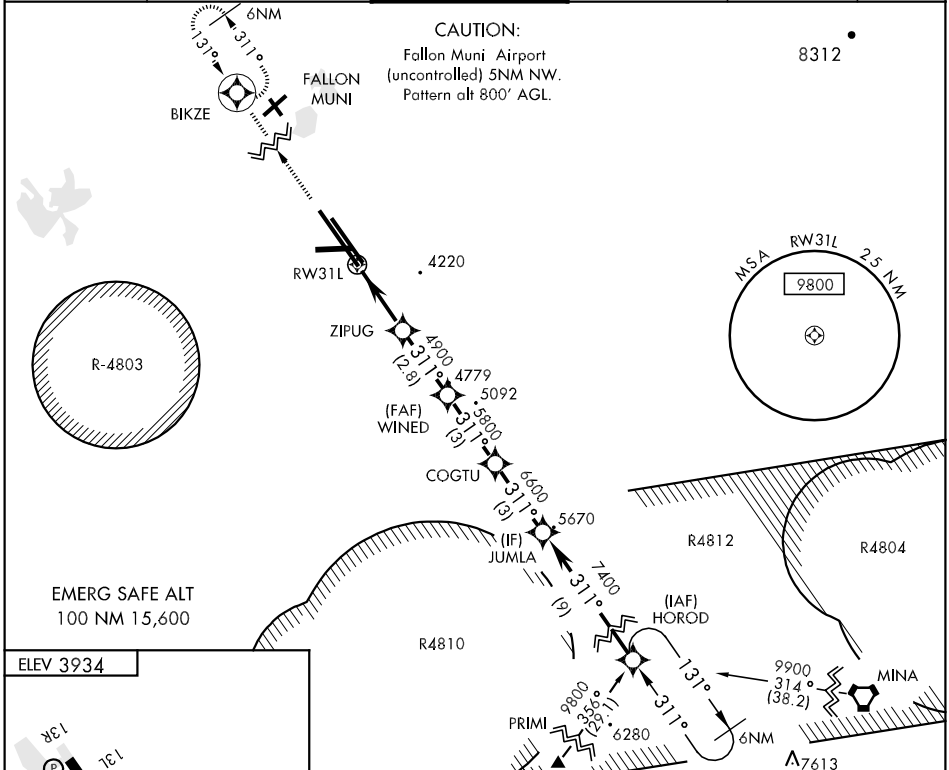
FALLON NAS (VAN VOORHIS FLD) (KNFL)

APCH CRS **311°**  
 Rwy ldg **14,005**  
 TDZE **3926**  
 Arpt Elev **3934**

▼ For uncompensated Baro-VNAV systems, LNAV/VNAV NA below -22°C (-9°F) or above 20°C (68°F)  
 DME/DME RNP-0.3 NA

MISSED APPROACH: Climb to 6600 direct BIKZE and hold.

ATIS ★ <b>370.925</b>	NAVY FALLON APP CON <b>120.85 360.2</b>	NAVY FALLON TOWER ★ <b>119.25 340.2</b>	GND CON <b>251.15</b>	CLNC DEL <b>353.55</b>	ASR/PAR
--------------------------	--	--	--------------------------	---------------------------	---------



CATEGORY	A	B	C	D
LNAV/VNAV DA		4180-1	254 (300-1)	
LNAV MDA		4240-1	314 (400-1)	
CIRCLING	4400-1	466 (500-1)	4400-1½ 466 (500-1½)	4520-2 586 (600-2)

FALLON, NEVADA  
 Orig 10266

39° 25'N-118° 42'W FALLON NAS (VAN VOORHIS FLD) (KNFL)

# RNAV (GPS) RWY 31L

SW-4, 07 FEB 2013 to 07 MAR 2013

SW-4, 07 FEB 2013 to 07 MAR 2013