

RNAV (GPS) RWY 13R

AL-143 [USN]

FALLON NAS (VAN VOORHIS FLD) (KNFL)

APCH CRS 131°	Rwy Idg 14,005
	TDZE 3934
	Arpt Elev 3934

▼ For uncompensated Baro-VNAV systems, LNAV/VNAV NA below -22°C (-9°F) or above 20°C (68°F)
DME/DME RNP-0.3 NA

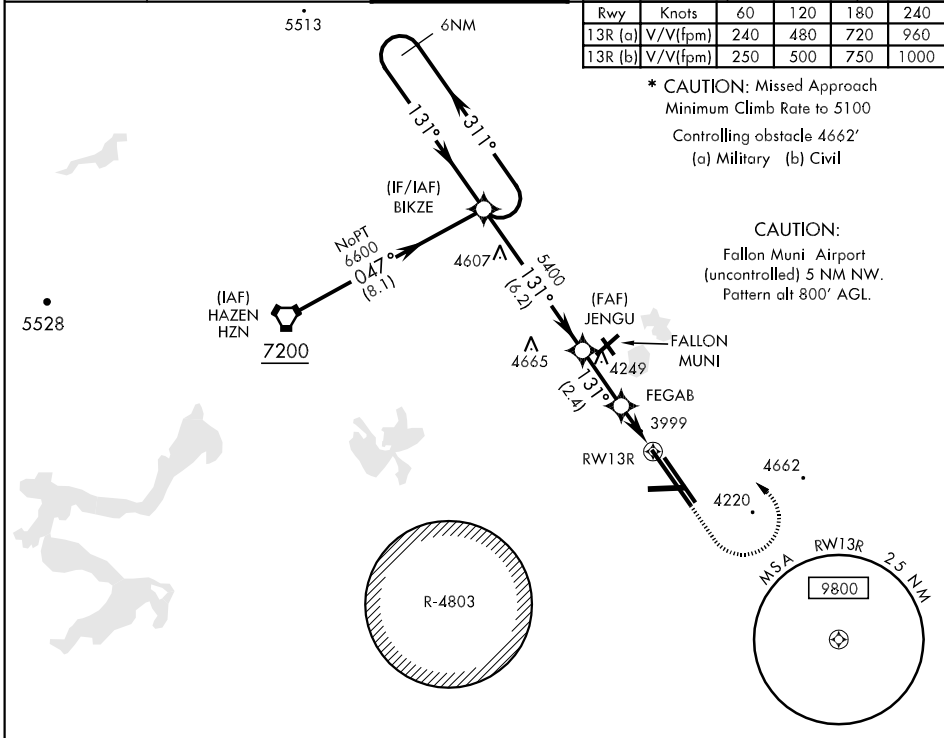
* MISSED APPROACH: Climb to 4000 then climbing left turn to 6600 direct BIKZE and hold.

ATIS ★ 370.925	NAVY FALLON APP CON 120.85 360.2	NAVY FALLON TOWER ★ 119.25 340.2	GND CON 251.15	CLNC DEL 353.55	ASR/PAR
--------------------------	--	--	--------------------------	---------------------------	---------

Rwy	Knots	60	120	180	240
13R (a)	V/V (fpm)	240	480	720	960
13R (b)	V/V (fpm)	250	500	750	1000

* CAUTION: Missed Approach
Minimum Climb Rate to 5100
Controlling obstacle 4662'
(a) Military (b) Civil

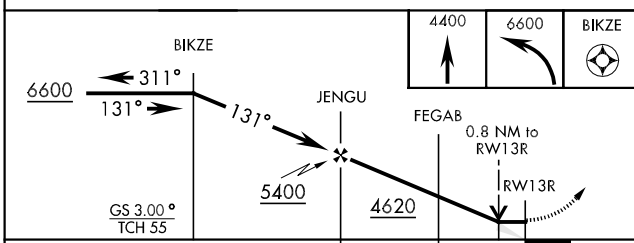
CAUTION:
Fallon Muni Airport
(uncontrolled) 5 NM NW.
Pattern alt 800' AGL.



SW-4, 07 FEB 2013 to 07 MAR 2013

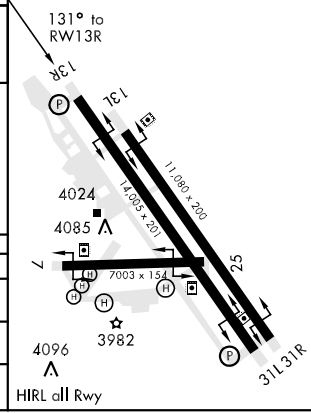
SW-4, 07 FEB 2013 to 07 MAR 2013

EMERG SAFE ALT 100 NM 15,600



ELEV 3934	TDZE 3934
-----------	-----------

CATEGORY	A	B	C	D
LNAV/VNAV DA		4200-1	266 (300-1)	
LNAV MDA		4260-1	326 (400-1)	
CIRCLING	4400-1	466 (500-1)	4400-1½ 466 (500-1½)	4520-2 586 (600-2)



RNAV (GPS) RWY 13R