


WAAS CH <b>60911</b> <b>W16B</b>	APP CRS <b>162°</b>	Rwy Idg <b>9010</b> THRE <b>563</b> Apt Elev <b>606</b>
--	------------------------	--

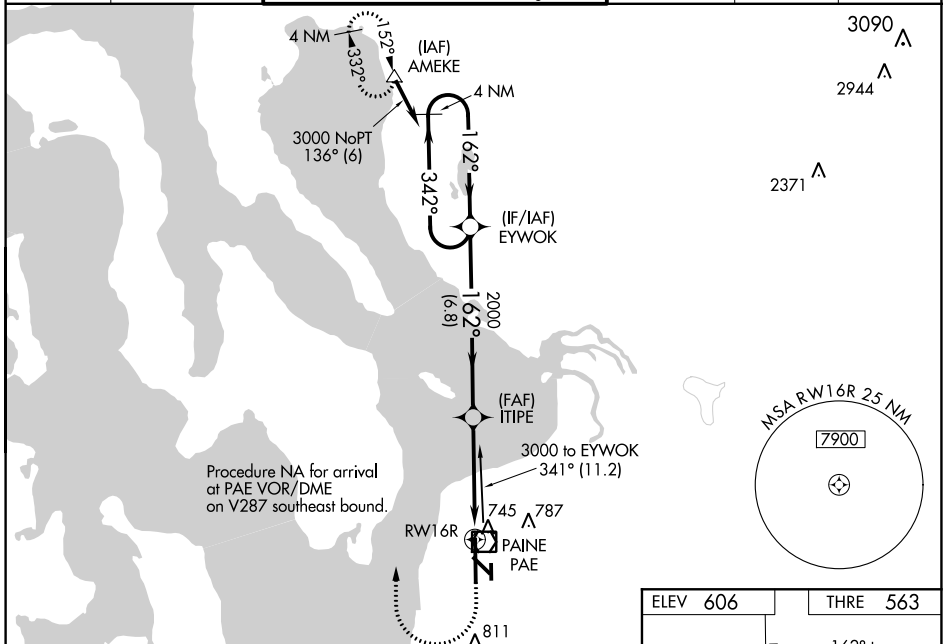
# RNAV (GPS) Y RWY 16R

EVERETT/SNOHOMISH COUNTY (PAINE FIELD) (P.A.E.)

**⚠** For uncompensated Baro-VNAV systems, LNAV/VNAV NA below -16°C (4°F) or above 54°C (130°F). DME/DME RNP-0.3 NA. When using Seattle-Tacoma Intl altimeter setting; for inoperative MALS, increase LPV Cats A and B visibility to RVR 4500. When local altimeter setting not received, use Seattle-Tacoma Intl altimeter setting and increase all DA 88 feet and all MDA 100 feet; increase LNAV/VNAV Cats A and B visibility to RVR 5000. Baro-VNAV and VDP NA when using Seattle-Tacoma Intl altimeter setting.

**MALS**  MISSED APPROACH: Climb to 1100 then climbing right turn to 3000 direct AMEKE and hold.

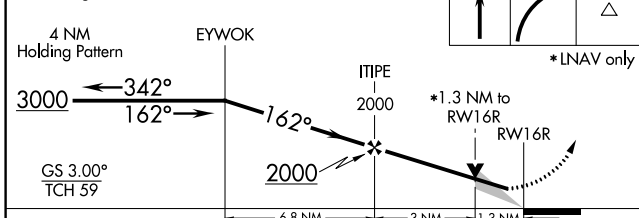
ATIS <b>128.65</b>	SEATTLE APP CON <b>128.5 306.9</b>	PAINE TOWER* (E of Rwy 16L-34R) (W of Rwy 16R-34L) <b>120.2 256.7 132.95 (CTAF) 256.7</b>	GND CON <b>121.8 339.8</b>	CLNC DEL <b>126.75</b>	UNICOM <b>122.95</b>
-----------------------	---------------------------------------	---	-------------------------------	---------------------------	-------------------------



NW-1, 07 FEB 2013 to 07 MAR 2013

NW-1, 07 FEB 2013 to 07 MAR 2013

VGSI and ILS glidepath not coincident (VGSI Angle 3.00/TCH 74).



CATEGORY	A	B	C	D
LPV DA	763/24	200 (200-½)		NA
LNAV/VNAV DA	937/40	374 (400-¾)		NA
LNAV MDA	1060/24	497 (500-½)		NA
CIRCLING	1100-1	494 (500-1)		NA

