

WAAS CH 65611 W34A	APP CRS 342°	Rwy Idg THRE Apt Elev	9010 578 606
--	------------------------	-----------------------------	---

RNAV (GPS) RWY 34L

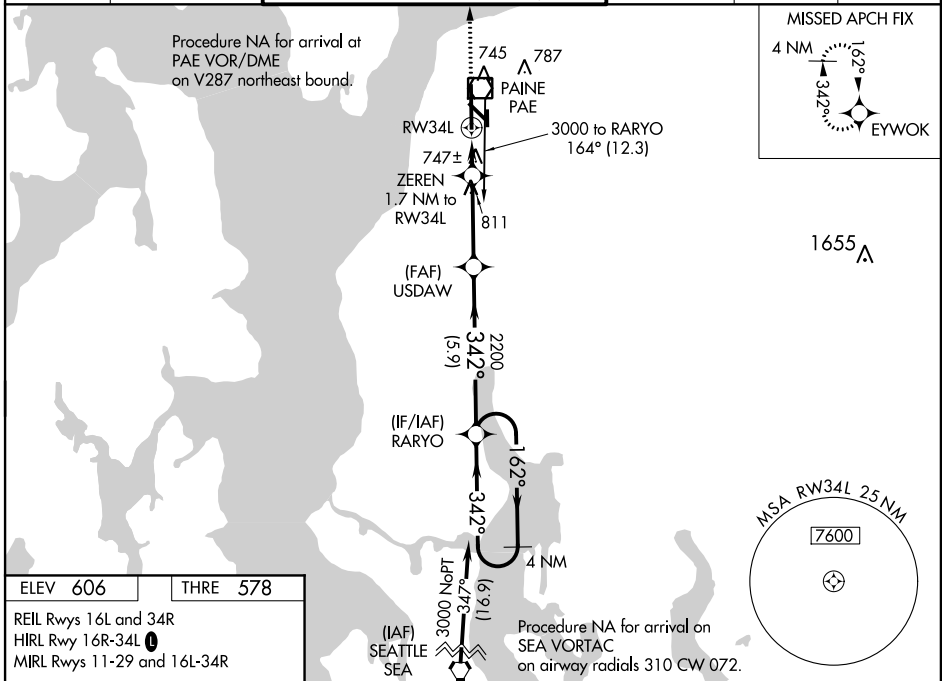
EVERETT/SNOHOMISH COUNTY (PAINE FIELD) (P.A.E.)

⚠ For uncompensated Baro-VNAV systems, LNAV/VNAV NA below -16°C (4°F) or above 40°C (104°F). DME/DME RNP-0.3 NA. Visibility reduction by helicopters NA. VDP and Baro-VNAV NA with Seattle-Tacoma Intl altimeter setting. When local altimeter setting not received, use Seattle-Tacoma Intl altimeter setting and increase all DA 88 feet and all MDA 100 feet; increase LPV all Cats visibility ¼ mile, LNAV/VNAV all Cats visibility ⅓ mile and LNAV Cat C and D visibility ¼ mile. When using Seattle-Tacoma Intl altimeter setting, for inoperative MALSF, increase LPV all Cats visibility to 1⅓ miles.



MISSED APPROACH:
Climb to 3000 direct
EYWOK and hold.

ATIS 128.65	SEATTLE APP CON 128.5 306.9	PAINE TOWER* (E of Rwy 16L-34R) 120.2 256.7 (W of Rwy 16R-34L) 132.95 (CTAF) 256.7	GND CON 121.8 339.8	CLNC DEL 126.75	UNICOM 122.95
-----------------------	---------------------------------------	---	-------------------------------	---------------------------	-------------------------

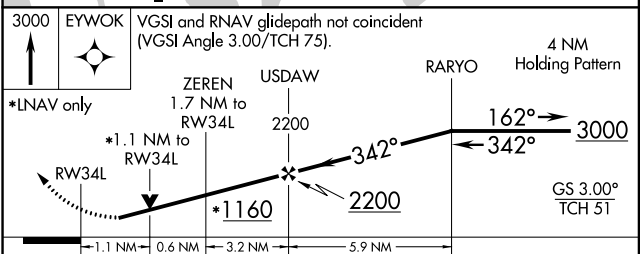
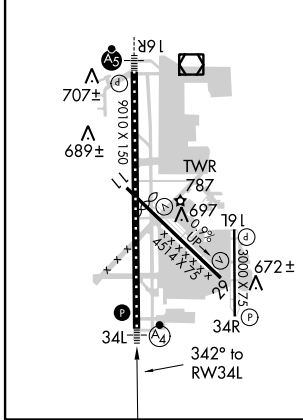


NW-1, 07 FEB 2013 to 07 MAR 2013

NW-1, 07 FEB 2013 to 07 MAR 2013

ELEV 606	THRE 578
----------	----------

REIL Rws 16L and 34R
HIRL Rwy 16R-34L
MIRL Rws 11-29 and 16L-34R



CATEGORY	A	B	C	D
LPV DA		889-¾	311 (300-¾)	
LNAV/ VNAV DA		1036-1¼	458 (500-1¼)	
LNAV MDA	1000-¾	422 (400-¾)	1000-1	422 (400-1)
CIRCLING	1100-1	494 (500-1)	1100-1½ 494 (500-1½)	1160-2 554 (600-2)