

LOC I-PAE 109.3	APP CRS 162°	Rwy Idg THRE Apt Elev	9010 563 606
---------------------------	------------------------	-----------------------------	---

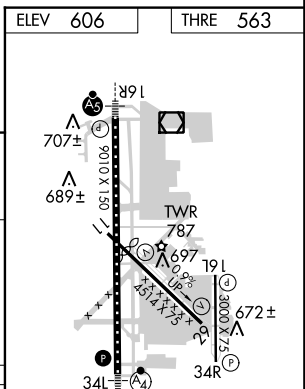
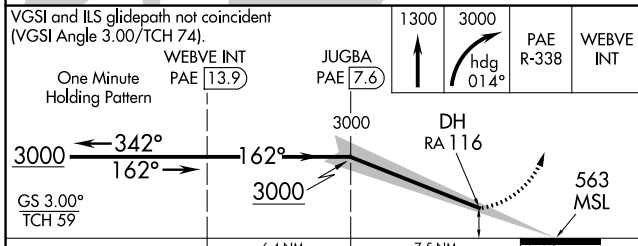
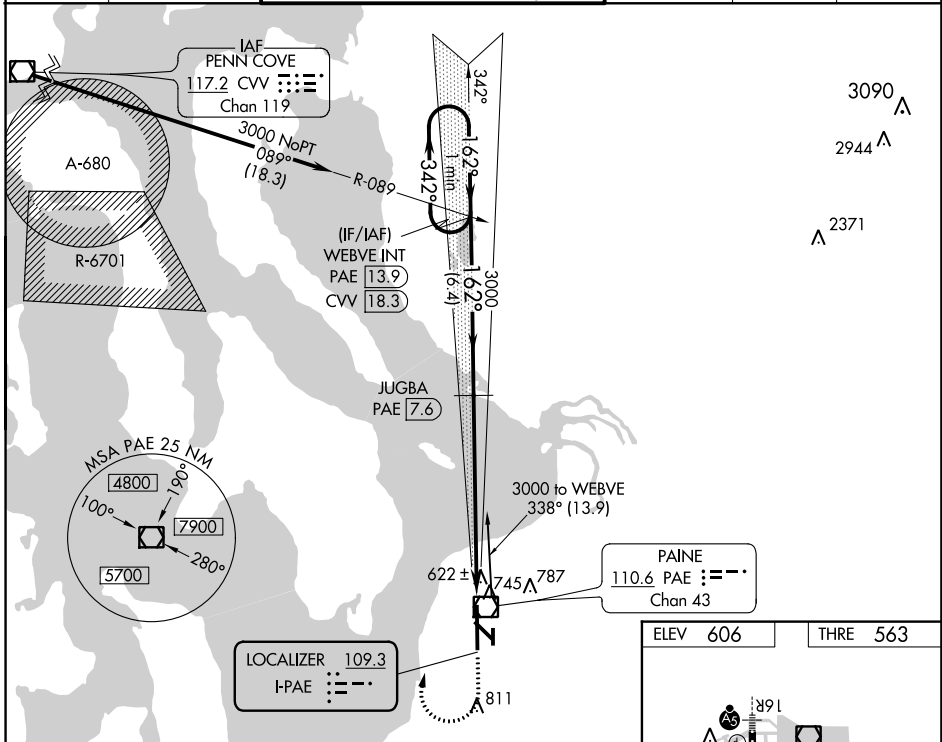
ILS Z RWY 16R (SA CAT II)

EVERETT/SNOHOMISH COUNTY (PAINE FIELD) (PAE)

⚠ DME from PAE VOR/DME. Simultaneous reception of I-PAE and PAE DME required. Reduced lighting requires specific OPSPEC, MSPEC or LOA approval and use of autoland or HUD to touchdown. NA when control tower is closed.

MALS MISSED APPROACH: Climb to 1300 then climbing right turn to 3000 on heading 014° and PAE VOR/DME R-338 to WEBVE INT/PAE 13.9 DME and hold.

ATIS 128.65	SEATTLE APP CON 128.5 306.9	PAINE TOWER* (E of Rwy 16L-34R) (W of Rwy 16R-34L) 120.2 256.7 132.95 (CTAF) 256.7		GND CON 121.8 339.8	CLNC DEL 126.75	UNICOM 122.95
-----------------------	---------------------------------------	---	--	-------------------------------	---------------------------	-------------------------



CATEGORY	A	B	C	D
S-ILS 16R	RA 116/16 100 DA 663			

SA CATEGORY II ILS-SPECIAL AIRCREW & AIRCRAFT CERTIFICATION REQUIRED

HIRL Rwy 16R-34L
REIL Rwy 16L and 34R
MIRL Rwy 11-29 and 16L-34R

NW-1, 07 FEB 2013 to 07 MAR 2013

NW-1, 07 FEB 2013 to 07 MAR 2013