


LOC I-PAE <b>109.3</b>	APP CRS <b>162°</b>	Rwy Idg <b>9010</b> THRE <b>563</b> Apt Elev <b>606</b>
---------------------------	------------------------	--

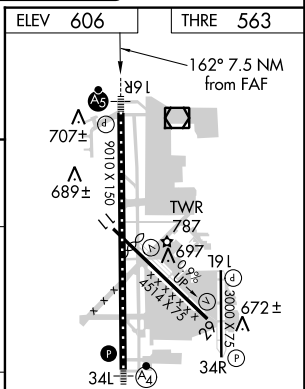
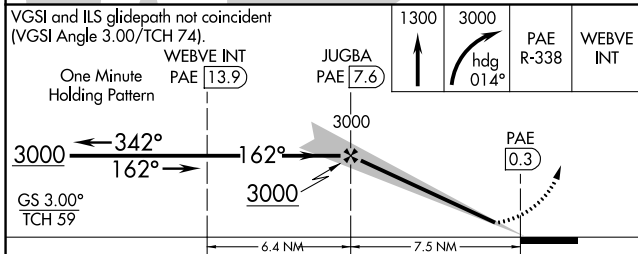
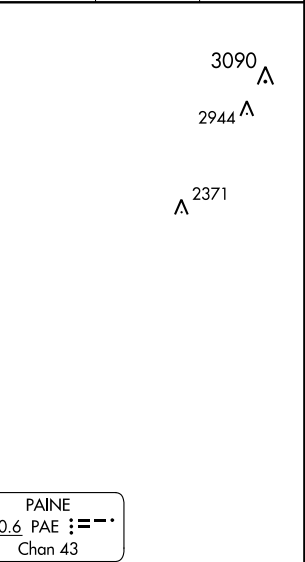
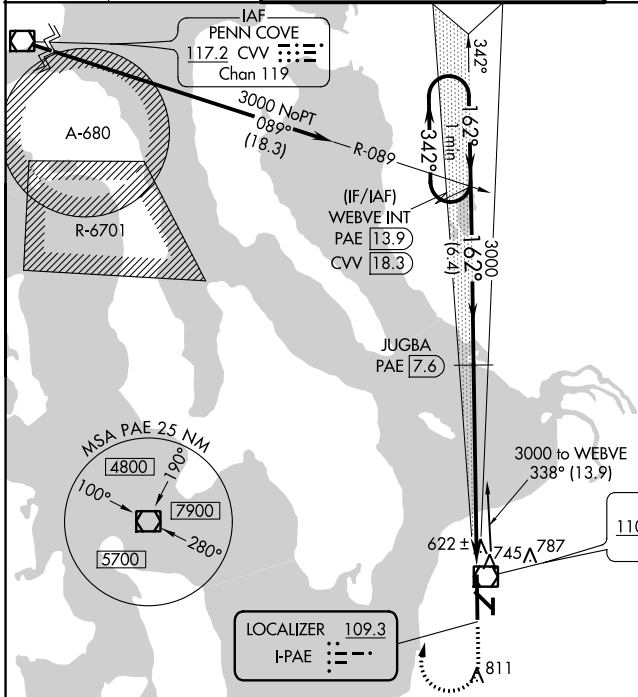
# ILS or LOC/DME Z RWY 16R

EVERETT/SNOHOMISH COUNTY (PAINE FIELD) (P.A.E.)

**⚠** When local altimeter setting not received, use Seattle-Tacoma Intl altimeter setting and increase all DA to 88 feet and all MDA 100 feet; increase S-LOC 16R Cat C and D visibility to RVR 6000, increase Circling Cat C visibility to 1½ miles.  
 When using Seattle-Tacoma Intl altimeter setting; for inoperative MALSRS, increase S-ILS 16R all Cats visibility to RVR 4500. DME from PAE VOR/DME. Simultaneous reception of I-PAE and PAE DME required.  
**\*\*RVR 1800 authorized with use of FD or AP or HUD to DA.**

**MALSRS**  
  
**MISSED APPROACH:** Climb to 1300 then climbing right turn to 3000 on heading 014° and PAE VOR/DME R-338 to WEBVE INT/PAE 13.9 DME and hold.

ATIS <b>128.65</b>	SEATTLE APP CON <b>128.5 306.9</b>	PAINE TOWER* (E of Rwy 16L-34R) <b>120.2 256.7</b> (W of Rwy 16R-34L) <b>132.95 (CTAF) 0 256.7</b>	GND CON <b>121.8 339.8</b>	CLNC DEL <b>126.75</b>	UNICOM <b>122.95</b>
-----------------------	---------------------------------------	--	-------------------------------	---------------------------	-------------------------



CATEGORY	A	B	C	D
S-ILS 16R		**763/24	200 (200-½)	
S-LOC 16R	1020/24	457 (500-½)	1020/45	457 (500-¾)
CIRCLING	1100-1	494 (500-1)	1100-1½ 494 (500-1½)	1160-2 554 (600-2)

HIRL Rwy 16R-34L  
 REIL Rws 16L and 34R  
 MIRL Rws 11-29 and 16L-34R

NW-1, 07 FEB 2013 to 07 MAR 2013

NW-1, 07 FEB 2013 to 07 MAR 2013