


LOC I-PAE <b>109.3</b>	APP CRS <b>162°</b>	Rwy Idg THRE Apt Elev	<b>9010</b> <b>563</b> <b>606</b>
---------------------------	------------------------	-----------------------------	---

# ILS or LOC/DME Y RWY 16R

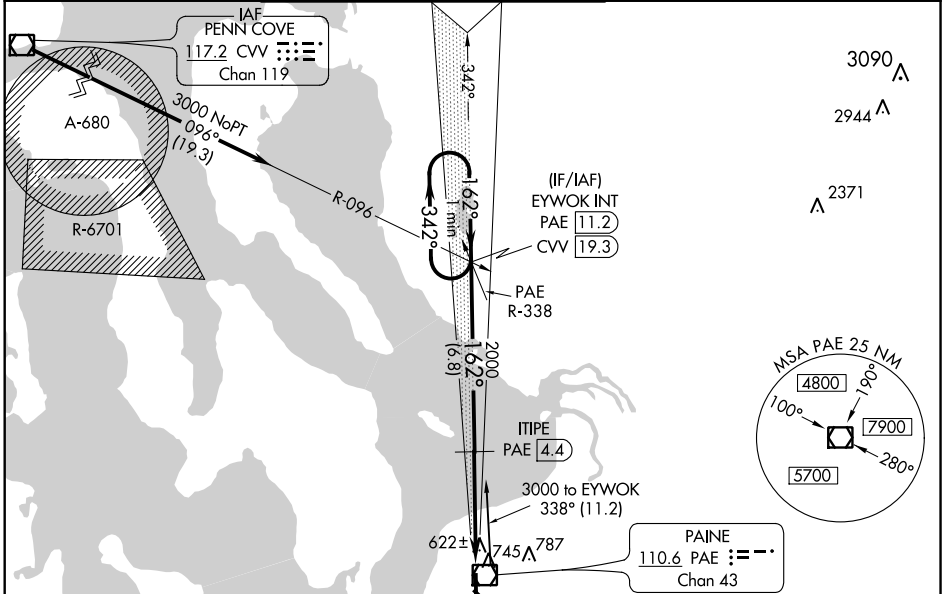
EVERETT/SNOHOMISH COUNTY (PAINE FIELD) (P.A.E.)

**⚠** When local altimeter setting not received, use Seattle-Tacoma Intl altimeter setting and increase all DA 88 feet and all MDA 100 feet. When using Seattle-Tacoma Intl altimeter setting; for inoperative MALS/R, increase S-ILS 16R all Cats visibility to RVR 4500. DME from PAE VOR/DME. Simultaneous reception of I-PAE and PAE DME required.

**MALS/R** 

**MISSED APPROACH:** Climb to 1300 then climbing right turn to 3000 on heading 014° and PAE VOR/DME R-338 to EYWOK INT/PAE VOR/DME 11.2 DME and hold.

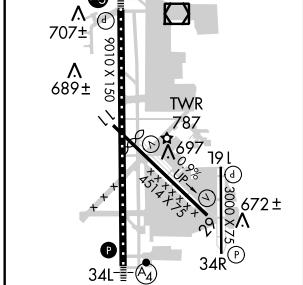
ATIS <b>128.65</b>	SEATTLE APP CON <b>128.5 306.9</b>	PAINE TOWER* (E of Rwy 16L-34R) (W of Rwy 16R-34L) <b>120.2 256.7 132.95 (CTAF) 0 256.7</b>	GND CON <b>121.8 339.8</b>	CLNC DEL <b>126.75</b>	UNICOM <b>122.95</b>
-----------------------	---------------------------------------	---	-------------------------------	---------------------------	-------------------------



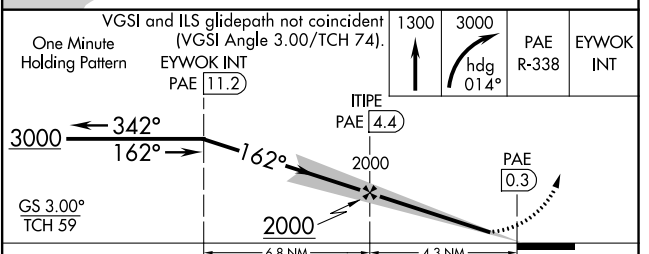
NW-1, 07 FEB 2013 to 07 MAR 2013

NW-1, 07 FEB 2013 to 07 MAR 2013

ELEV 606	THRE 563
----------	----------



HIRL Rwy 16R-34L  
REIL Rwys 16L and 34R  
MIRL Rwys 11-29 and 16L-34R



CATEGORY	A	B	C	D
S-ILS 16R	763/24	200 (200-½)		NA
S-LOC 16R	940/24	377 (400-½)		NA
CIRCLING	1100-1	494 (500-1)		NA