

EUGENE, OREGON

AL-140 (FAA)

11237

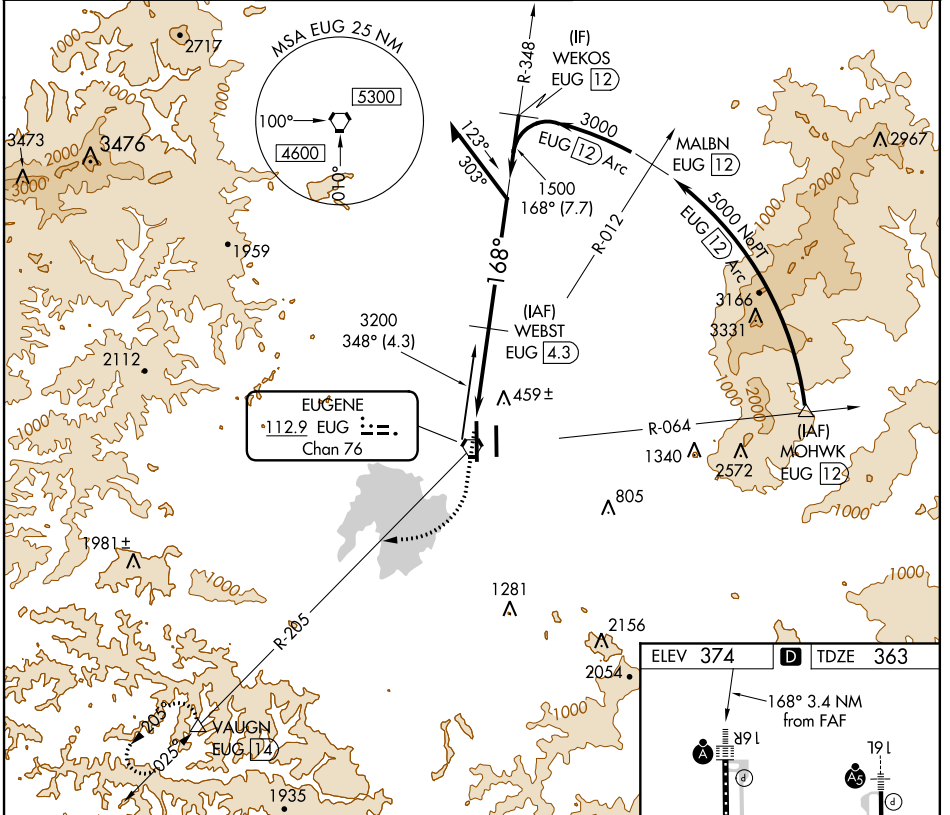
VORTAC EUG 112.9 Chan 76	APP CRS 168°	Rwy Idg 8009 TDZE 363 Apt Elev 374
--	------------------------	---

VOR/DME or TACAN Rwy 16R

EUGENE/MAHLON SWEET FIELD (EUG)

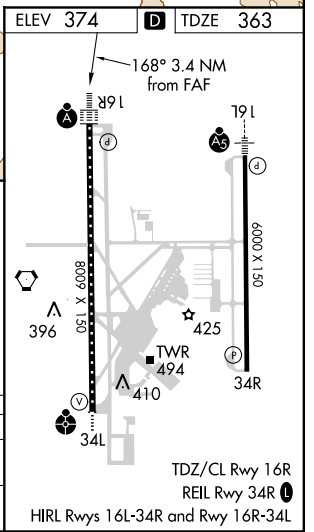
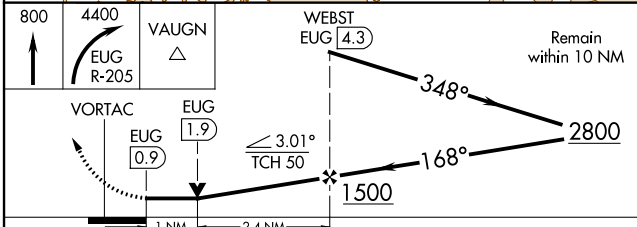
	For inoperative ALSF-2, increase S-16R Cat D visibility to RVR 6000.		MISSED APPROACH: Climb to 800 then climbing right turn to 4400 on EUG VORTAC R-205 to VAUGN/EUG 14 DME and hold. Continue climb in hold to 4400.

ATIS 125.225	CASCADE APP CON 119.6 348.7	EUGENE TOWER * 118.9 (CTAF) 0 371.9 (Rwy 16R/34L) 124.15 371.9 (Rwy 16L/34R)	GND CON 121.7 269.5	CLNC DEL 121.7 269.5	UNICOM 122.95
------------------------	---------------------------------------	---	-------------------------------	--------------------------------	-------------------------



NW-1, 07 FEB 2013 to 07 MAR 2013

NW-1, 07 FEB 2013 to 07 MAR 2013



CATEGORY	A	B	C	D
S-16R	720/24 357 (400-½)			720/50 357 (400-1)
CIRCLING	800-1 426 (500-1)	840-1 466 (500-1)	840-1½ 466 (500-½)	940-2 566 (600-2)

EUGENE, OREGON
Amdt 5 23SEP10

EUGENE/MAHLON SWEET FIELD (EUG)
44°07'N-123°13'W
VOR/DME or TACAN Rwy 16R

TDZ/CL Rwy 16R
REIL Rwy 34R

HIRL Rwy 16L-34R and Rwy 16R-34L