

WAAS CH <b>81900</b> <b>W34B</b>	APP CRS <b>343°</b>	Rwy Idg THRE Apt Elev	<b>6000</b> <b>374</b> <b>374</b>
--	------------------------	-----------------------------	---

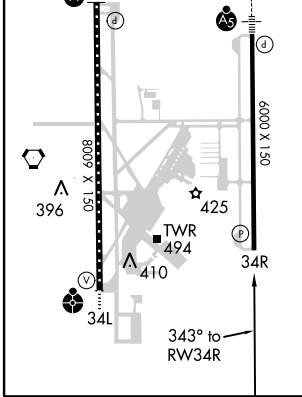
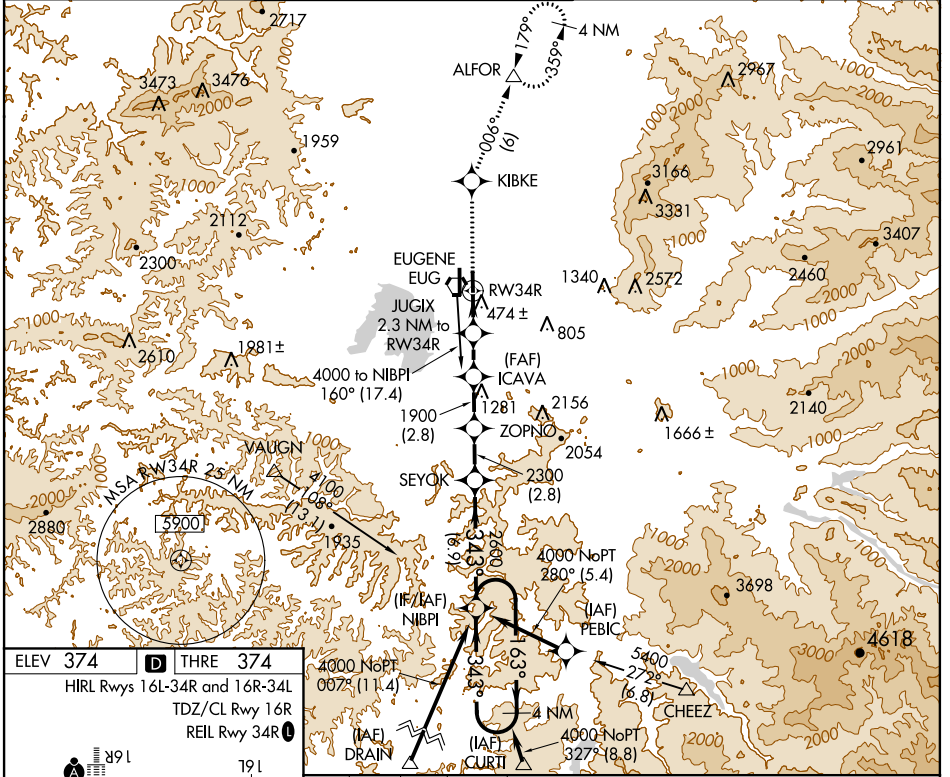
# RNAV (GPS) Y RWY 34R

EUGENE/ MAHLON SWEET FIELD (EUG)

▼ For uncompensated Baro-VNAV systems, LNAV/VNAV NA below -1.5°C (4°F) or above 41°C (106°F).  
DME/DME RNP-0.3 NA.

MISSED APPROACH: Climb to 3000 direct KIBKE and on track 006° to ALFOR and hold.

ATIS <b>125.225</b>	CASCADE APP CON <b>119.6 348.7</b>	EUGENE TOWER ★ <b>118.9</b> (CTAF) <b>0 371.9</b> (Rwy 16R/34L) <b>124.15 371.9</b> (Rwy 16L/34R)	GND CON <b>121.7 269.5</b>	CLNC DEL <b>121.7 269.5</b>	UNICOM <b>122.95</b>
------------------------	---------------------------------------	---	-------------------------------	--------------------------------	-------------------------



ELEV 374	THRE 374	HIRL Rws 16L-34R and 16R-34L		TDZ/CL Rwy 16R		REIL Rwy 34R	