

WAAS CH 45600 <b>W34A</b>	APP CRS <b>343°</b>	Rwy Idg THRE Apt Elev	<b>8009</b> <b>366</b> <b>374</b>
---------------------------------	------------------------	-----------------------------	---

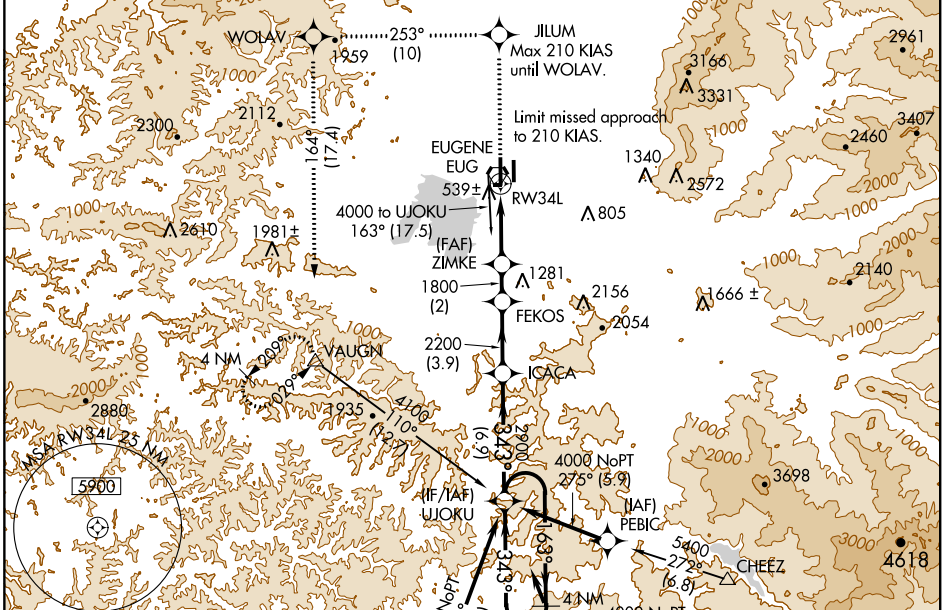
# RNAV (GPS) Y RWY 34L

EUGENE/ MAHLON SWEET FIELD (EUG)

**⚠** For uncompensated Baro-VNAV systems, LNAV/VNAV NA below -15°C (4°F) or above 40°C (104°F). DME/DME RNP-0.3 NA. Visibility reduction by helicopters NA. For inoperative ODALS increase LPV visibility to RVR 4000 all Cats, LNAV/VNAV visibility to 1½ all Cats, LNAV Cat A and B to RVR 5000. Inoperative table does not apply to LNAV Cat C.

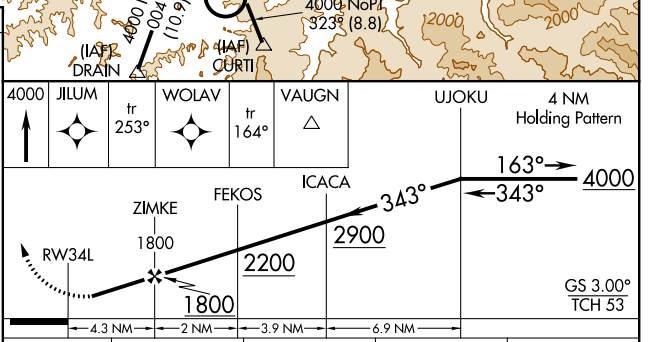
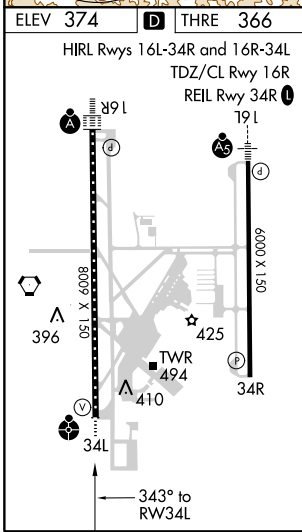
**ODALS** MISSED APPROACH: Climb to 4000 direct JILUM and on track 253° to WOLAV and on track 164° to VAUGN and hold.

ATIS <b>125.225</b>	CASCADE APP CON <b>119.6 348.7</b>	EUGENE TOWER ★ <b>118.9 (CTAF) 0 371.9 (Rwy 16R/34L)</b> <b>124.15 371.9 (Rwy 16L/34R)</b>	GND CON <b>121.7 269.5</b>	CLNC DEL <b>121.7 269.5</b>	UNICOM <b>122.95</b>
------------------------	---------------------------------------	--	-------------------------------	--------------------------------	-------------------------



NW-1, 07 FEB 2013 to 07 MAR 2013

NW-1, 07 FEB 2013 to 07 MAR 2013



CATEGORY	A	B	C	D
LPV DA		617/35	250 (300-¾)	
LNAV/VNAV DA		827-1½	461 (500-1½)	
LNAV MDA	1100/40	734 (800-¾)	1100-2	734 (800-2)
CIRCLING	1100-1	726 (800-1)	1100-2 726 (800-2)	1100-2½ 726 (800-2½)