


WAAS CH <b>86518</b> <b>W16B</b>	APP CRS <b>163°</b>	Rwy Idg THRE <b>360</b> Apt Elev <b>374</b>	<b>8009</b>
--	------------------------	---	-------------

# RNAV (GPS) Y RWY 16R

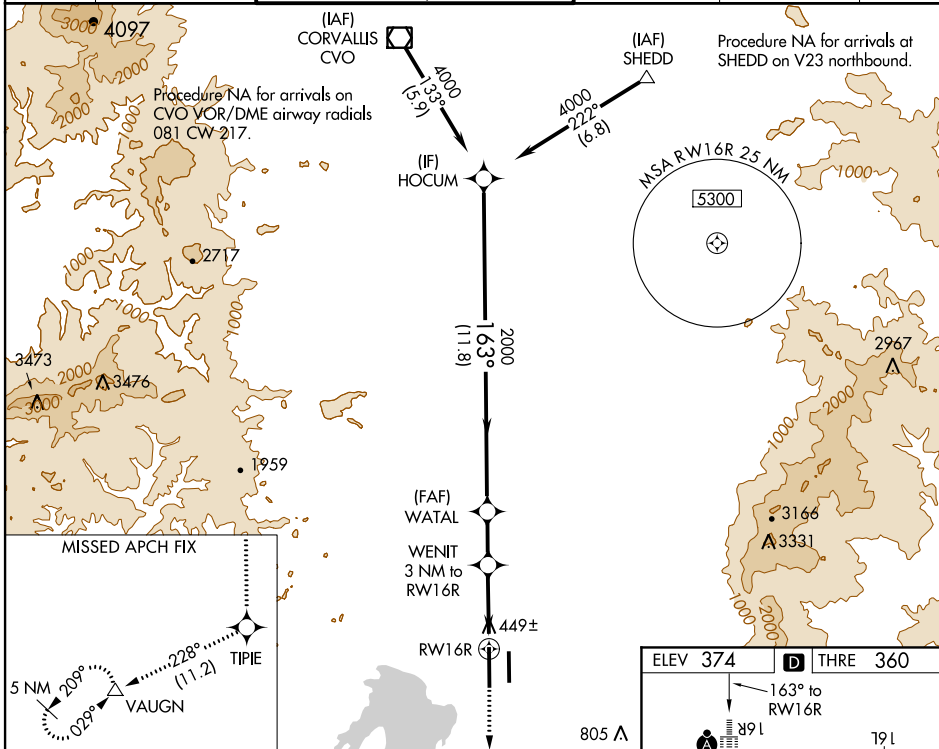
EUGENE/MAHLON SWEET FIELD (EUG)

**▽** For uncompensated Baro-VNAV systems, LNAV/VNAV NA below -15°C (5°F) or above 41°C (105°F). DME/DME RNP-0.3 NA.

**ALSF-2** 

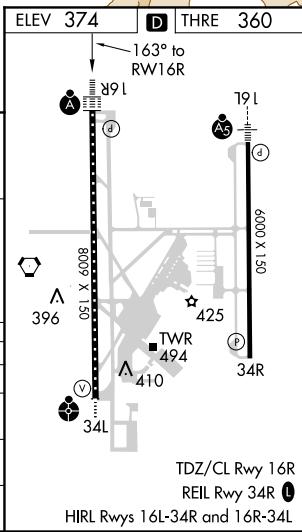
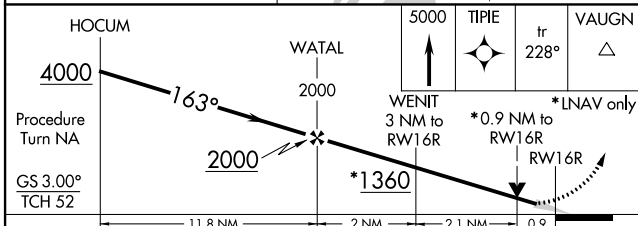
**MISSED APPROACH:** Climb to 5000 direct TIPIE and on track 228° to VAUGN and hold, continue climb-in-hold to 5000.

ATIS <b>125.225</b>	CASCADE APP CON <b>119.6 348.7</b>	EUGENE TOWER * <b>118.9</b> (CTAF) <b>0 371.9</b> (Rwy 16R/34L) <b>124.15 371.9</b> (Rwy 16L/34R)	GND CON <b>121.7 269.5</b>	CLNC DEL <b>121.7 269.5</b>	UNICOM <b>122.95</b>
------------------------	---------------------------------------	---	-------------------------------	--------------------------------	-------------------------



NW-1, 07 FEB 2013 to 07 MAR 2013

NW-1, 07 FEB 2013 to 07 MAR 2013



CATEGORY	A	B	C	D
LPV DA		560/24	200 (200-½)	
LNAV/VNAV DA		738/40	378 (400-¾)	
LNAV MDA	700/24	340 (400-½)	700/26	340 (400-¾)
CIRCLING	800-1 426 (500-1)	840-1 466 (500-1)	840-1½ 466 (500-1½)	940-2 566 (600-2)

TDZ/CL Rwy 16R  
REIL Rwy 34R  
HIRL Rwy 16L-34R and 16R-34L