

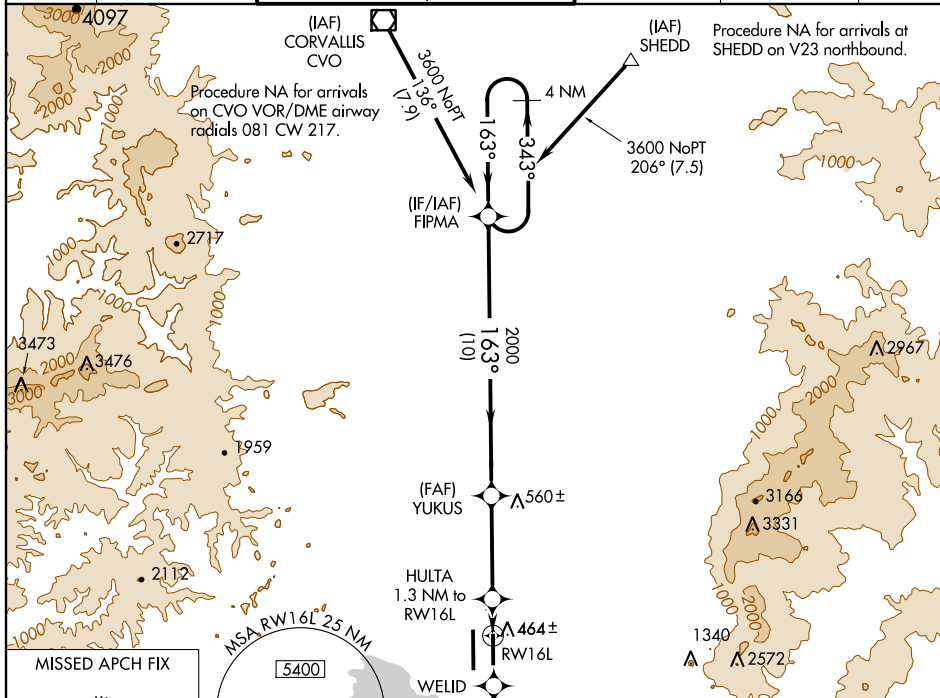
RNAV (GPS) Y RWY 16L

EUGENE/MAHLON SWEET FIELD (EUG)

WAAS CH 81827 W16A	APP CRS 163°	Rwy ldg THRE Apt Elev 6000 363 374
----------------------------------------	------------------------	------------------------------------------------------------------------

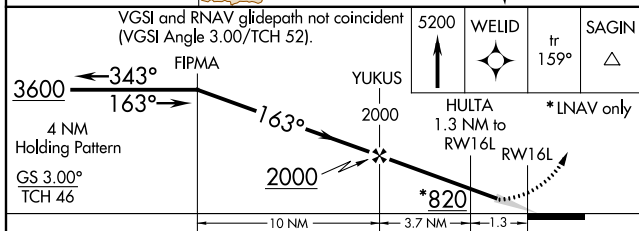
▼ For uncompensated Baro-VNAV systems, LNAV/VNAV NA below -15°C (5°F) or above 41°C (105°F). DME/DME RNP-0.3 NA. For inoperative MALS R increase LNAV Cat C and D visibility to 1. **MALS R** MISSED APPROACH: Climb to 5200 direct WELID and on track 159° to SAGIN and hold, continue climb-in-hold to 5200.

ATIS 125.225	CASCADE APP CON 119.6 348.7	EUGENE TOWER * 118.9 (CTAF) 371.9 (Rwy 16R/34L) 124.15 371.9 (Rwy 16L/34R)	GND CON 121.7 269.5	CLNC DEL 121.7 269.5	UNICOM 122.95
------------------------	---------------------------------------	-------------------------------------------------------------------------------------------------------	-------------------------------	--------------------------------	-------------------------



NW-1, 07 FEB 2013 to 07 MAR 2013

NW-1, 07 FEB 2013 to 07 MAR 2013



CATEGORY	LPV DA	563-½ 200 (200-½)		
	LNAV/VNAV DA	762-¾ 399 (400-¾)		
	LNAV MDA	720-½ 357 (400-½)	720-⅝ 357 (400-⅝)	
	CIRCLING	800-1 426 (500-1)	840-1 466 (500-1)	840-1½ 466 (500-1½)
				940-2 566 (600-2)

