

RNAV (RNP) Z RWY 34R

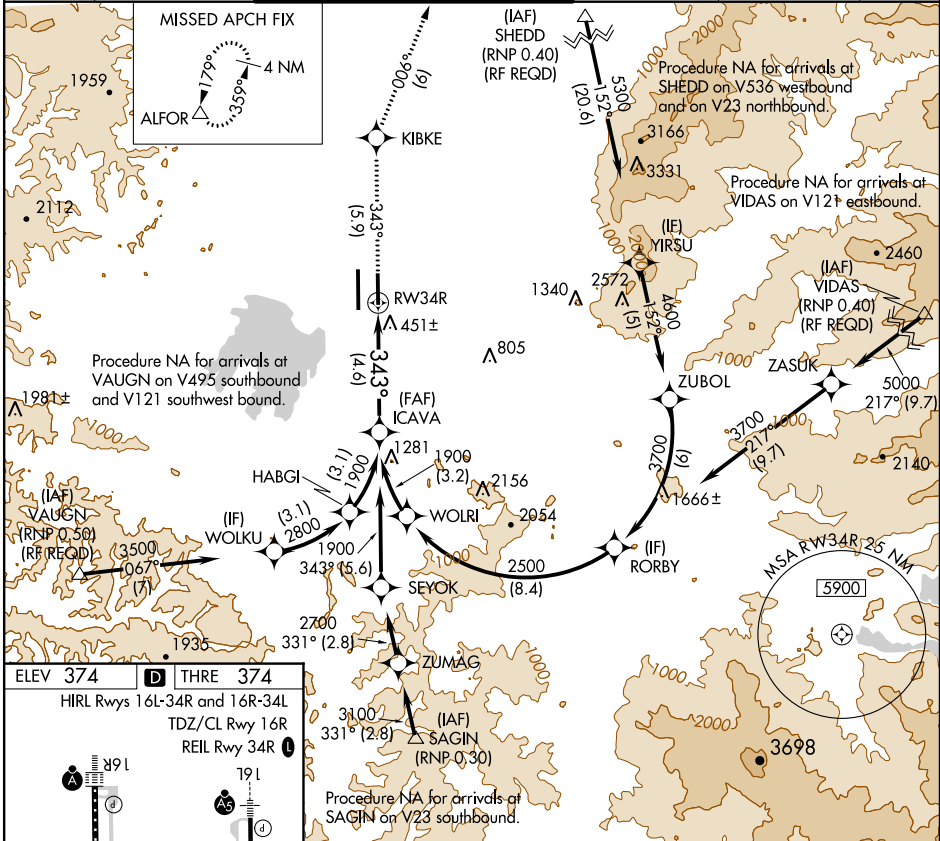
EUGENE/ MAHLON SWEET FIELD (EUG)

APP CRS 343°	Rwy Idg 6000
	THRE 374
	Apt Elev 374

GPS required. For uncompensated Baro-VNAV systems, procedure NA below -15°C (4°F) or above 41°C (106°F).

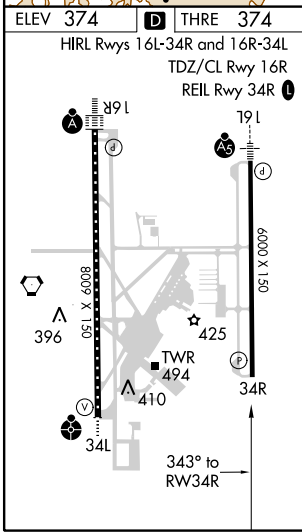
MISSED APPROACH: Climb to 3000 on track 343° to KIBKE and track 006° to ALFOR and hold.

ATIS 125.225	CASCADE APP CON 119.6 348.7	EUGENE TOWER * 118.9 (CTAF) 0 371.9 (Rwy 16R/34L) 124.15 371.9 (Rwy 16L/34R)	GND CON 121.7 269.5	CLNC DEL 121.7 269.5	UNICOM 122.95
------------------------	---------------------------------------	--	-------------------------------	--------------------------------	-------------------------



NW-1, 07 FEB 2013 to 07 MAR 2013

NW-1, 07 FEB 2013 to 07 MAR 2013



3000	KIBKE	tr 006°	ALFOR	ICAVA
tr 343°				1900
See Planview for multiple IF locations.				
RW34R				
4.6 NM				
GP 3.00° TCH 50				
CATEGORY	A	B	C	D
RNP 0.30 DA	766-1¼ 392 (400-1¼)			
AUTHORIZATION REQUIRED				