

APP CRS	Rwy Idg	<b>8009</b>
<b>343°</b>	THRE	<b>366</b>
	Apt Elev	<b>374</b>

# RNAV (RNP) Z RWY 34L

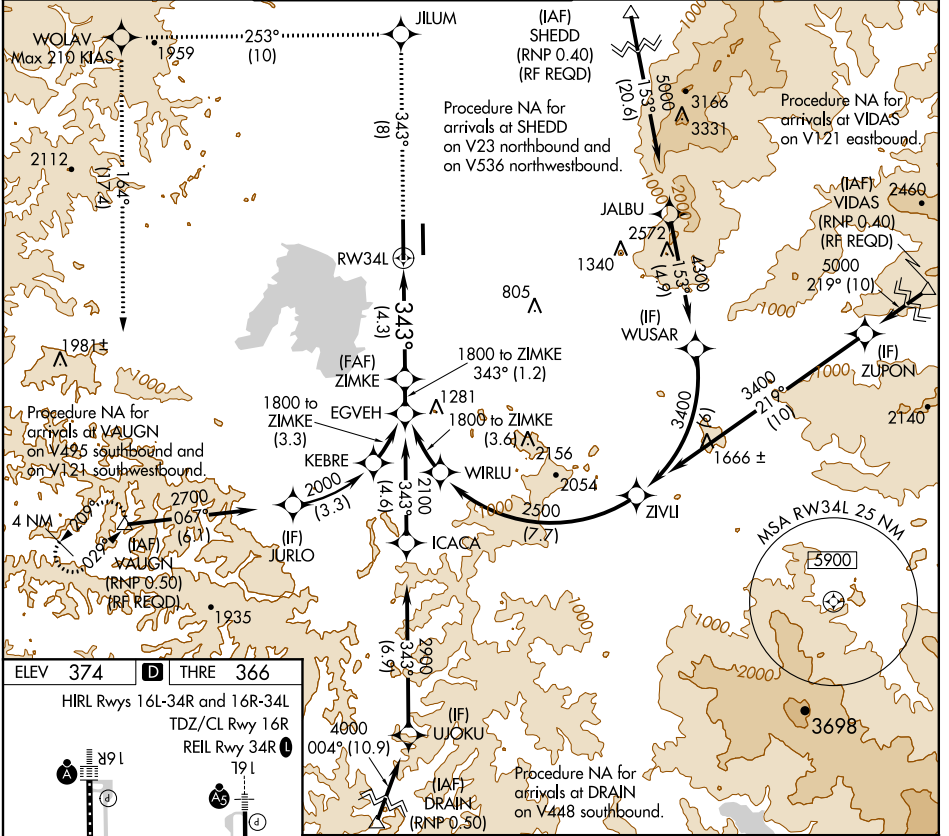
EUGENE/ MAHLON SWEET FIELD (EUG)

▼ For uncompensated Baro-VNAV systems, procedure NA below -9°C (15°F) or above 41°C (106°F). For inoperative ODALS, increase RNP 0.30 DA visibility all Cuts to 1½. GPS required.

ODALS

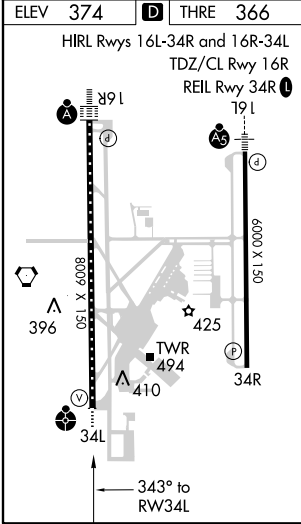
MISSED APPROACH: Climb to 4000 on track 343° to JILUM and on track 253° to WOLAV and on track 164° to VAUGN and hold.

ATIS	CASCADE APP CON	EUGENE TOWER ★	GND CON	CLNC DEL	UNICOM
<b>125.225</b>	<b>119.6 348.7</b>	<b>118.9</b> (CTAF) <b>371.9</b> (Rwy 16R/34L) <b>124.15 371.9</b> (Rwy 16L/34R)	<b>121.7 269.5</b>	<b>121.7 269.5</b>	<b>122.95</b>



NW-1, 07 FEB 2013 to 07 MAR 2013

NW-1, 07 FEB 2013 to 07 MAR 2013



4000	JILUM	tr 253°	WOLAV	tr 164°	VAUGN	ZIMKE	1800
↑	◆		◆		△		

See Planview for multiple IF locations.

GP 3.00°  
TCH 53

CATEGORY	A	B	C	D
RNP 0.30 DA		832-1½	466 (500-1½)	

## AUTHORIZATION REQUIRED