

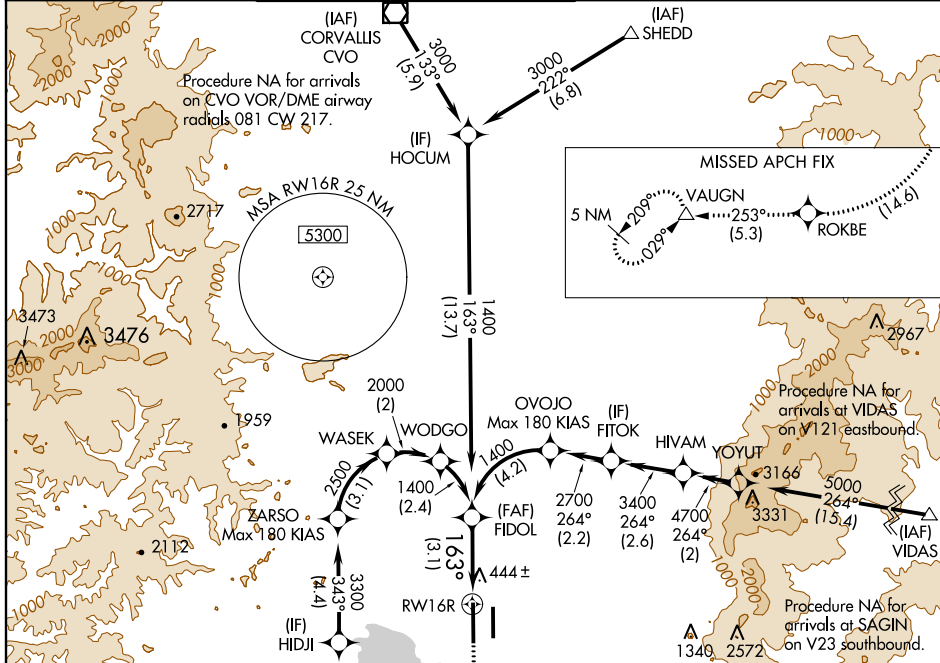
APP CRS 163°	Rwy Idg THRE	8009
	Apt Elev 374	

RNAV (RNP) Z RWY 16R

EUGENE/MAHLON SWEET FIELD (EUG)

ALSF-2 MISSED APPROACH: Climb to 5000 on track 163° to TIPIE, right turn to ROKBE, and on track 253° to VAUGHN and hold, continue climb-in-hold to 5000.

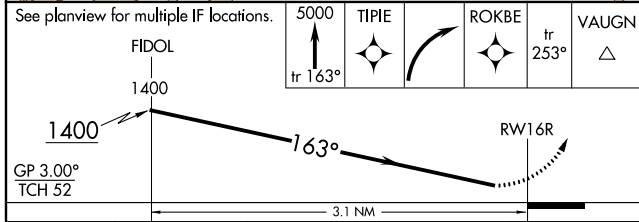
ATIS 125.225	CASCADE APP CON 119.6 348.7	EUGENE TOWER * 118.9 (CTAF) 371.9 (Rwy 16R/34L) 124.15 371.9 (Rwy 16L/34R)	GND CON 121.7 269.5	CLNC DEL 121.7 269.5	UNICOM 122.95
------------------------	---------------------------------------	---	-------------------------------	--------------------------------	-------------------------



NW-1, 07 FEB 2013 to 07 MAR 2013

NW-1, 07 FEB 2013 to 07 MAR 2013

ELEV 374	D THRE 360
163° to RWY 16R	
891	191
808	051 X 0009
396	425
410	34R
34L	
TDZ/CL Rwy 16R REIL Rwy 34R	
HIRL Rwys 16L-34R and Rwy 16R-34L	



CATEGORY	A	B	C	D
RNP 0.17 DA		647/40	287 (300-¾)	
RNP 0.30 DA		768/45	408 (400-¾)	

AUTHORIZATION REQUIRED