

APP CRS <b>163°</b>	Rwy Idg <b>THRE</b>	<b>6000</b>
	Apt Elev <b>374</b>	

# RNAV (RNP) Z RWY 16L

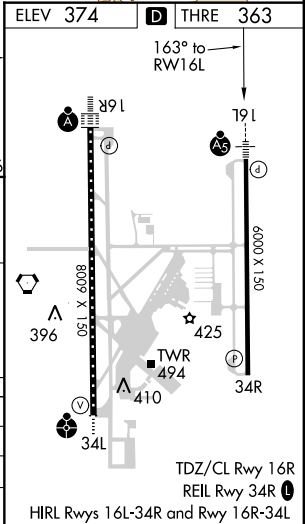
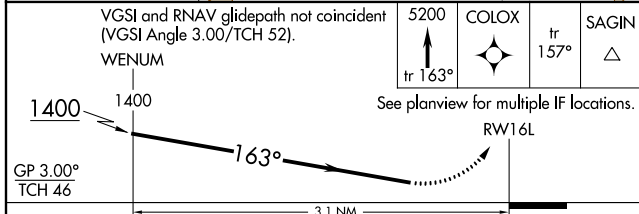
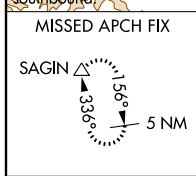
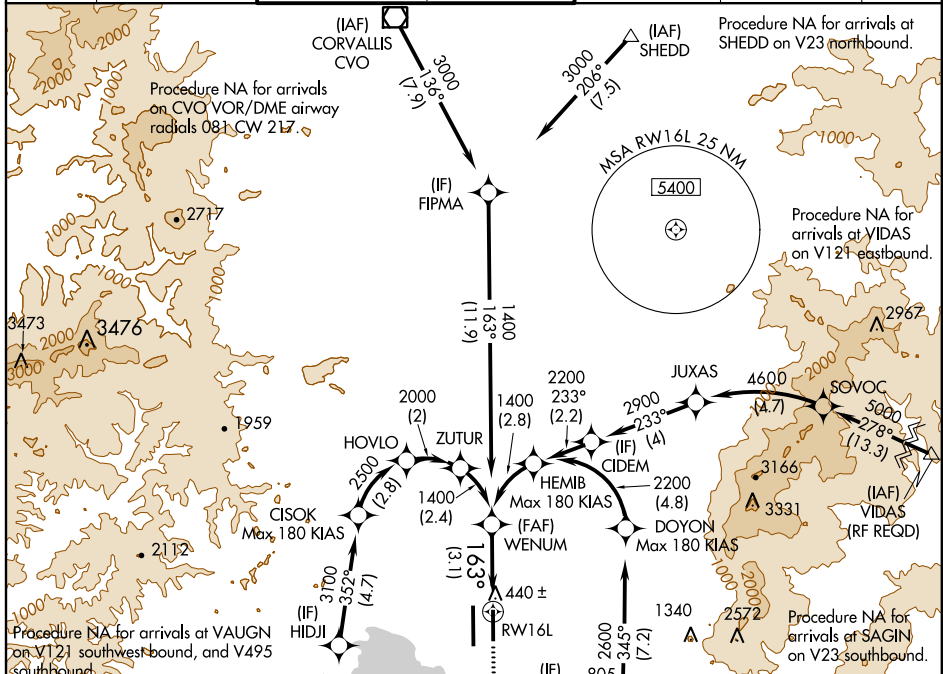
EUGENE/MAHLON SWEET FIELD (EUG)

▼ For uncompensated Baro-VNAV systems, procedure NA below -9°C (15°F) or above 47°C (116°F). GPS required. For inoperative MALSR, increase RNP 0.10 visibility to 1 mile, all Cats; and increase RNP 0.30 visibility to 1 1/8 miles, all Cats.

**MALSR**  
AS

MISSED APPROACH: Climb to 5200 on track 163° to COLOX, and on track 157° to SAGIN and hold, continue climb-in-hold to 5200.

ATIS <b>125.225</b>	CASCADE APP CON <b>119.6 348.7</b>	EUGENE TOWER * <b>118.9</b> (CTAF) <b>371.9</b> (Rwy 16R/34L) <b>124.15 371.9</b> (Rwy 16L/34R)	GND CON <b>121.7 269.5</b>	CLNC DEL <b>121.7 269.5</b>	UNICOM <b>122.95</b>
------------------------	---------------------------------------	---	-------------------------------	--------------------------------	-------------------------



CATEGORY	A	B	C	D
RNP 0.10 DA		669-3/4	306 (300-3/4)	
RNP 0.30 DA		719-3/4	356 (400-3/4)	

## AUTHORIZATION REQUIRED

NW-1, 07 FEB 2013 to 07 MAR 2013