

LOC/DME I-ADE <b>111.75</b> Chan 54 (Y)	APP CRS <b>163°</b>	Rwy Idg TDZE Apt Elev	<b>6000</b> <b>369</b> <b>374</b>
---	------------------------	-----------------------------	---

# ILS or LOC/DME RWY 16L

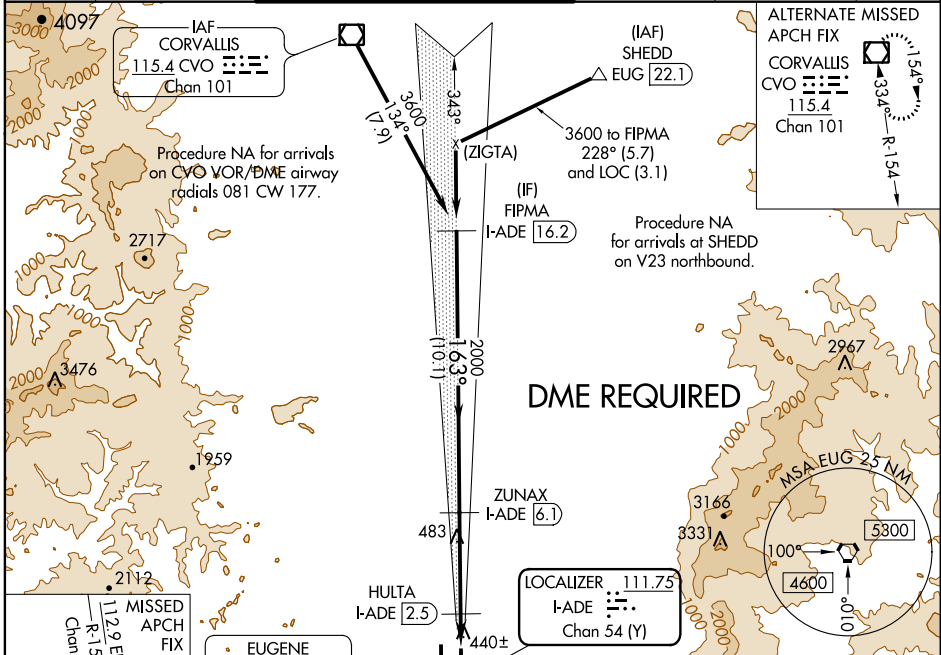
EUGENE/MAHLON SWEET FIELD (EUG)

**▼** For inoperative MALSR, increase S-LOC 16L Cat D visibility to 1 mile.  
**▲** DME required.

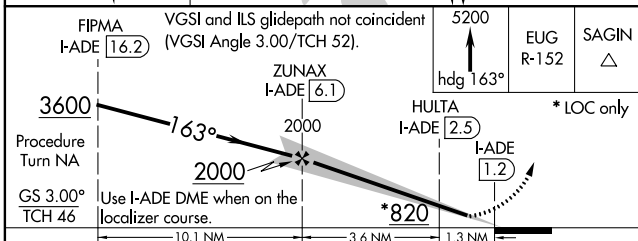
**MALSR**

**MISSED APPROACH:** Climb to 5200 on heading 163° and EUG VORTAC R-152 to SAGIN/EUG 16 DME and hold, continue climb-in-hold to 5200.

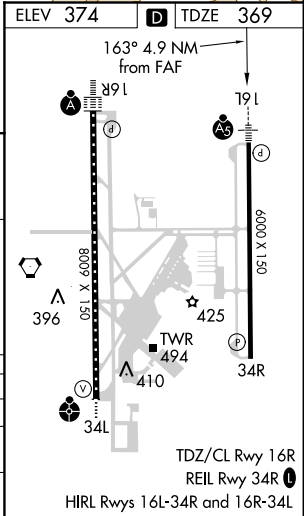
ATIS <b>125.225</b>	CASCADE APP CON <b>119.6 348.7</b>	EUGENE TOWER * <b>118.9</b> (CTAF) <b>371.9</b> (Rwy 16R/34L) <b>124.15 371.9</b> (Rwy 16L/34R)	GND CON <b>121.7 269.5</b>	CLNC DEL <b>121.7 269.5</b>	UNICOM <b>122.95</b>
------------------------	---------------------------------------	---	-------------------------------	--------------------------------	-------------------------



FIPMA I-ADE <b>16.2</b>	ZUNAX I-ADE <b>6.1</b>	HULTA I-ADE <b>2.5</b>	LOCALIZER <b>111.75</b> I-ADE Chan 54 (Y)
-------------------------	------------------------	------------------------	---



CATEGORY	A	B	C	D
S-ILS 16L	569-1/2		200 (200-1/2)	
S-LOC 16L	700-1/2	331 (400-1/2)		700-3/4 331 (400-3/4)
CIRCLING	800-1 426 (500-1)	840-1 466 (500-1)	840-1 1/2 466 (500-1 1/2)	940-2 566 (600-2)



NW-1, 07 FEB 2013 to 07 MAR 2013

NW-1, 07 FEB 2013 to 07 MAR 2013