

RNAV (GPS) RWY 6

ERIE INTL/TOM RIDGE FIELD (ERI)

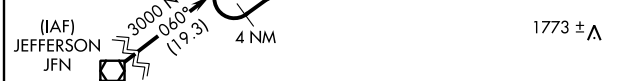
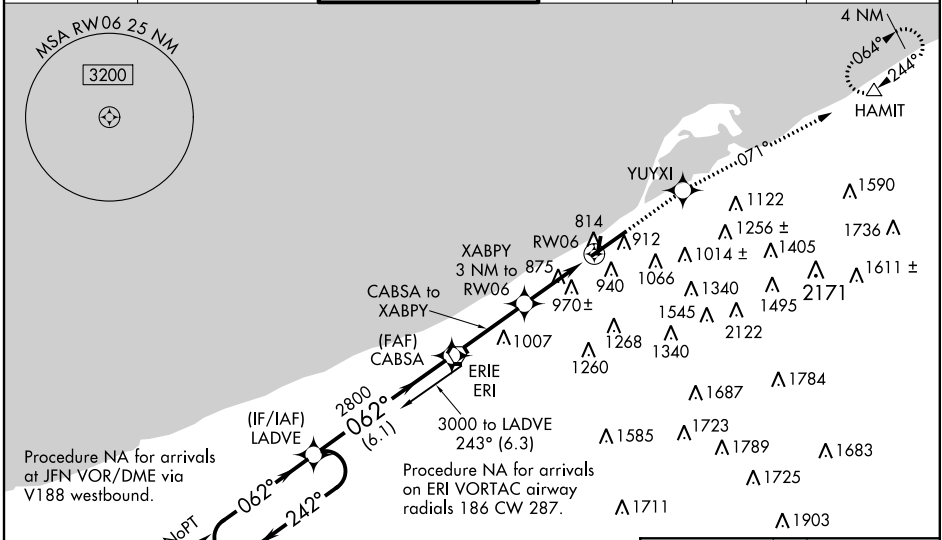
WAAS CH 77612 W06A	APP CRS 062°	Rwy Idg TDZE 733 Apt Elev 733
--	------------------------	---

⚠ Circling to Rwy 20 NA at night. Inoperative table does not apply to LPV all Cats. For inoperative MALSR, increase LNAV Cats A/B visibility to RVR 5000. For uncompensated Baro-VNAV systems, LNAV/VNAV NA below -16°C (4°F) or above 47°C (116°F). DME/DME RNP-0, 3 NA. Visibility reduction by helicopters NA. When local altimeter setting not received, use Ashtabula, OH altimeter setting and increase all DA/MDA 100 feet and LNAV/VNAV all Cats visibility 1 mile, LNAV Cat C and Circling Cat C visibilities ¼ mile, LNAV Cat D and Circling Cat D visibilities ½ mile. When using Ashtabula altimeter setting: inoperative table does not apply to LNAV/VNAV; for inoperative MALSR, increase LPV all Cats visibility to RVR 6000 and LNAV Cats A/B visibility to RVR 5000. Baro-VNAV and VDP NA when using Ashtabula altimeter setting.

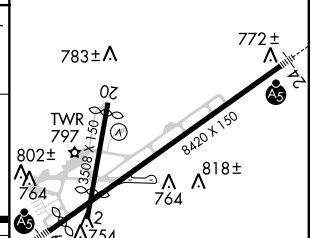
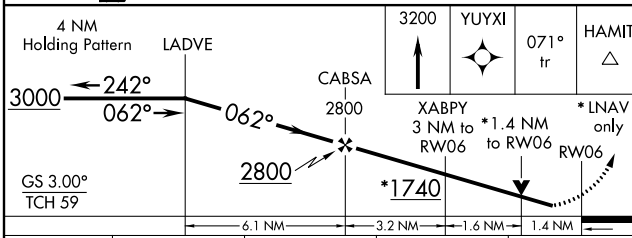
MALSR

MISSED APPROACH:
Climb to 3200 direct YUYXI and via 071° track to HAMIT and hold.

ATIS 120.35	ERIE APP CON ★ 121.0 257.8	ERIE TOWER ★ 118.1 (CTAF) 0 257.8	GND CON 121.9	CLNC DEL 126.8	UNICOM 122.95
-----------------------	--------------------------------------	---	-------------------------	--------------------------	-------------------------



ELEV 733	D TDZE 733
----------	-------------------



CATEGORY	A	B	C	D
LPV DA	983/40		250 (300-¾)	
LNAV/VNAV DA	1274/60		541 (600-1¼)	
LNAV MDA	1240/40 507 (600-¾)		1240/50 507 (600-1)	
CIRCLING	1340-1 607 (700-1)		1340-1¼ 607 (700-1¾) 1380-2 647 (700-2)	

HIRL Rwy 6-24 **⦿**
MIRL Rwy 2-20

NE-4, 07 FEB 2013 to 07 MAR 2013

NE-4, 07 FEB 2013 to 07 MAR 2013