


RNAV (GPS) RWY 24

ERIE INTL/TOM RIDGE FIELD (ERI)

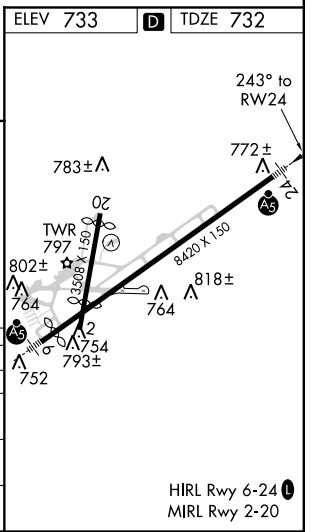
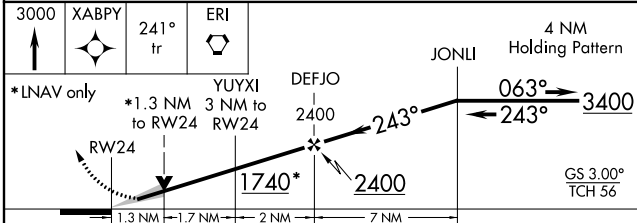
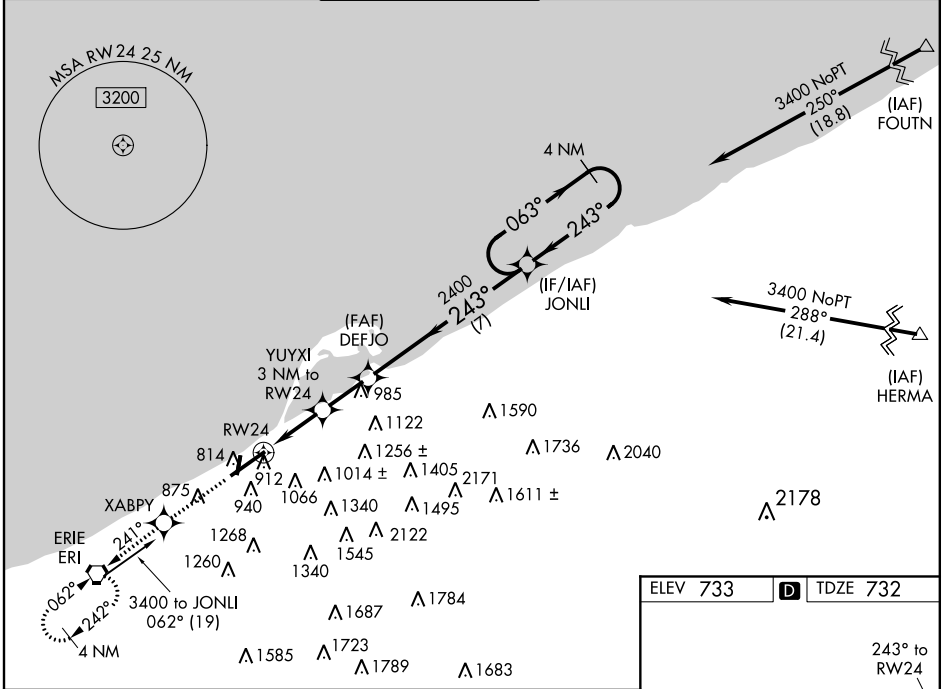
WAAS CH 86812 W24A	APP CRS 243°	Rwy Idg 7500 TDZE 732 Apt Elev 733
--	------------------------	---

⚠ Circling to Rwy 20 NA at night. For uncompensated Baro-VNAV systems, LNAV/VNAV NA below -16°C (4°F) or above 47°C (116°F). DME/DME RNP-0.3 NA. When local altimeter setting not received, use Ashtabula, OH altimeter setting and increase all DA/MDA 100 feet and LNAV/VNAV all Cats., LNAV Cats. C/D, and Circling Cat. C visibilities ¼ mile and Circling Cat. D visibility ½ mile. For inoperative MALSRS when using Ashtabula altimeter setting, increase LPV all Cats visibility to 1 mile. Baro-VNAV and VDP NA when using Ashtabula altimeter setting.

MALSRS


MISSED APPROACH:
Climb to 3000 direct XABPY and via 241° track to ERI VORTAC and hold, continue climb-in-hold to 3000.

ATIS 120.35	ERIE APP CON ★ 121.0 257.8	ERIE TOWER ★ 118.1 (CTAF) 257.8	GND CON 121.9	CLNC DEL 126.8	UNICOM 122.95
-----------------------	--------------------------------------	---	-------------------------	--------------------------	-------------------------



CATEGORY	A	B	C	D
LPV DA		935-½	203 (300-½)	
LNAV/VNAV DA		1207-1¼	475 (500-1¼)	
LNAV MDA	1200-½ 468 (500-½)		1200-¾ 468 (500-¾)	1200-1 468 (500-1)
CIRCLING	1340-1 607 (700-1)		1340-1¾ 607 (700-1¾)	1380-2 647 (700-2)

NE-4, 07 FEB 2013 to 07 MAR 2013

NE-4, 07 FEB 2013 to 07 MAR 2013

HIRL Rwy 6-24
MIRL Rwy 2-20